

# MGL CHAPTER 149 FSB PRESENTATION: Details, Details.

18 OCTOBER 2018

## Common Installations

- Mixed but parallel shared responsibilities.
- All must work together.
- Commissioning helps tie things together.

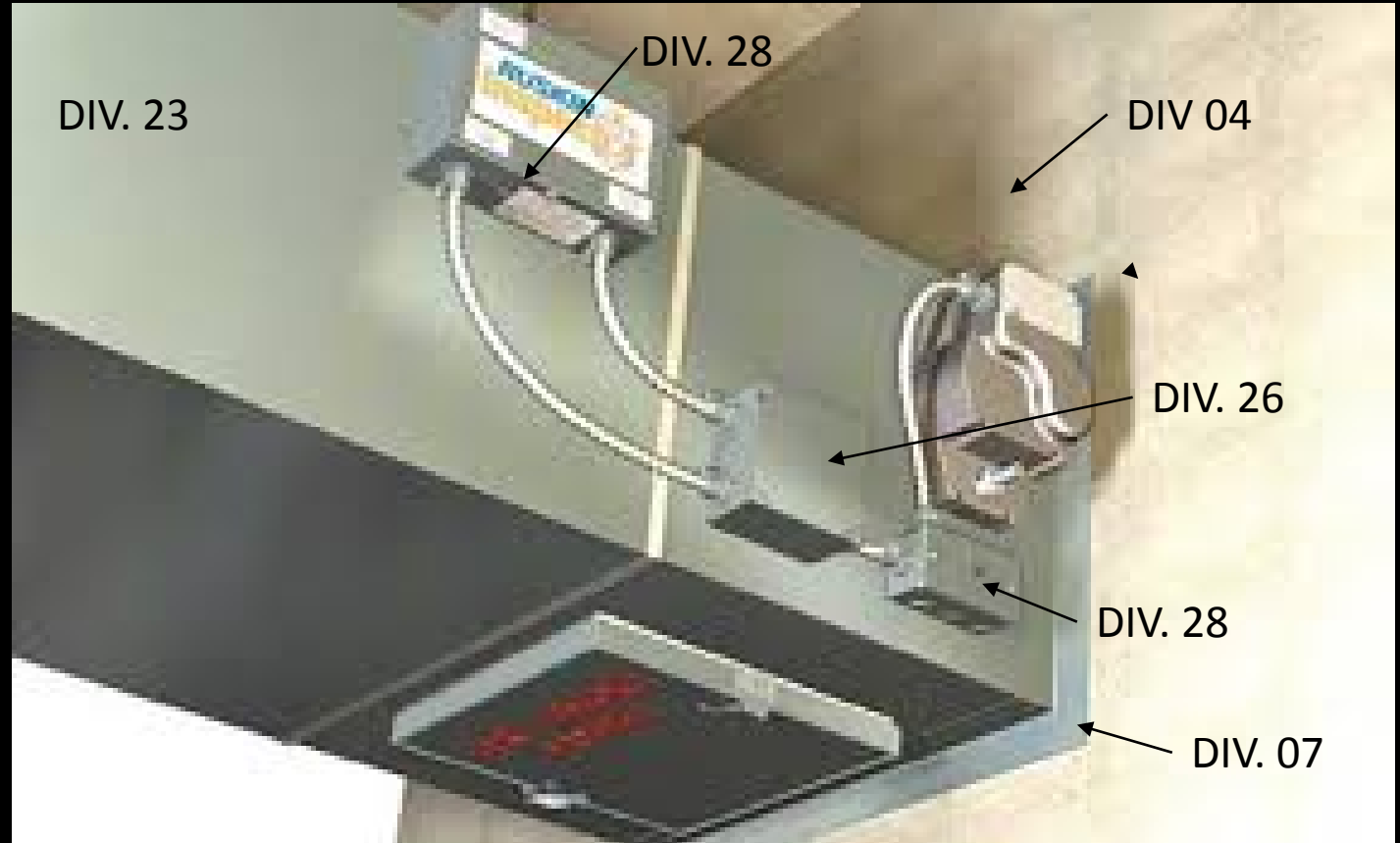


# MGL CHAPTER 149 FSB PRESENTATION: Details, Details.

18 OCTOBER 2018

## Common Installations

- Mixed but parallel shared responsibilities.
- All must work together.
- Commissioning helps tie things together.



# MGL CHAPTER 149 FSB PRESENTATION: Details, Details.

18 OCTOBER 2018

## Common Installations

- Mixed but parallel shared responsibilities.
- All must work together.
- Commissioning helps tie things together.



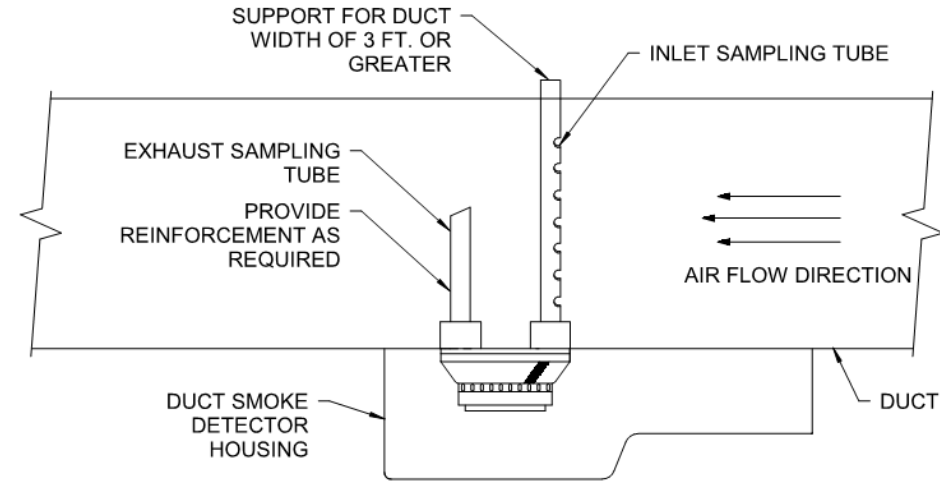
MGL CHAPTER 149 FSB  
 PRESENTATION: Details, Details.  
 18 OCTOBER 2018

INTER-TRADE SCOPE COORDINATION MATRIX

Pursuant to MGL Ch. 149	ACTION BY DIVISION/SECTION NOTED								
	FURNISHED	INSTALLED	WIRING & RACEWAY					BMS TO NETWORK	OTHER
			LV POWER 0-100 VAC	MV POWER OVER 100VAC	CONTROL WIRING	FAS WIRING			
ITEM OF WORK									
DUCT SMOKE DETECTORS (DD)	28	23-SM	26	26	23-ATC	28	27		
DD REMOTE TEST/INDICATORS	28	28	26	26					
DUCT SMOKE DAMPERS (SD)	23	23	26	26	23-ATC	28			
SD REMOTE TEST INDICATORS	23	26	26	26					
FLOOR-MOUNTED EQUIPMENT	TRADE	TRADE							
CONCRETE PADS	03	03							
INERTIA BASE CONC. FILL	03	03							
AIR HANDLING EQUIP. (ALL)	23	23		26					
CONTROLS INSTRUMENTATION	23-ATC	23-ATC		26	23-ATC				
HVAC EQUIPMENT	23	23		26	23-ATC				
CONTROL VALVES	23-ATC	23							
CONTROL VALVE ACTUATORS	23-ATC	23-ATC	23-ATC	23-ATC	23-ATC				
ROOF FANS	23	23		26					
ROOF CURBS (ALL)	23	07							
ROOF CURB FLASHING	07	07							
CURB COUNTER-FLASHING	23	23							
ROOF FAN DAMPER MOTORS	23	23							
ROOF FAN DAMPER MOTORS	23	23							
FAN STARTER OR VFD	23	26							
CONTROLS TRANSFORMER	23-ATC	23-ATC	23-ATC	26					

# MGL CHAPTER 149 FSB PRESENTATION: Details, Details.

18 OCTOBER 2018



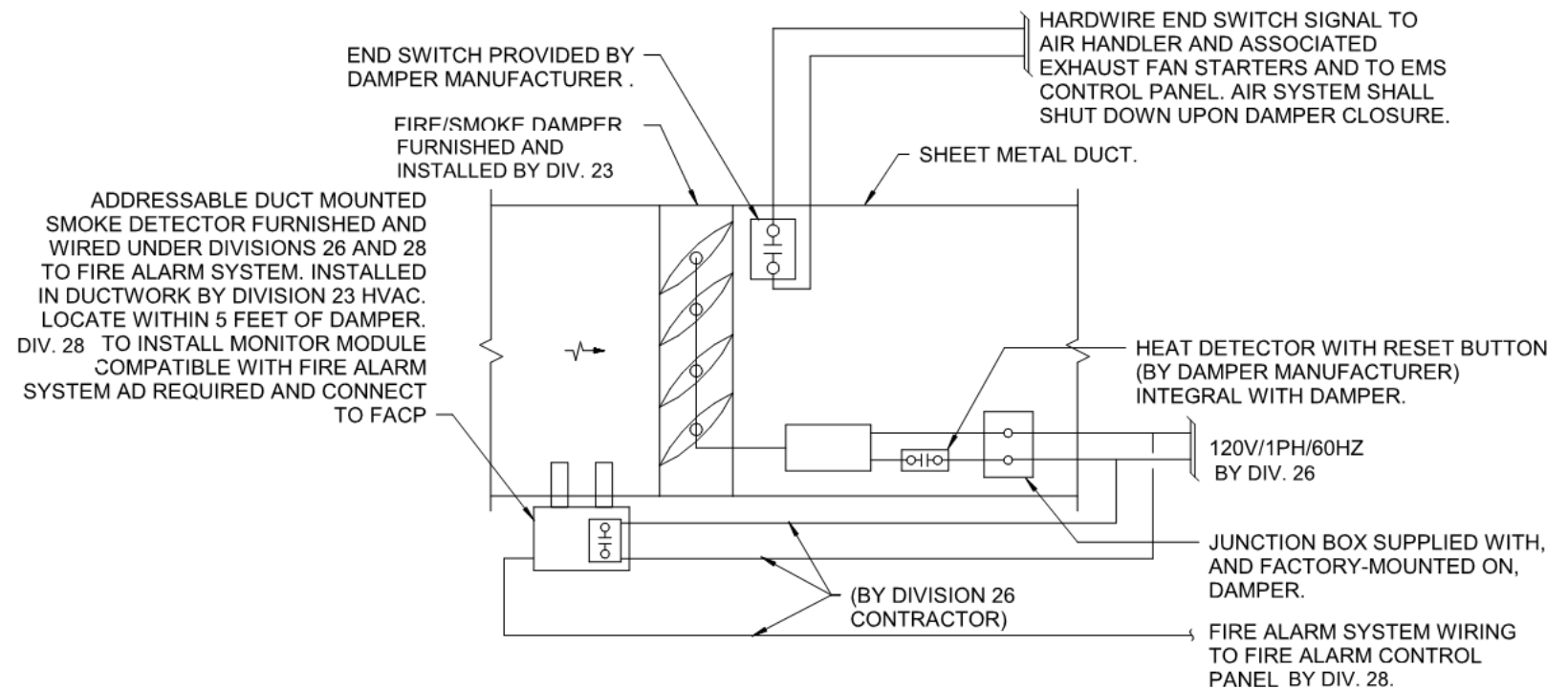
#### NOTES:

1. NEW DUCT SMOKE DETECTORS AS INDICATED ON THE FIRE ALARM DRAWINGS SHALL BE FURNISHED UNDER DIVISION 28. INSTALLATION IN DUCTS INCLUDING SAMPLING TUBES SHALL BE UNDER DIVISION 23. THE DIVISION SUBCONTRACTOR SHALL CONNECT NEW DEVICES TO THE ADDRESSABLE CIRCUIT SERVING THE FLOOR AND PROVIDE EXTERNAL 24VDC POWER AS REQUIRED. ALL FAN UNITS SHALL BE WIRED FOR FAN SHUT-DOWN. COORDINATE WITH THE FIRE ALARM CONTRACTORS.
2. THE DIVISION 26 CONTRACTOR SHALL PROVIDE WIRING, CONDUIT, RELAYS AND REMOTE LED/TEST SWITCH
3. ALL DUCT DETECTORS SHALL BE SUPPLIED WITH REMOTE LED/TEST SWITCH MODULES TO BE INSTALLED AND WIRED BY THE DIVISION 26 CONTRACTOR. COORDINATE THE LOCATION OF THESE MODULES WITH THE OWNER.

⑧ DUCT SMOKE DETECTOR DETAIL  
NOT TO SCALE

# MGL CHAPTER 149 FSB PRESENTATION: Details, Details.

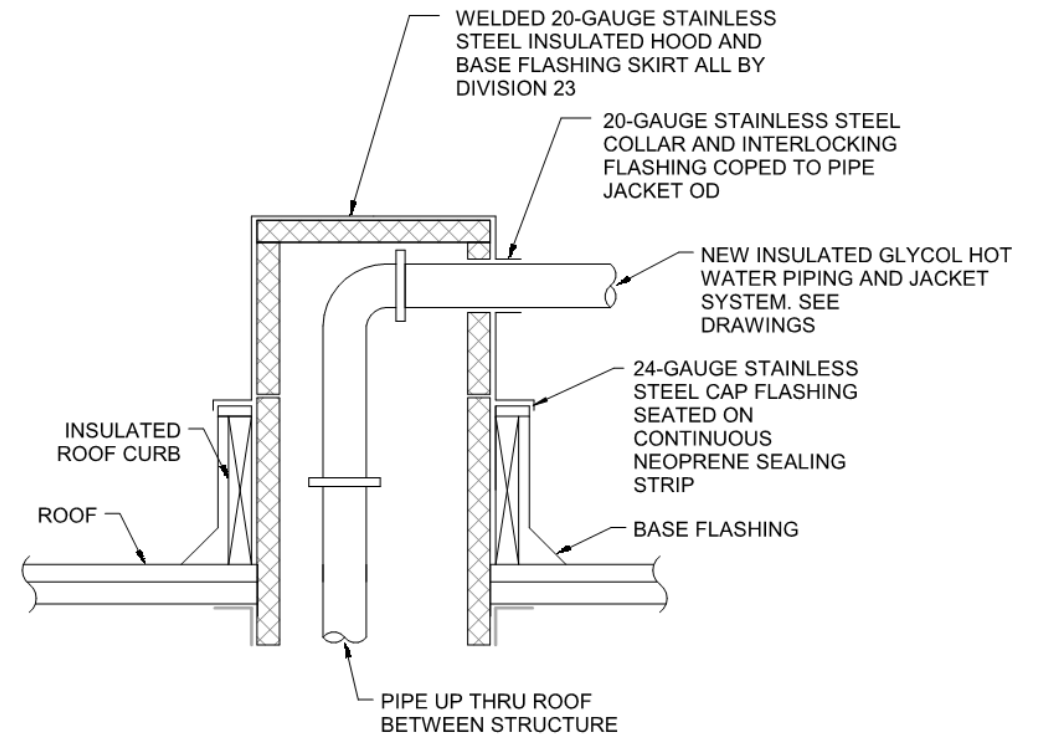
18 OCTOBER 2018



⑤ COMBINATION FIRE-SMOKE DAMPER COORDINATION DETAIL  
NOT TO SCALE

# MGL CHAPTER 149 FSB PRESENTATION: Details, Details.

18 OCTOBER 2018



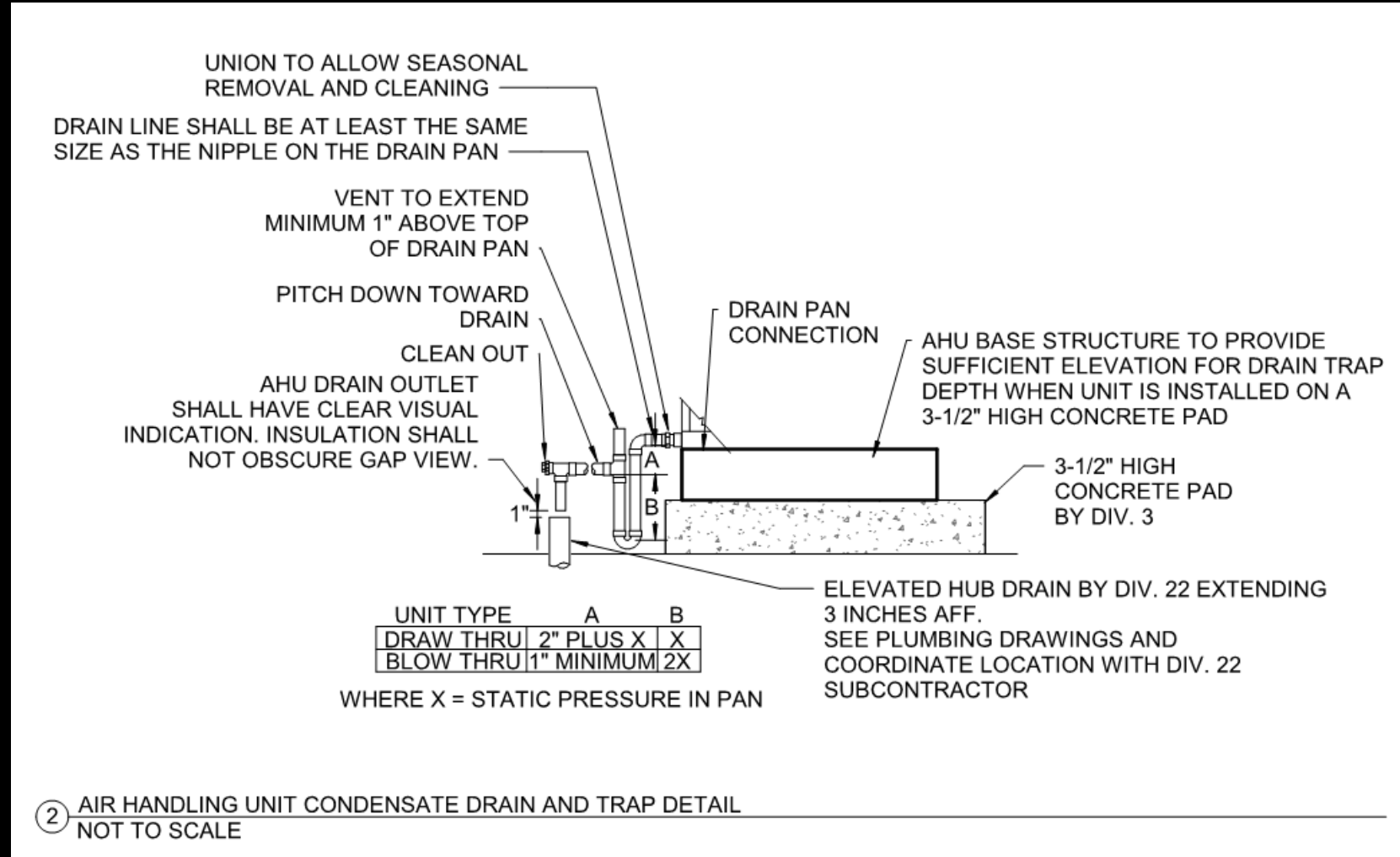
#### NOTES:

1. SLOPE SERVICES AWAY FROM HOOD.
2. FURNISH CURB TO CMR FOR INSTALLATION. TOP PLENUM AND COUNTER-FLASHING OF BOX BY DIVISION 23 CONTRACTOR.

⑦ ROOF PIPE PENETRATION  
NOT TO SCALE

# MGL CHAPTER 149 FSB PRESENTATION: Details, Details.

18 OCTOBER 2018



② AIR HANDLING UNIT CONDENSATE DRAIN AND TRAP DETAIL  
NOT TO SCALE