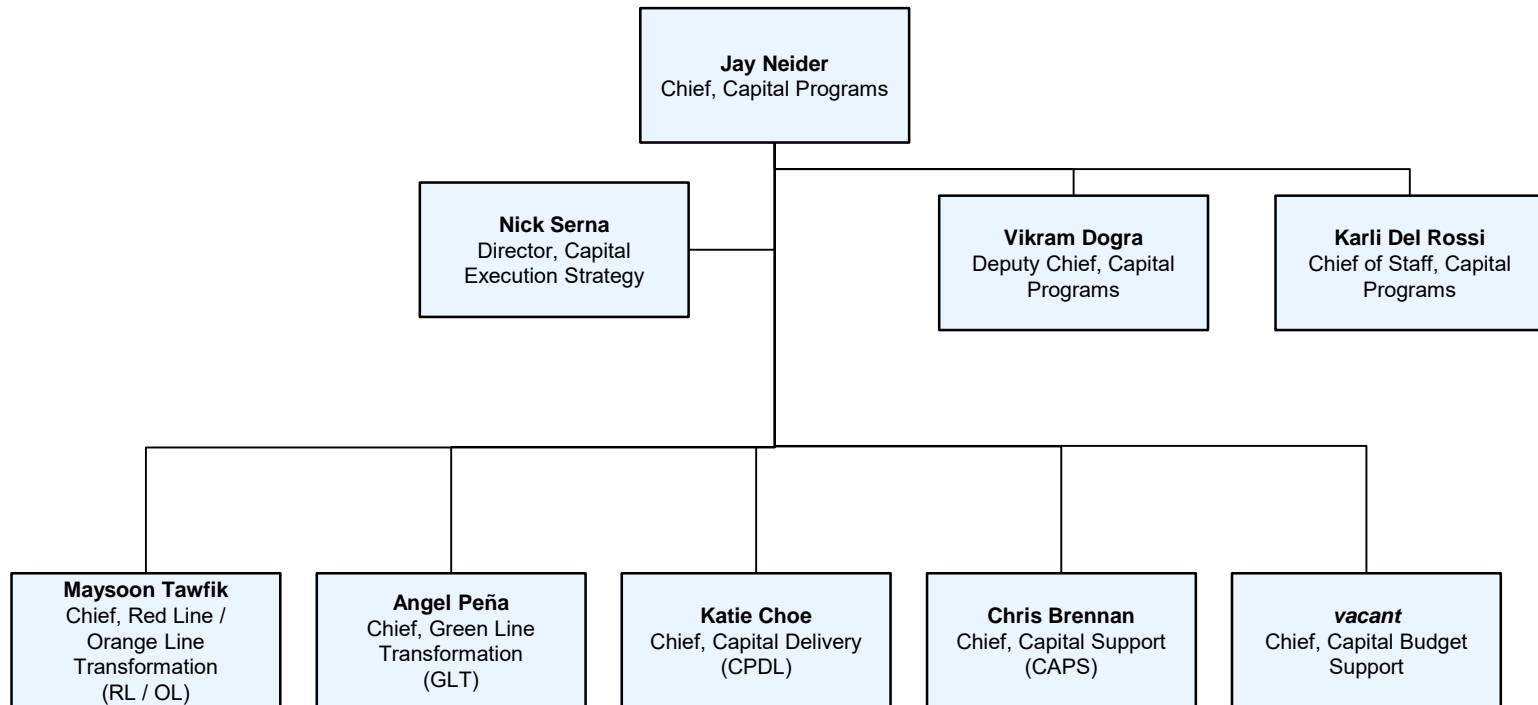
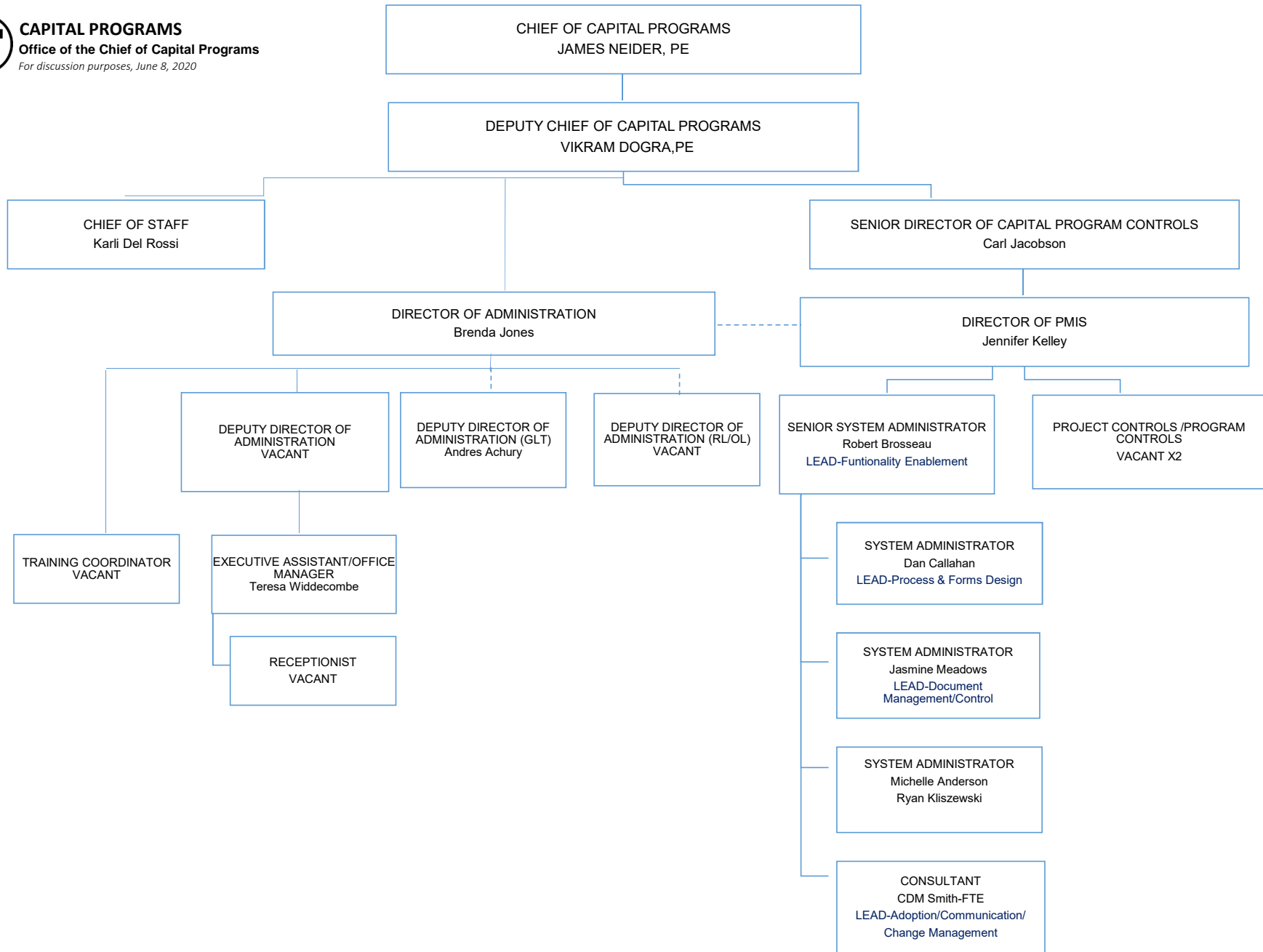


# Capital Programs Organizational Chart

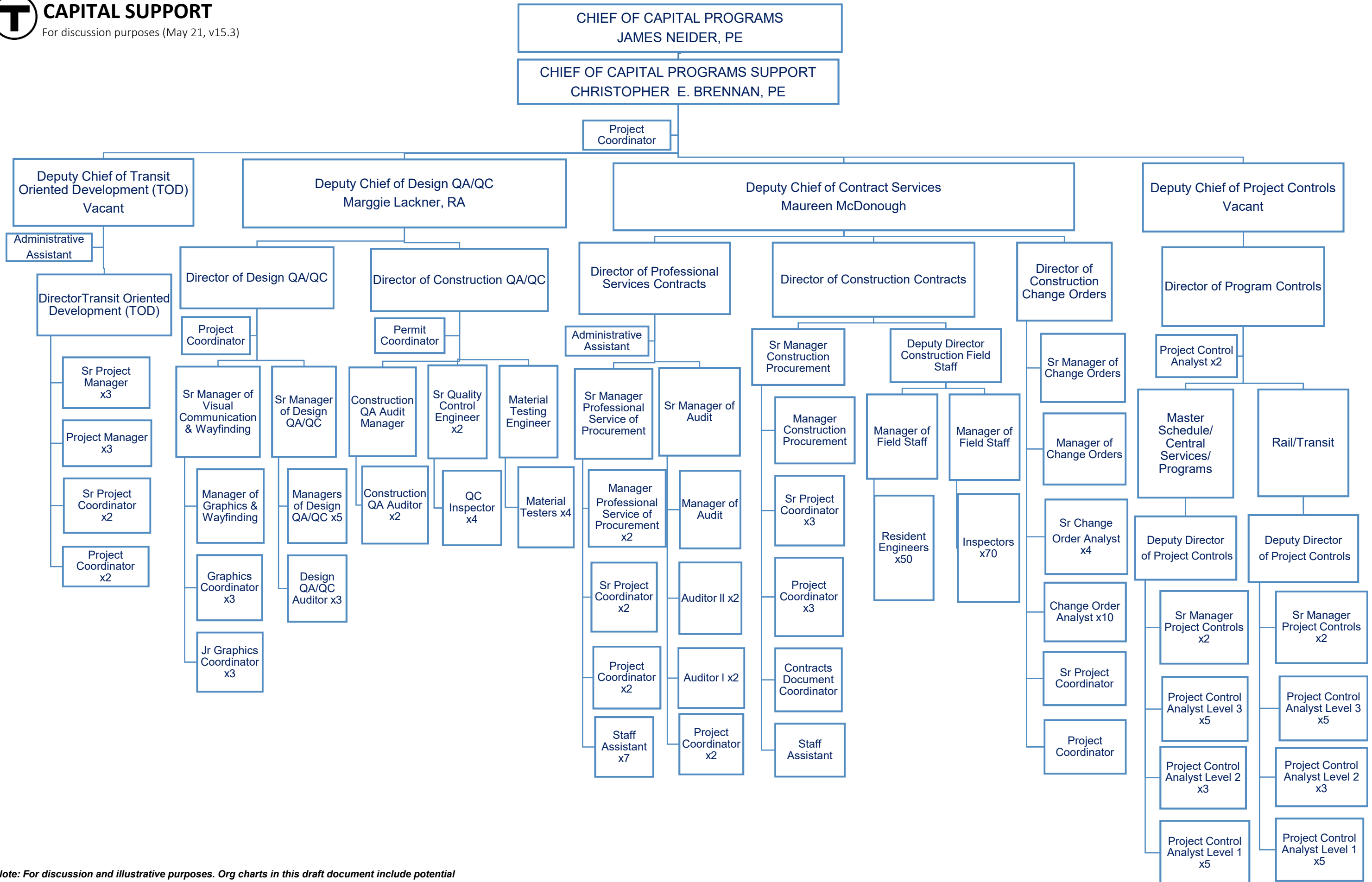
As of June 08, 2020



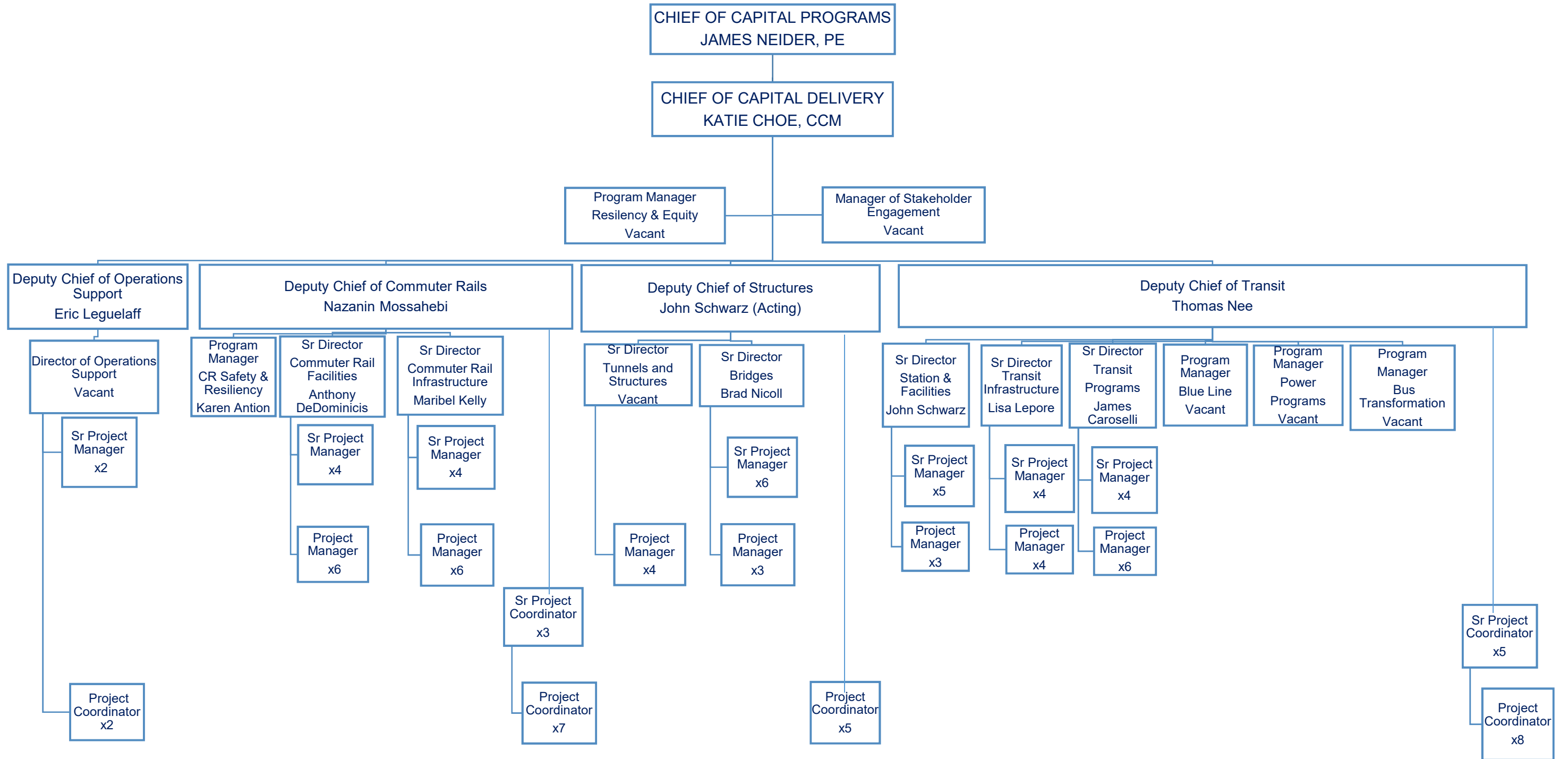
*Note: For discussion and illustrative purposes. Org charts in this draft document include potential future positions and are subject to change at the discretion of the Chief of Capital Programs*



**Note: For discussion and illustrative purposes. Org charts in this draft document include potential future positions and are subject to change at the discretion of the Chief of Capital Programs**



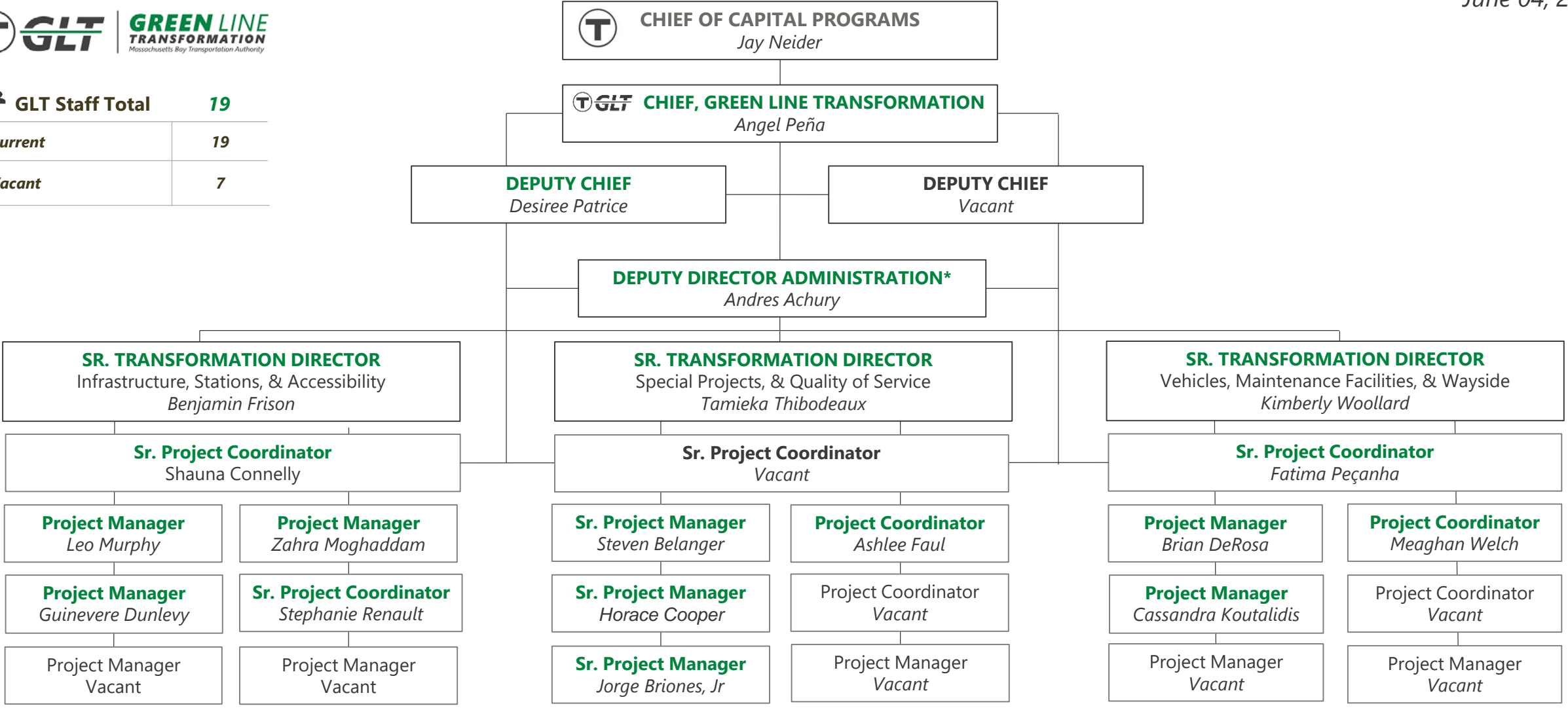
*Note: For discussion and illustrative purposes. Org charts in this draft document include potential future positions and are subject to change at the discretion of the Chief of Capital Programs*



*Note: For discussion and illustrative purposes. Org charts in this draft document include potential future positions and are subject to change at the discretion of the Chief of Capital Programs*



<b>GLT Staff Total</b>	<b>19</b>
<b>Current</b>	<b>19</b>
<b>Vacant</b>	<b>7</b>

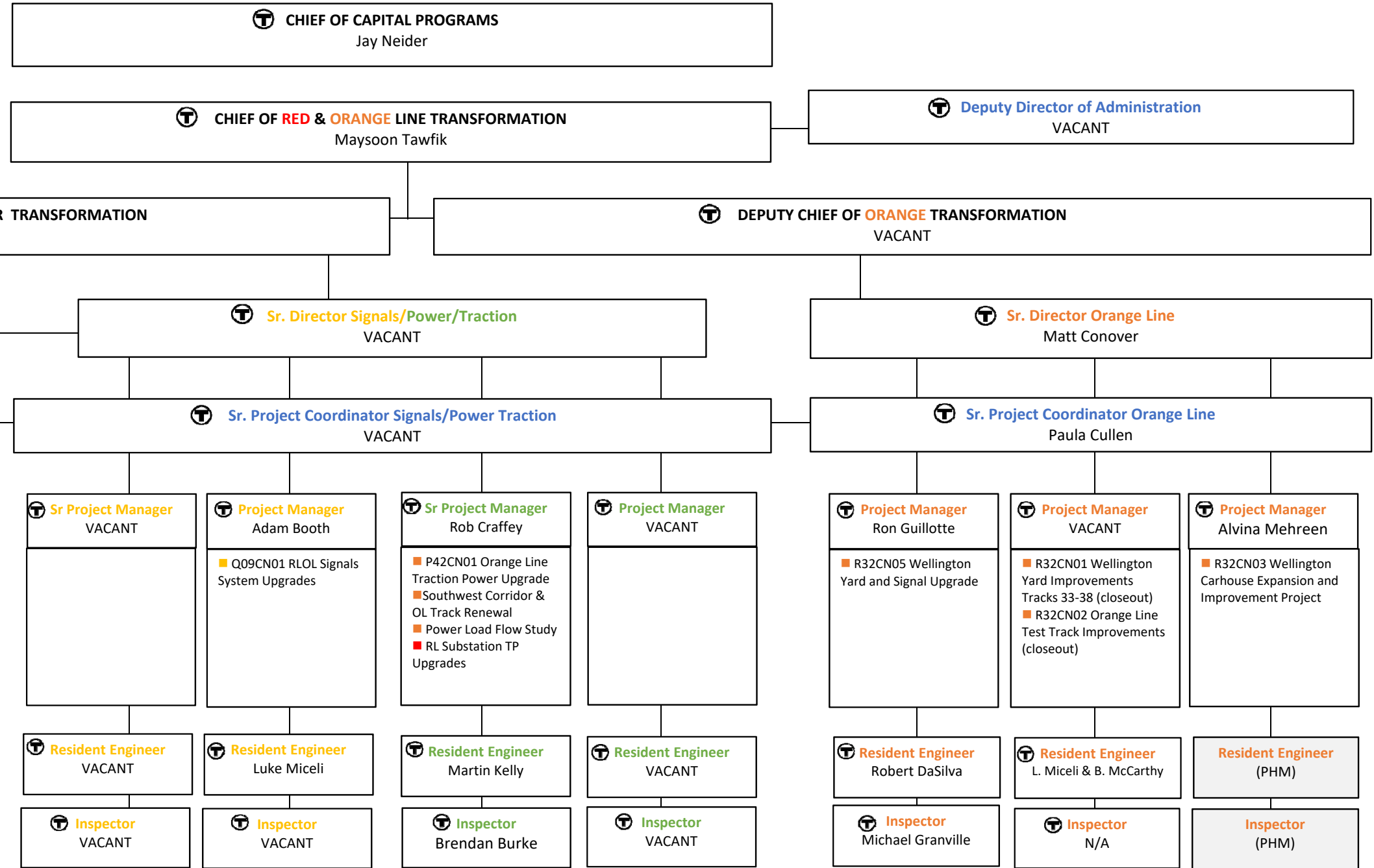


	<b>PROGRAM MANAGEMENT/CONSTRUCTION MANAGEMENT (PM/CM) SUPPORT</b>	<ul style="list-style-type: none"> <li>◦ Strategic Planning</li> <li>◦ Design Management</li> </ul>	<ul style="list-style-type: none"> <li>◦ Design Development &amp; Scoping</li> <li>◦ Construction Management</li> </ul>	<ul style="list-style-type: none"> <li>◦ Fiscal Management</li> <li>◦ Community Outreach</li> </ul>
--	---	---	---	---

Note: For discussion and illustrative purposes. Org charts in this draft document include potential future positions and are subject to change at the discretion of the Chief of Capital Programs

\* Deputy Director serve as a liaison between the GLT Delivery Team and the Chief of Staff of Capital Program

# T RED AND ORANGE LINE TRANSFORMATION PROGRAM



**PHM** PROGRAM MANAGEMENT/CONSTRUCTION MANAGEMENT (PM/CM) SUPPORT

■ Strategic Planning  
■ Design Build Management

■ Constructability & Claims  
■ Construction Management

■ Fiscal Management  
■ Community Outreach

■ Safety  
■ Quality

Owners Representative/State Oversight Team  
PMOC/FTA's Oversight Team

Version R12  
6/4/2020

*Note: For discussion and illustrative purposes. Org charts in this draft document include potential future positions and are subject to change at the discretion of the Chief of Capital Programs*