



**Boston Society of Civil Engineers Section**  
American Society of Civil Engineers



YOUNGER MEMBER GROUP

- 2016-2017  
Program Sponsors
- BETA Group, Inc.
- BSC Group
- Childs Engineering  
Corporation
- Dewberry
- Green International  
Affiliates, Inc.
- GZA  
GeoEnvironmental,  
Inc.
- Haley & Aldrich,  
Inc.
- Hayward Baker, Inc.
- Helical Drilling
- Howard Stein  
Hudson
- Hoyle, Tanner,  
& Associates
- Massachusetts  
Department of  
Transportation
- McMillen Jacobs  
Associates
- N.E. Bridge  
Contractors, Inc.
- Northeastern  
University
- Pare Corporation
- Skanska Civil
- Stantec
- TranSystems
- Tufts University
- Weston & Sampson  
Engineers, Inc.

## Results from a Living Building: The Bullitt Center

**Ron Rochon, FAIA**

*Partner, Miller Hull Partnership*

**Justin Stenkamp, PE, LEED AP**

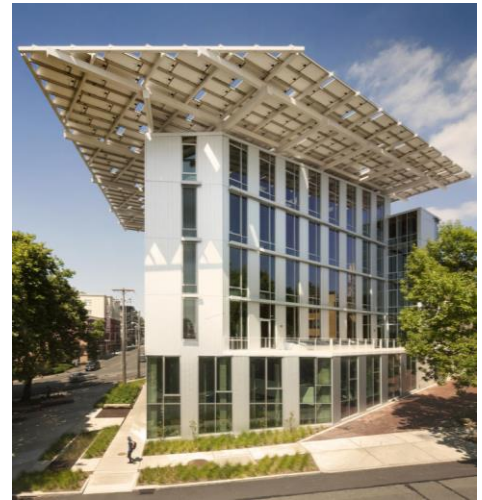
*Associate, PAE Consulting Engineers*

**Tuesday, March 28, 2017**

**Wentworth Institute of Technology**

**Watson Auditorium, 550 Huntington Ave, Boston, MA 02115**

**5:30 PM Social/Registration; 6:30 PM Dinner; 7:30 PM Presentation**



The Bullitt Center in Seattle, WA was designed to be the world's greenest commercial building, achieving status as a net-zero energy Living Building. Ron Rochon of Miller Hull, the building's architect, and Justin Stenkamp of PAE, the building's MEP engineer, will discuss the experience of working in a Living Building, lessons learned from the design and operation, and the building's performance relative to expectations. Their talk will provide a rare holistic view of building design from initial design decisions, through construction issues and changes, to final occupancy, as well as a summary of several innovative and sustainable engineering solutions used in the building.

**Registration Deadline: Tuesday, March 21, 2017**

**\$15 Student Members; \$20 Senior Members (65+)**

**\$35 BSCES Members & Public Sector Non-Members**

**\$30 Public Sector Members; \$40 Non-Members**

### Information/Registration:

Register to attend this meeting and pay by credit card online at [bit.ly/StudentNight2017](http://bit.ly/StudentNight2017). To register online for an event at the BSCES member rate you must login using your BSCES assigned username and password. If you do not know your BSCES member login information call 617/227-5551. You can also register for this event by mail or email. To do so, download and complete a [BSCES Event Registration Form](#) and follow the submission instructions. Cancellations received after March 21, 2017 and no-shows will be billed.



Supported by the staff of The Engineering Center Education Trust



**Boston Society of Civil Engineers Section**  
American Society of Civil Engineers



YOUNGER MEMBER GROUP

2016-2017  
Program Sponsors

BETA Group, Inc.

BSC Group

Childs Engineering  
Corporation

Dewberry

Green International  
Affiliates, Inc.

GZA  
GeoEnvironmental,  
Inc.

Haley & Aldrich,  
Inc.

Hayward Baker, Inc.

Helical Drilling

Howard Stein  
Hudson

Hoyle, Tanner,  
& Associates

Massachusetts  
Department of  
Transportation

McMillen Jacobs  
Associates

N.E. Bridge  
Contractors, Inc.

Northeastern  
University

Pare Corporation

Skanska Civil

Stantec

TranSystems

Tufts University

Weston & Sampson  
Engineers, Inc.

# 105<sup>th</sup> Annual BSCES Student Night

## Tuesday, March 28, 2017

### Watson Auditorium, 550 Huntington Ave, Boston, MA 02115

### 5:30 PM – 9:00 PM

Watson Auditorium (marked in red) is located off Parker St. Parking is available in the Parker Street Lot (marked in yellow). Public transit is recommended. The nearest T stop is the Museum of Fine Arts (green line, E branch), which is a 5 minute walk from the auditorium. The Ruggles stop (orange line) is a 5-10 minute walking distance. The 47 bus stops at the intersection of Ruggles and Huntington, which is also a 5 minute walk from the auditorium.



**Sponsored by the BSCES Student Affairs Committee,  
WIT ASCE Student Chapter, and  
Simpson Gumpertz & Heger Inc.**



**Student Affairs Committee**



**WENTWORTH**  
Institute of Technology

**SIMPSON GUMPERTZ & HEGER**

Engineering of Structures  
and Building Enclosures