



Innovation thru Green Infrastructure:

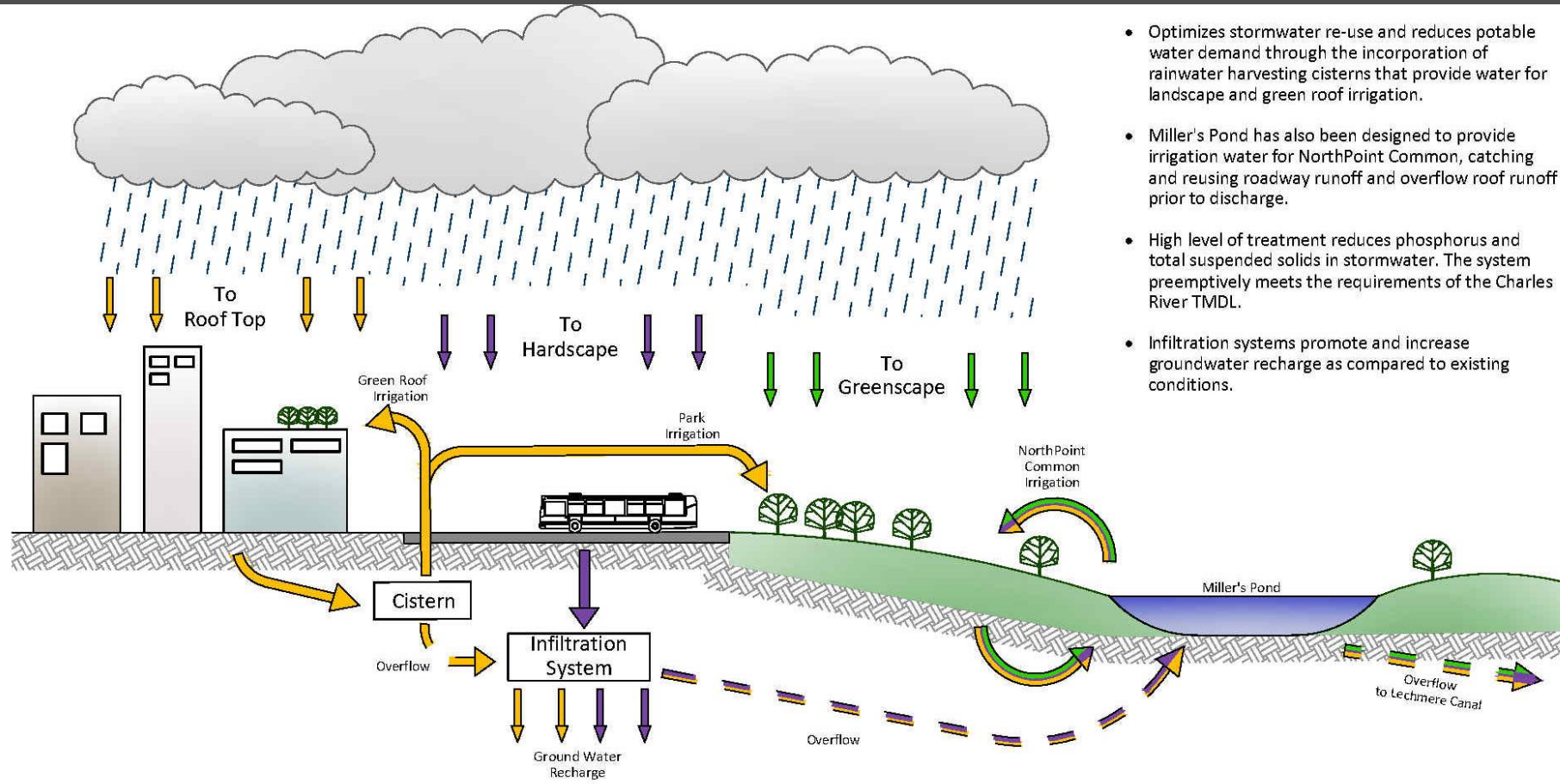
*Collaboration between
Landscape Architects and Civil Engineers*



ACEC/MA Private Sector Committee Meeting – December 16, 2020



- Located in Cambridge, Boston and Somerville
- 43 acres of former industrial site and rail yards
- 4.5 million square feet of commercial, retail and residential
- 11 acres of open space
- Landscape Architect: MVVA



- Optimizes stormwater re-use and reduces potable water demand through the incorporation of rainwater harvesting cisterns that provide water for landscape and green roof irrigation.
- Miller's Pond has also been designed to provide irrigation water for NorthPoint Common, catching and reusing roadway runoff and overflow roof runoff prior to discharge.
- High level of treatment reduces phosphorus and total suspended solids in stormwater. The system preemptively meets the requirements of the Charles River TMDL.
- Infiltration systems promote and increase groundwater recharge as compared to existing conditions.



The Common at Cx



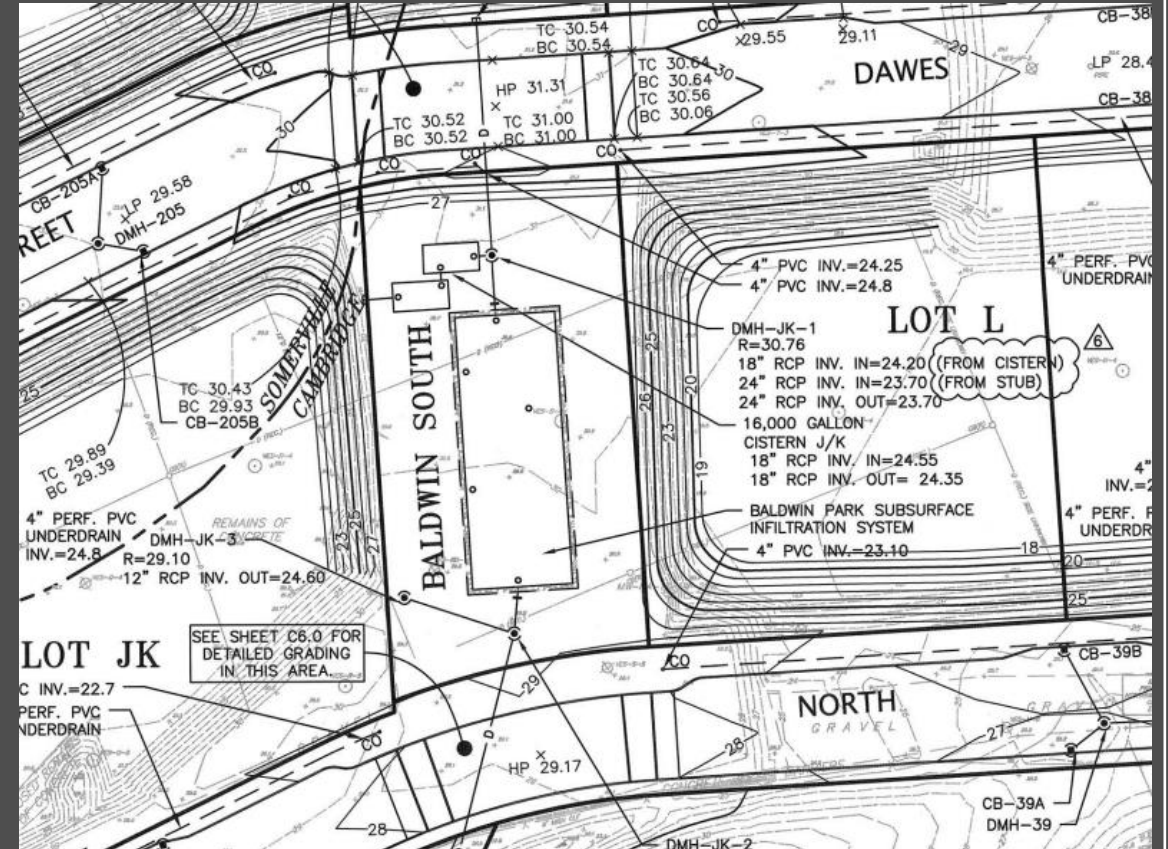
Stormwater management pond incorporated into the park system as a functional and aesthetic amenity.

Granite blocks from former sea walls were incorporated throughout the site as landscape elements.





Bioswales provide stormwater quality treatment of runoff from roadway and building areas.



Cisterns for the collection of rainwater from roof runoff for irrigation.



Installation of stormwater infiltration system within the open space network.



Use of pervious pavement to reduce impervious surfaces and promote infiltration.



Trench drains along edge of sidewalk provide water for planting strip along roadway.