



AMERICAN COUNCIL OF ENGINEERING COMPANIES
OF MASSACHUSETTS

The Voice of the Engineering, Land Surveying and Design Community

DBE Informational Meeting

June 2022



AMERICAN COUNCIL OF ENGINEERING COMPANIES
OF MASSACHUSETTS



AMERICAN COUNCIL OF ENGINEERING COMPANIES
OF MASSACHUSETTS

ACEC: The voice of America's engineering industry in Washington, DC.

ACEC/MA: The voice of the Massachusetts engineering, land surveying and design industry.

ACEC/MA is one of the 52 state and regional councils, called [Member Organizations](#), which provide additional benefits at the local level. Dues vary with the size of your firm and with each Member Organization.



AMERICAN COUNCIL OF ENGINEERING COMPANIES
OF MASSACHUSETTS

DBE Informational Meeting

Why We Are Here Today

MBTA DBE Program

Typical Contracting Vehicles

Typical Services

Panelists

Q/A

Contact Information

Next Steps



**Massachusetts Bay
Transportation Authority**

ACEC

AMERICAN COUNCIL OF ENGINEERING COMPANIES
OF MASSACHUSETTS

MBTA DBE Program

MBTA Disadvantaged Business Enterprise (DBE)

[WWW.Disadvantaged Business Enterprise \(DBE\)
Program | Business | MBTA](http://WWW.Disadvantaged Business Enterprise (DBE) Program | Business | MBTA)

MBTA Bids and Solicitations

<https://www.mbta.com/business/bids-solicitations>

MassDOT Office of Diversity and Civil Rights (ODCR)

[WWW.MassDOT Office of Diversity and Civil Rights
External Operations](http://WWW.MassDOT Office of Diversity and Civil Rights External Operations)

Typical Contracting Vehicles

General Engineering Consultant (GEC)

Program Specific

Project Specific



Downtown Crossing Station
Accessibility Improvements



GLX Union Station construction

Typical Services

- * Acoustics Design
- * Air Quality
- * Architecture
- * Audio Visual Support
- * Asset Management
- * Bridge Design/Rating
- * Bridge Inspection
- * BIM Modeling
- * Branding
- * Building Conditions Assessment
- * Building Envelope Design
- * Building Forensic
- * Bus Operations Support
- * CADD Services



North Station Draw 1 Bridge Replacement

Typical Services

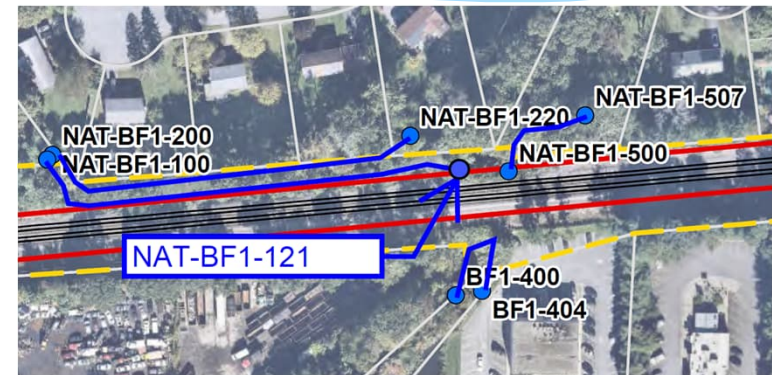
- * Civil Engineering
- * Civil & Environmental Engineering (water/waste water/ stormwater)
- * Claims Management (Change Order Negotiations)
- * Code Compliance – Accessibility
- * Code Compliance - Fire Protection
- * Community/Public Outreach
- * Constructability
- * Construction Change Order Negotiations
- * Construction Contract Assistance
- * Construction Inspections & Testing
- * Construction Oversight
- * Construction Surveillance Recording
- * Cultural Resources
- * Economic Development, Best Use



MBTA SCR Fall River Depot Construction

Typical Services

- * eBuilder/PM Web Support
- * Electrical Engineering
- * Emergency Management
- * Environmental Consulting
- * Environmental Permitting
- * Environmental Testing (Laboratory)
- * Facility Operations
- * Field Quality Control
- * Fire Protection Engineering
- * Flagging - Roadway/Construction Site
- * Geotechnical Engineering Including Soils and Foundation Studies
- * Geotechnical/Environmental Borings (Drillers)
- * Geotechnical Testing
- * GIS Services



WTT Wetland Delineations

Typical Services

- * Graphic Design
- * Historical Assessment/ Preservation
- * Hydraulics and Hydrology
- * Independent Cost Estimating/Review
- * Industrial Engineering
- * Intelligent Transportation Systems
- * Interior Design
- * Interpreters/Translation (all languages including sign)
- * Land Survey/Bathymetric Survey/LiDAR
- * Landscape Architecture
- * LEAN Facilitation
- * Low Voltage Engineering
- * Materials Inspection and Testing
- * Mechanical Engineering



MBTA RLT Crew inspecting signal equipment

Typical Services

- * Moveable Bridge Design/Rating
- * Moveable Bridge Inspection
- * Municipal Liaison
- * NBIS Bridge Inspection
- * Noise and Vibration Study
- * Parking Garage Planning and/or Design
- * Regulatory Permitting
- * Photogrammetry
- * Planning
- * Plumbing Engineering
- * PMIS Support
- * Power: Traction, Catenary, and Transmission
- * Projects Controls: Cost Estimating and Scheduling
- * Project Management Support



GLX Union Square OCS system

Typical Services

- * Rail Systems Design
 - * Real Estate/Right of Way Services
 - * Resident Engineering Support
 - * Resiliency and Sustainable Design
 - * Risk (any/all categories)
 - * Roadway Conditions Assessment
 - * Security Systems Design (any/all categories)
 - * Signals Design
 - * Social Equity Analysis
 - * Specifications
 - * Stakeholder Engagement
 - * Strategic Planning
 - * Structural Engineering and Design
 - * Subsurface Utility Exploration (SUE)
- MBTA Tiger dams at Blue Line Aquarium



Typical Services

- * Transit Operations Support
- * Traffic Data Collection
- * Traffic Engineering
- * Traffic Operations Planning, Studies and Design
- * Transit Systems Design
- * Transportation Planning
- * Tunnel Design
- * Urban Planning
- * Utilities - Investigation (Non-Destructive, etc)
- * Value Engineering
- * Vehicle Procurement
- * Vehicle Engineering
- * Vertical Transportation
- * Water Quality – Assessment and/or Mitigation



MBTA Fenway Portal Flood Protection

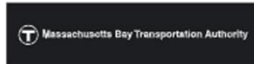
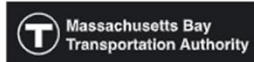
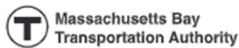
Typical Services

- * Wayfinding & Signage Design
- * Wetlands

T Logo



T Formal Logo



MBTA Wayfinding, Logo, Brand

Panelists

Filomena Maybury - WSP

Kristine Gorman - Jacobs

Dawn Connelly - Green International

Marvin Thomas - Triunity

DBE Task Force Contacts

Abbie Goodman - agoodman@engineers.org

Brian Vaillancourt – brian.vaillancourt@aecom.com

Anna Barry - ambarry@hntb.com

Teresa M. Capuano - tcapuano@bryant-engrs.com

Dawn Connelly - dconnelly@greenintl.com

Ileen Gladstone - igladstone@geiconsultants.com

Kristine Gorman - Kristine.Gorman@jacobs.com

Robin S Greenleaf - robin.s.greenleaf@imegcorp.com

Bryan Jones - Bryan.N.Jones@hdrinc.com

Filomena Maybury - f.maybury@wsp.com

Christine Mizioch - cmizioch@aiengineers.com

Doug Peterson - Douglas.Peterson@mbakerintl.com

Marvin Thomas - marvin.thomas@triunityeng.com

Ellen White - ewhite@hntb.com

Kristine Wickham - kwickham@VHB.com

Next Steps

Complete online survey by Thursday June 9th
Send Abbie Goodman (ACEC/MA) info & project examples package

- 1 attachment (pdf – 10 MB or less)
- Submit by Tuesday June 21
- ACEC/MA will post to web landing page

Make presentation available

Summarize DBE survey results and distribute

What do you need from us?