



Asset Information Delivery

Gathering asset information from design and construction projects

Leadership Team

- Ronnie E. Valdivia, Director
- Peter Seweryn, Deputy Director, Capital Asset Planning
- Dave DeRossette, Deputy Director, Asset Information
- Hugh Quinn, Director, Reliability Engineering

February 28th, 2024





Agenda

- Goals for Asset Information Delivery
- ADIS Preview
- Asset Information Delivery – Design Phase
- Asset Information Delivery – Construction Phase
- ADIS preview
- Asset Tagging Standard Preview
- Asset Information Delivery – eBuilder process
- Supporting Documents
- Next Steps
- Questions and Answers



Goals for Asset Information Delivery

- One of Asset Management's main objectives is to maintain and improve our Enterprise Asset Management System (EAMS).
- A mature EAMS supports the Agency's goal towards a data driven approach in how we manage the lifecycle of our assets to help maintain a state of good repair.
- For our EAM system to be most effective, we need up to date information about our assets.
- During the lifecycle of a capital project (from Design to Construction) the characteristics, count, and condition of our assets change considerably. The goal is to easily capture the information we need in an organized and logical manner that is in harmony with existing workflows of capital projects.
- This initiative also supports the FTA's Special Directive referencing an expedited adoption of an EAMS and Asset Management principles (FTA SD 22-12-006).





Deliverable:

Asset Data Information Sheet (ADIS)

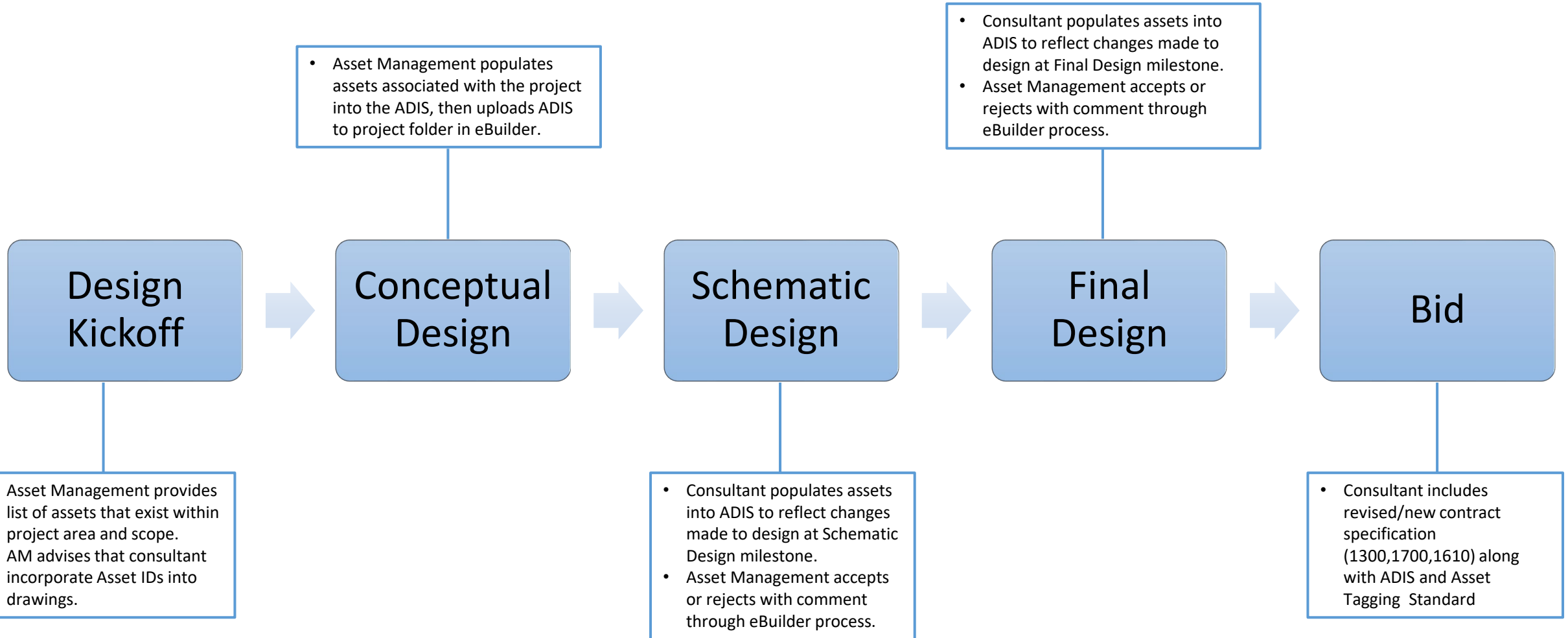
Check Column	ASSET ID	DESCRIPTION	PARENT ASSET ID	ASSET NAME/ABBREVIATION ON DRAWING OR ON SCHEDULE	LINK TO SPECIFICATIONS (PDF)	LINK TO ASSET OEM MANUALS (PDF)	LINK TO AS-BUILTS	COMMISSIONING (IN-SERVICE) DATE	ORIGINAL COST	LATITUDE COORDINATES	LONGITUDE COORDINATES	STREET ADDRESS	SQUARE FOOTAGE	MANUFACTURER
-----Exterior Windows (F)		Exterior windows at VMF				NR						NR	NR	NR
-----Emergency Communications (S)						NR						NR	NR	NR
-----Substructure Drainage (P)						NR						NR	NR	NR
-----Sump Pump (F)				7								NR	NR	
-----Exterior Windows (F)														
-----Sump Pump (F)												NR	NR	
-----Tank (F)													NR	
-----Basements (F)						NR						NR	NR	NR
Facility			NR			NR					NR			NR
---Substructure (F)						NR						NR	NR	NR
-----Foundation (F)						NR						NR	NR	NR
-----Basements (F)						NR						NR	NR	NR
-----Maintenance Pit						NR						NR	NR	NR
-----Substructure Drainage (F)						NR						NR	NR	NR
-----Sump Pump (F)												NR	NR	
---Shell (F)						NR						NR	NR	NR

New ADIS sheet showing increased functionality and color coordination of cells. Description below:

- Yellow highlight in Asset ID column denotes asset tagging is required
- Blue highlight in cells shows that information is required
- Green highlight shows that information has been provided
- Grey highlight with "NR" denotes no information is required

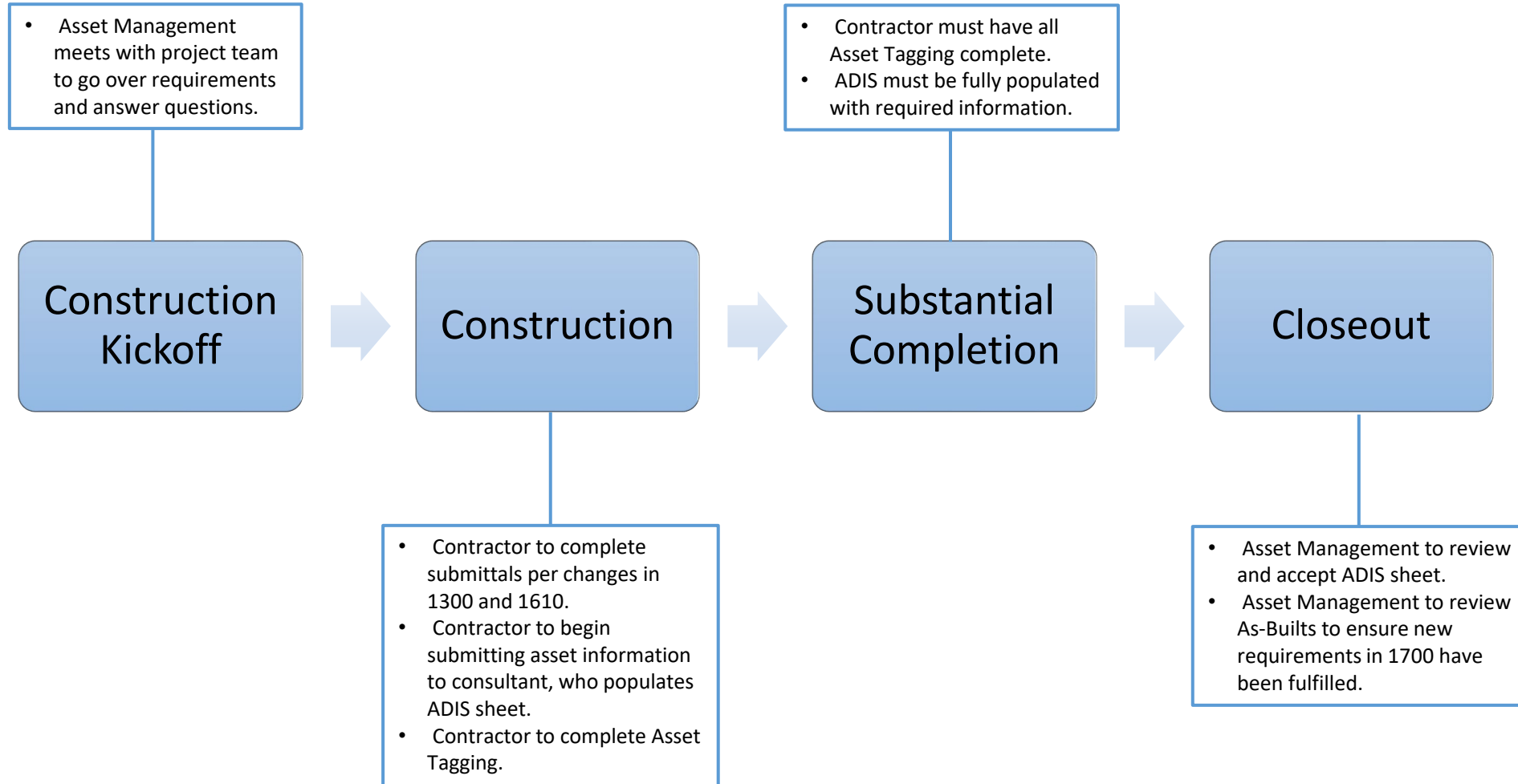


Asset Information Delivery – Design Phase





Asset Information Delivery – Construction Phase





Asset Data Information Sheet (ADIS)

Check Column	ASSET ID	DESCRIPTION	PARENT ASSET ID	ASSET NAME/ABBREVIATION ON DRAWING OR SCHEDULE	LINK TO SPECIFICATIONS (PDF)	LINK TO ASSET OEM MANUALS (PDF)	LINK TO AS-BUILTS	COMMISSIONING (IN-SERVICE) DATE	ORIGINAL COST	LATITUDE COORDINATES	LONGITUDE COORDINATES	STREET ADDRESS	SQUARE FOOTAGE	MANUFACTURER
-----Exterior Windows (F)		Exterior windows at VMF				NR						NR	NR	NR
-----Emergency Communications (S)						NR						NR	NR	NR
-----Substructure Drainage (P)						NR						NR	NR	NR
-----Sump Pump (F)				7								NR	NR	
-----Exterior Windows (F)														
-----Sump Pump (F)												NR	NR	
-----Tank (F)													NR	
-----Basements (F)						NR						NR	NR	NR
Facility			NR			NR					NR			NR
---Substructure (F)						NR						NR	NR	NR
-----Foundation (F)						NR						NR	NR	NR
-----Basements (F)						NR						NR	NR	NR
-----Maintenance Pit						NR						NR	NR	NR
-----Substructure Drainage (F)						NR						NR	NR	NR
-----Sump Pump (F)												NR	NR	
---Shell (F)						NR						NR	NR	NR

New ADIS sheet showing increased functionality and color coordination of cells. Description below:

- Yellow highlight in Asset ID column denotes asset tagging is required
- Blue highlight in cells shows that information is required
- Green highlight shows that information has been provided
- Grey highlight with "NR" denotes no information is required



Asset Tagging Standard

3.1 STANDARD LAYOUT

Figure 1 shows the standard 1.725" x 3.50" x 0.020" layout of the MBTA asset tag and the information that must be printed on each tag.

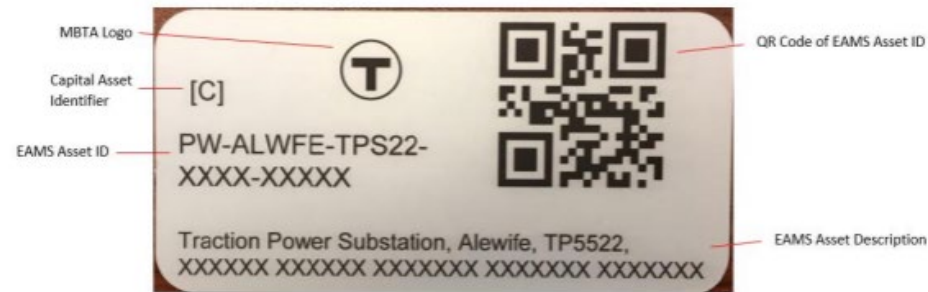


Figure 1: Standard Tag Layout

3.2 ALTERNATIVE LAYOUT

Recognizing that the standard size and layout above may not be possible in all applications, the MBTA has established the layout shown in Figure 2 as an alternative. The size used for this layout shall be determined by the application area on the asset, while ensuring the size of the QR code is large enough to be scanned.

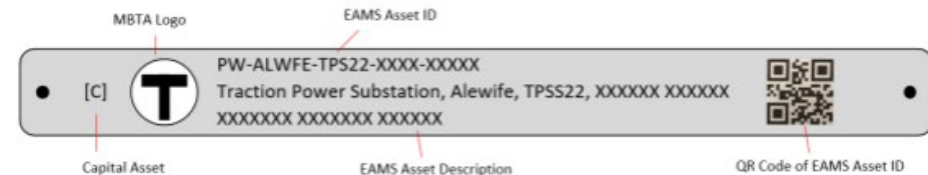


Figure 2: Alternative Layout

The Asset Tagging Standard sets parameters for the Elements (required info), Layout, Creation (printing requirements), and Placement of Asset Tags. Contractors are required to submit on the material and adherence methodology to ensure asset tagging is in harmony with the functionality of the asset.

5.1 CABLE TAGGING

When tagging cable assets, the alternative layout shown in Figure 2 shall be used with the type of attachment or similar displayed in Figure 3 below.



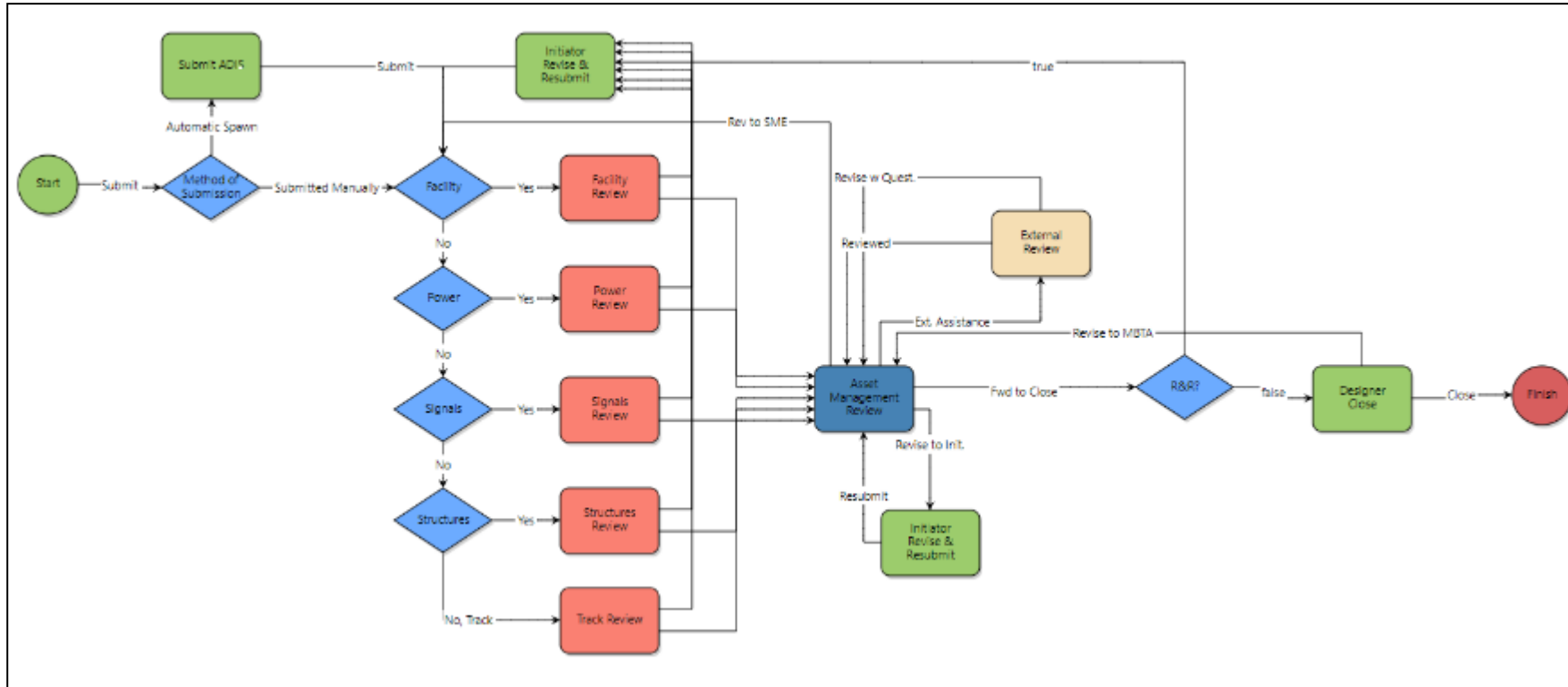
Figure 3: Cable Attachment



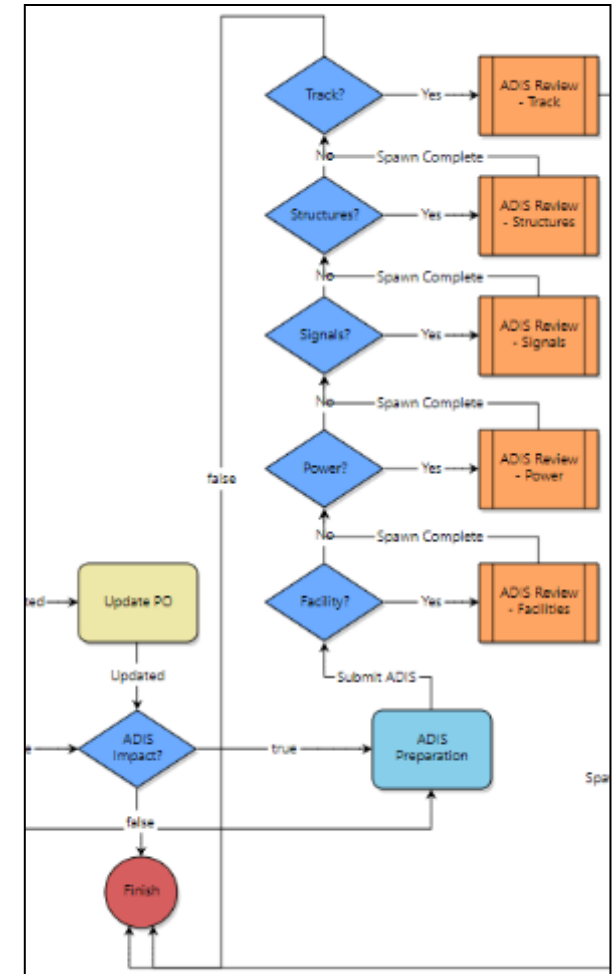
Asset Information Delivery – eBuilder Process

- Asset Management will utilize eBuilder as the medium through which Asset Information Delivery is accepted and managed.

ADIS Submittal Review Process



Change Order Process





Supporting Documents

Documents for Designers

- MBTA ADIS Instructions to Recordkeeper
- Asset Management Design Directive
- [Asset Management Design Directive](#)
- Request for Proposals (amended to include Asset Management requirements)
- Draft ADIS Excel Spreadsheet
- Draft Asset Definition and Data Dictionary Document (AD4)
- Asset Tagging Standard
- Asset Information Delivery Process Diagram
- [ACEC Reference Folder](#)

Documents for Contractors

- Front End (amended to include Asset Management requirements)
 - 01300 – Submittals
 - 01610 – Asset Management
 - 01700 – Construction Closeout
- Draft ADIS .xcel file
- Draft Asset Definition and Data Dictionary Document (AD4)
- Asset Tagging Strategy
- Asset Information Delivery Process Diagram
- [Construction Specifications Table of Contents](#)

Documents for MBTA PMs

- Capital Program Project Management Documents (amended to include Asset Information Delivery requirements)
 - Construction Services Closeout Manual
 - Pre-Bid Review Control Sheet
 - Instructions for Pre-Bid Review Control Sheet
- Asset Tagging Strategy
- Asset Information Delivery Process Diagram



Next Steps

- Distribute Supporting Documents as requested
- Answer Follow up Questions



Questions

Asset Management Contact Information

- Asset Management
 - AssetMgmt@mbta.com
- Ronnie Valdivia
 - Director, Asset Management
 - 617 276 2642
 - Rvaldivia@mbta.com
- Peter Seweryn
 - Deputy Director, Capital Asset Planning
 - 857-214-1414
 - WSeweryn@mbta.com