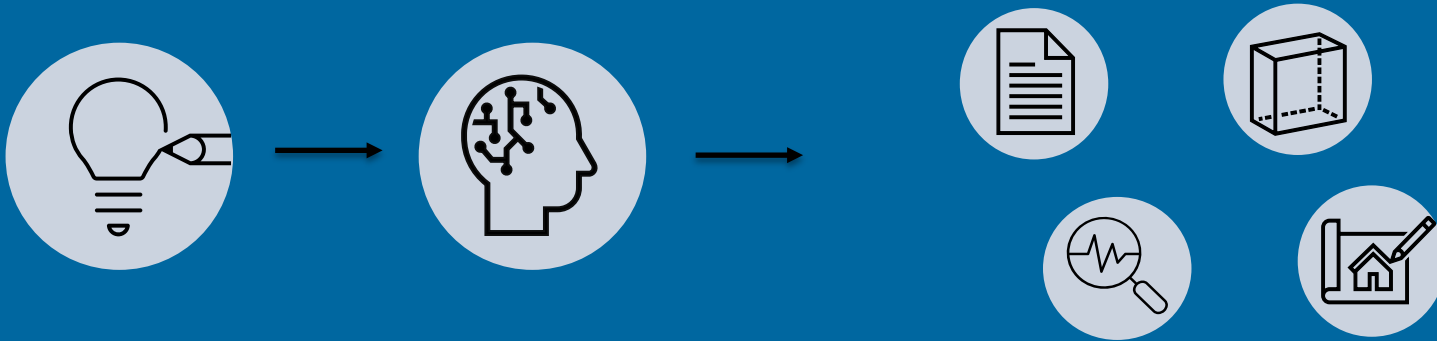


Weston & Sampson<sup>SM</sup>

transform your environment

# ARTIFICIAL INTELLIGENCE IN AE FIRMS



# Topics



How AE firms are  
using AI



Legal Landscape



Risks and  
Opportunities



AI Definitions

# How AE firms are using AI



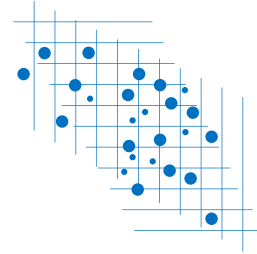
Design  
Automation



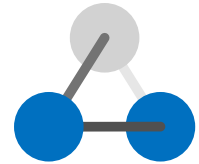
Conversational  
AI



Generative  
AI



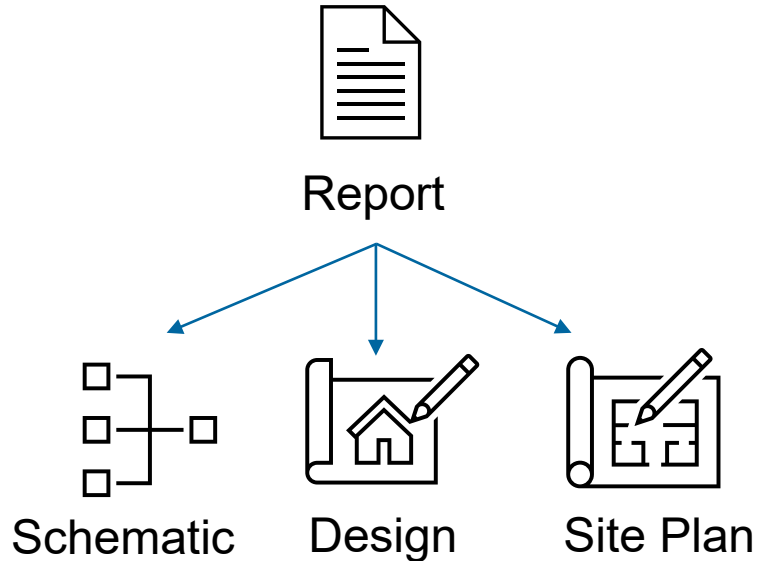
Predictive  
AI



Object  
Recognition



## Water and Wastewater Treatment Facility Design



- Many options per design
- Multiple documents created
- Engineer can create more design concepts for customer
- Includes costs for planning
- Engineer can evaluate more options and scenarios

Transcend Design Generator

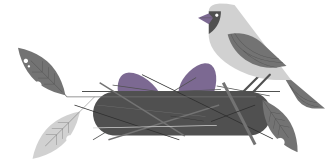


## Conceptual Renderings

- Provide AI framework rendering request
- Provide qualifications and expand on qualifications
- Can use for inspiration
- Explores feasibility of ideas
- Visualizes ideas



Bird



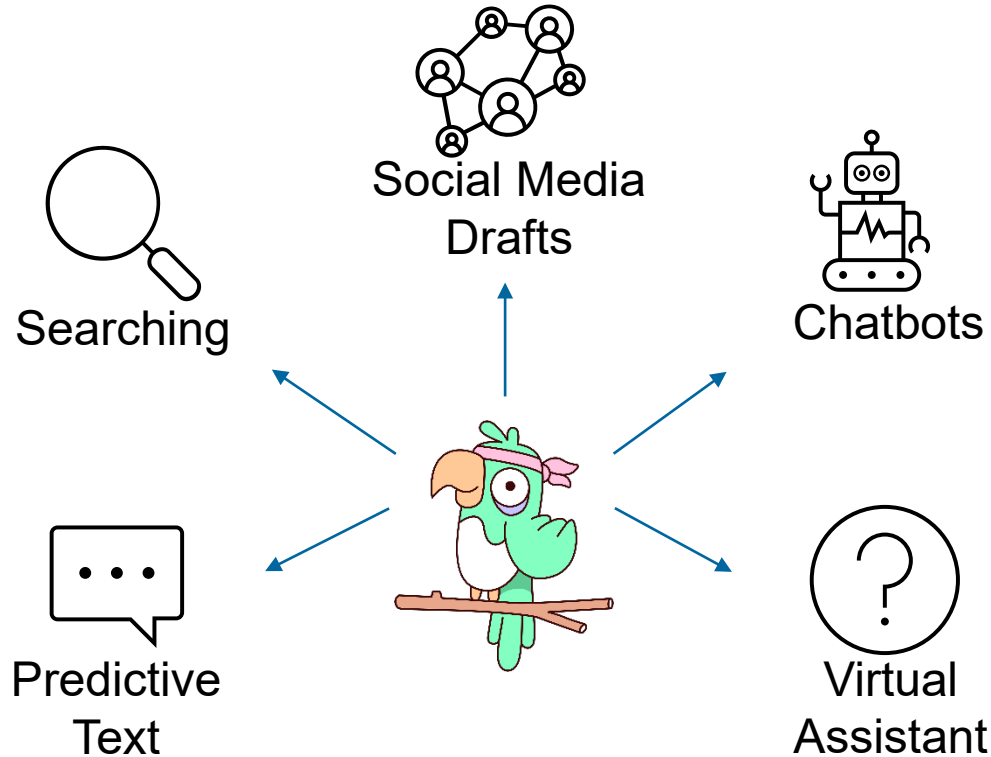
Bird in Nest



Abstract Bird

DALL-E, Midjourney

# How AE Firms Are Using AI – Conversational AI



# How AE Firms Are Using AI – Generative AI



## General

- Smart searches
- Transforms content
- Uses all information provided
- Create proposals and presentations
- Pull data from different sources on one topic

## Request For Proposal (RFP)

- Import and export RFPs
- Suggest answers
- Customizable content library
- Content freshness controls
- Create and assign tasks
- Project oversight and tracking

Microsoft Copilot, Claude, Loopio



# How AE Firms Are Using AI - Predictive AI



Predict changes in water use  
Use reservoir levels, public data  
Visualize scenarios affect on cost/revenue



Risk modeling  
Capital planning  
Leak monitoring



Model Water Distribution systems  
Determine feasibility of new buildings

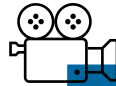
wsOneWater, Voda.ai, ArcGIS, InfoWater

# How AE Firms Are Using AI - Object Recognition



## Manholes

- 360 video of manhole
- CCTV of pipe
- Code defects



## Digital Twins

- Use aerial, streetscape, or indoor imagery
- Create digital twin with Lat/Long
- Analyze assets



## Photos

- Identify objects in photos
- OCR
- Tags
- Search

SewerAI, GeoCam, OpenAsset, PowerAutomate, vHive, ArcGIS

# Legal Landscape

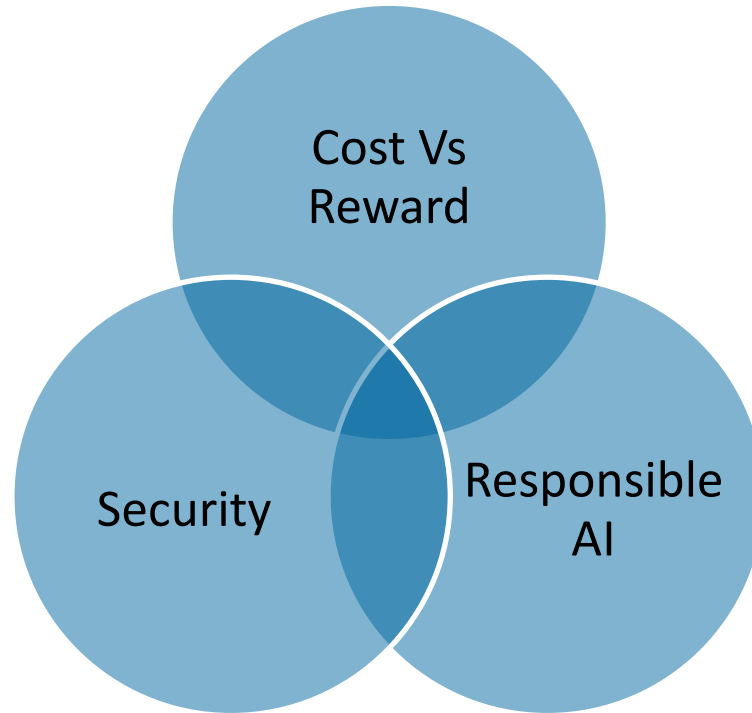
## Best Practices

- Responsible for output
- Review and own quality
- Modify to effect tone and brand
- Better the parameters, better the output
- No private data

## Legals

- Have an AI Policy
- Risk of copyright infringement
- Only humans can be authors
- Output must be changed to be owned
- Fact Check

# Risks and Opportunities



Model evaluations: Alignment Research Center

---

# AI Definitions

Conversational AI- uses NLP to create human like conversations

Deep Learning – models the brains neural network using multiple layers

Digital twin – Virtual representations of physical objects

Generative adversarial networks (GANs)– creates outputs and judges it based on real life information

Generative AI – Creates new content

using patterns from training data and GANs. Can create text, music, images, and video.

Large Language Model (LLM) – Model with very large amount of parameters

Machine Learning

Machine Vision – Using computers to “see”

Model Evaluation & Threat research (METR ) is non profit that assesses if AI systems pose a threat.

Currently working with Anthropic and OpenAI to evaluate their systems.

Natural Language Processing (NLP) – The branch of AI that attempts to understand text and spoken language.

Optical Character recognition (OCR) – Pulling text from images

Transformer model – Using a neural network, the model uses the proximately of words to learn language context.

# QUESTIONS

**thank you**

[westonandsampson.com](http://westonandsampson.com)