



MTBA Asset Management ACEC and CIM Briefing on Asset Information Delivery

Asset Management Leadership Team

- Ronnie E. Valdivia, Director
- Peter Seweryn, Deputy Director, Capital Asset Planning
- Dave DeRossette, Deputy Director, Asset Information
- Hugh Quinn, Deputy Director, Configuration Engineering

Aug 16th, 2023



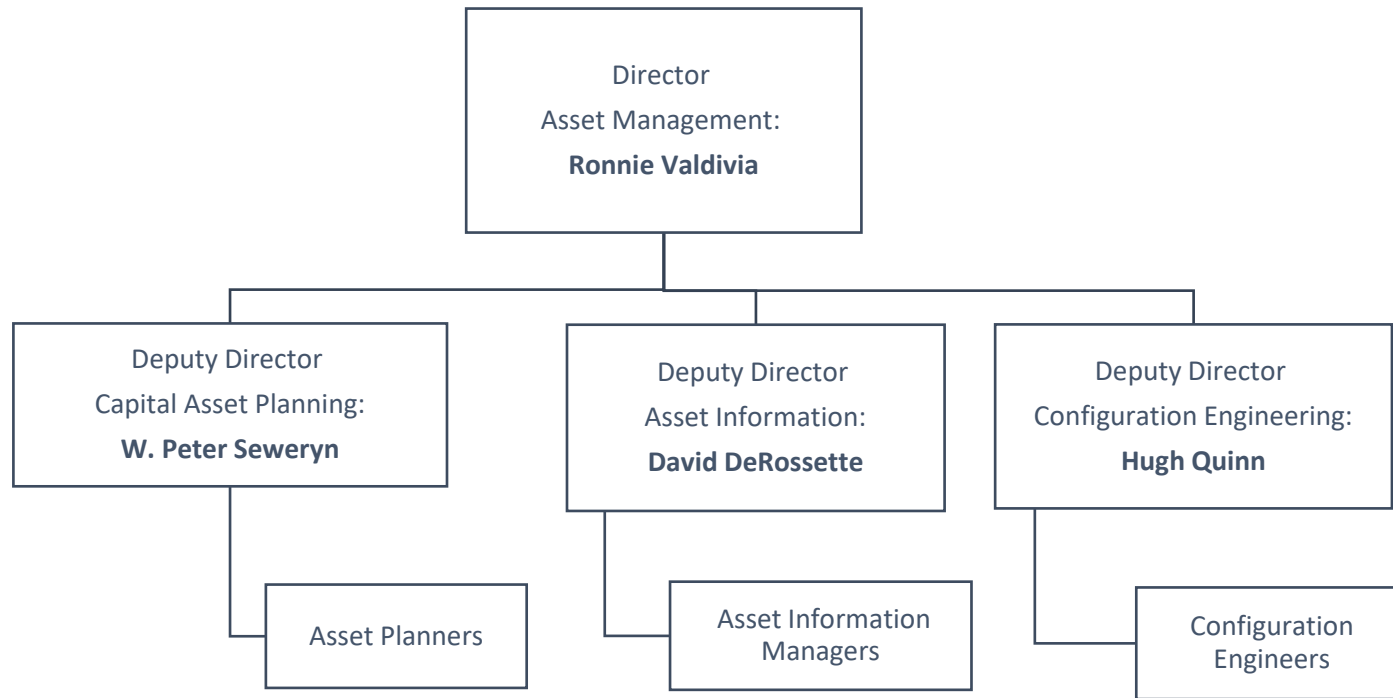


Agenda

- Overview of Asset Management
- Goals for Asset Information Delivery
- Peer Agencies requiring Asset Information Delivery
- ADIS preview
- Asset Information Delivery - objectives by milestone
- Supporting Documents
- Next Steps
- Questions and Answers



Overview of Asset Management



Asset Management is a subset of Reliability Engineering that lives within the Office of the Chief Engineer. It is made up of three groups who work in coordination to maintain and improve MBTA's Enterprise Asset Management system. This inventory provides the foundation from which we help support and enhance; preventative and corrective maintenance, asset planning, capital projects, and information requests.

Asset Management Vision and Mission

Mission

Support the delivery of Safe, Reliable, Equitable, and Sustainable service by establishing a collaborative, data-driven approach to satisfy regulatory requirements, capital planning, and operational work management

Vision

Transition all MBTA assets into a State of Good Repair to provide Safe, Reliable, Equitable, and Sustainable transportation



Goals for Asset Information Delivery

- One of Asset Management's main objectives is to maintain and improve our Enterprise Asset Management System (EAMS).
- A mature EAMS supports the Agency's goal towards a data driven approach in how we manage lifecycle of our assets.
- For our EAM system to be most effective, we need up to date information about our assets.
- During the lifecycle of a capital project (from Design to Construction) the characteristics and condition of our assets change considerably. The goal of this new initiative is to easily capture the information we need in an organized and logical manner that is in harmony with existing workflows of capital projects.
- This initiative also supports the FTA's Special Directive referencing an expedited adoption of an EAMS and Asset Management principles (FTA SD 22-12-006).





Peer Agencies requiring Asset Information Delivery

New Jersey Transit (NJ Transit)

- <https://www.njtransit.com/>

Long Island Rail Road

- <https://new.mta.info/agency/long-island-rail-road>

Washington Metropolitan Area Transit Authority (WMATA)

- <https://www.wmata.com/>

Massachusetts Department of Transportation (MassDOT)

- <https://www.mass.gov/lists/massdot-asset-management>

Port Authority New York New Jersey (PANYNJ)

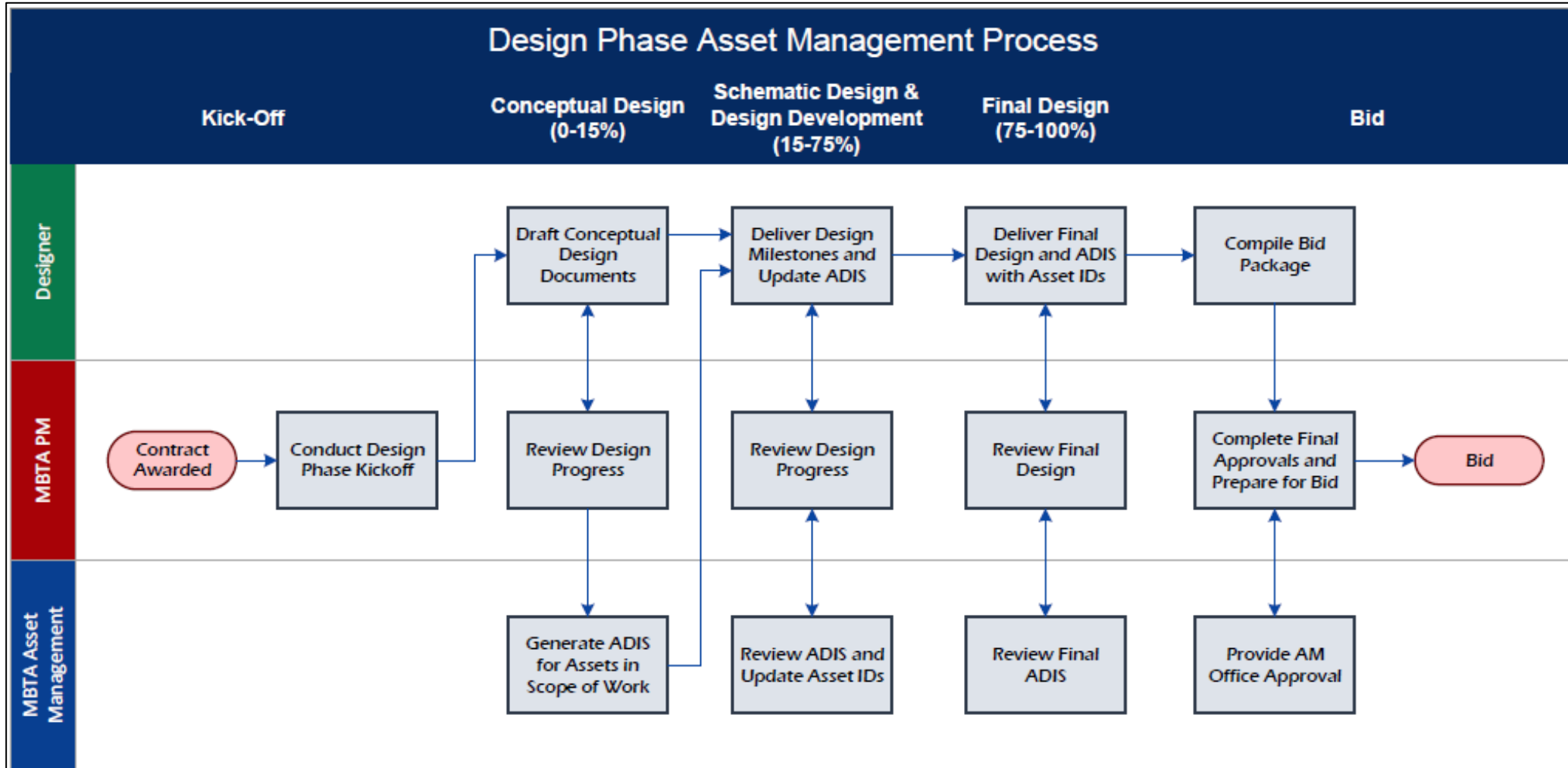
- <https://www.panynj.gov/port-authority/en/index.html>



Asset Data Information Sheet (ADIS)

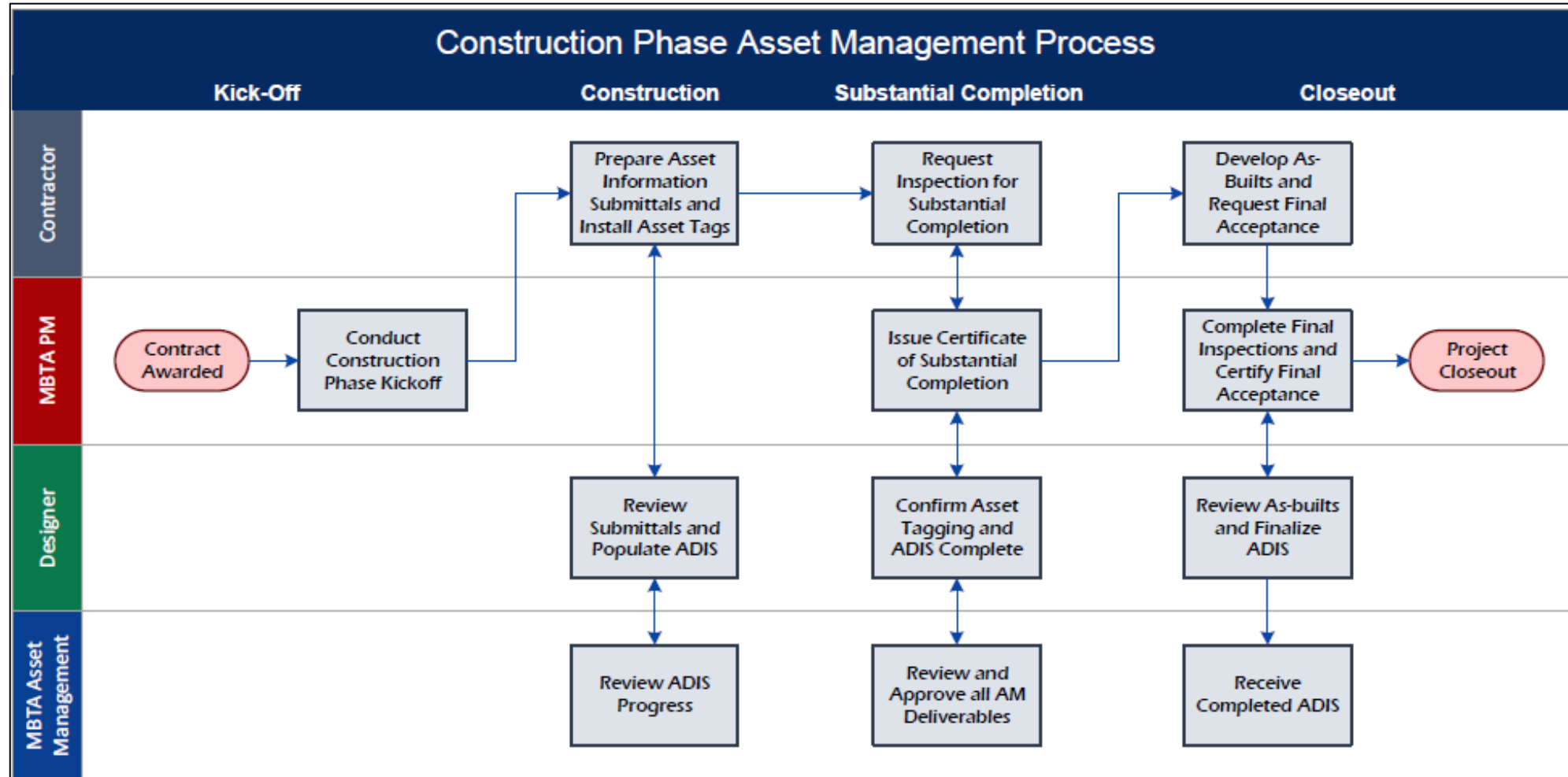


Asset Information Delivery – objectives by milestone





Asset Information Delivery – objectives by milestone





Supporting Documents

Documents for Designers

- MBTA ADIS Instructions to Recordkeeper
- Asset Management Design Directive
- Request for Proposals (amended to include Asset Management requirements)
- Draft ADIS Excel Spreadsheet
- Draft Asset Definition and Data Dictionary Document (AD4)
- Asset Tagging Standard
- Asset Management Process – Capital Projects

Documents for Contractors

- Front End (amended to include Asset Management requirements)
 - 01300 - Submittals
 - 01322 – Value>\$15M
 - 01324 - >\$5M
 - 01325 - \$5M-\$15M
 - 01700 – Construction Closeout
- Draft ADIS .xcel file
- Draft Asset Definition and Data Dictionary Document (AD4)
- Asset Tagging Strategy
- Asset Management Process – Capital Projects



Next Steps

- Working towards a "Go Live" date of new Asset Information Delivery requirements for Nov 15th, 2023
 - Pending internal stakeholder engagement meetings
- Distribute Supporting Documents as requested
- Answer Follow up Questions
- Continue to build out processes within eBuilder that will facilitate document management and milestone acceptance for Asset Management Process.
 - Training will be made available



Questions

Asset Management Contact Information

- Asset Management
 - AssetMgmt@mbta.com
- Peter Seweryn
 - Deputy Director, Capital Asset Planning
 - 857-214-1414
 - WSeweryn@mbta.com