


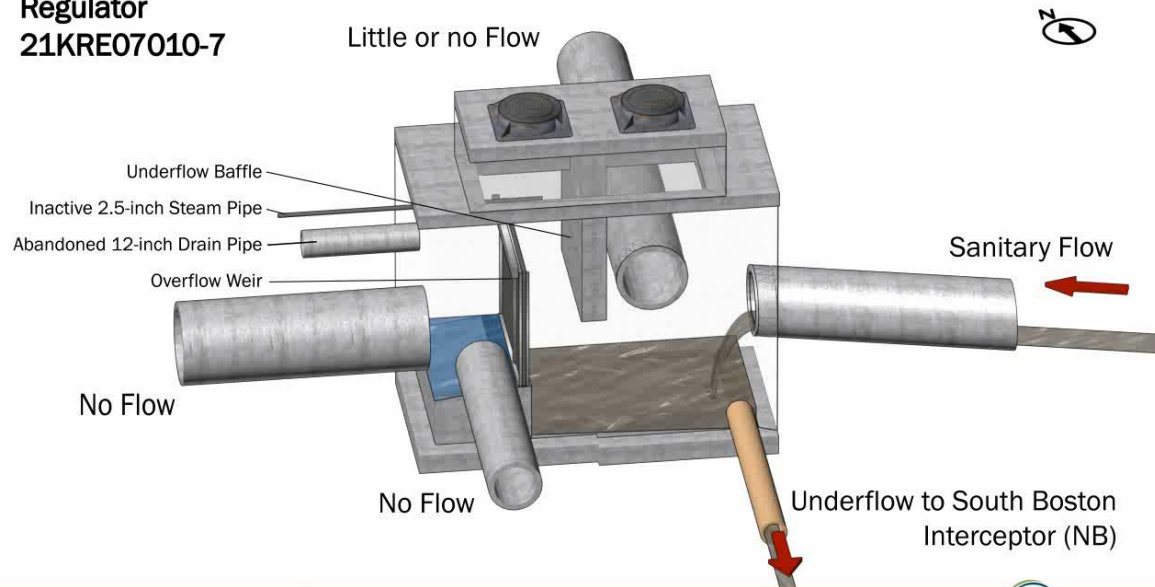


BOSTON WATER & SEWER COMMISSION

- QUASI INDEPENDENT AUTHORITY
 - DISTRIBUTION OF WATER
 - SEWERAGE COLLECTION
 - DRAINAGE CONTROL
 - 1,020 MILES OF WATER PIPE
 - 1,500 MILES OF SEWERS AND DRAINS
 - 10 PUMPING STATIONS
- 

SPECIAL STRUCTURES

Regulator
21KRE07010-7

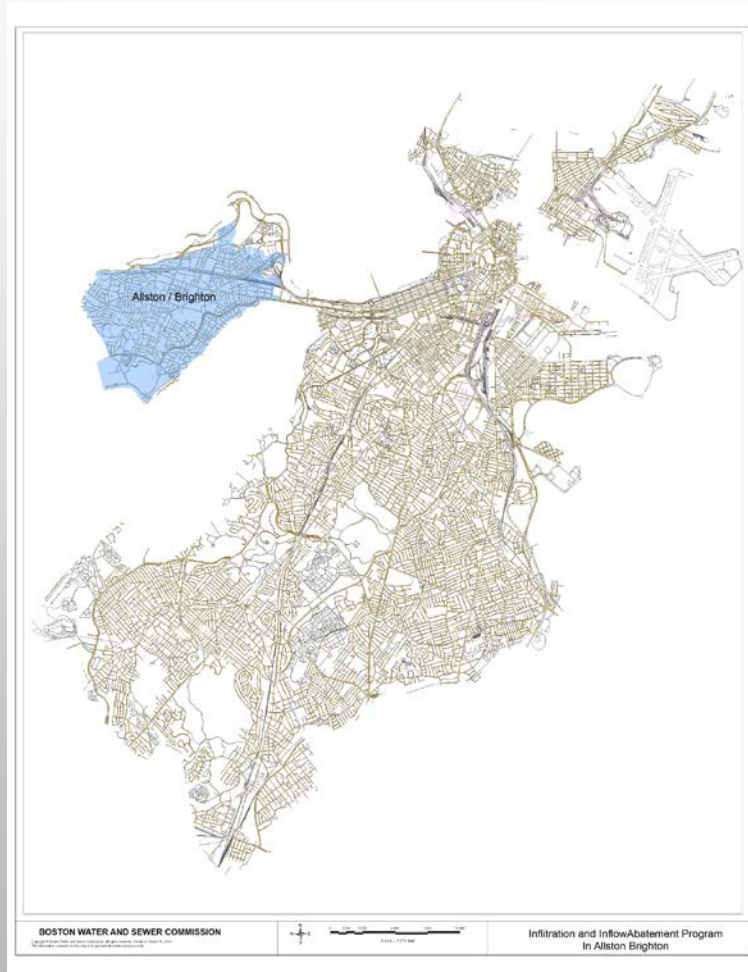


Normal Dry Weather Conditions



- CONTRACT TO DEVELOP DEPICTIONS FOR 50 MORE STRUCTURES.
- RFP EARLY SUMMER

ALLSTON BRIGHTON SSES



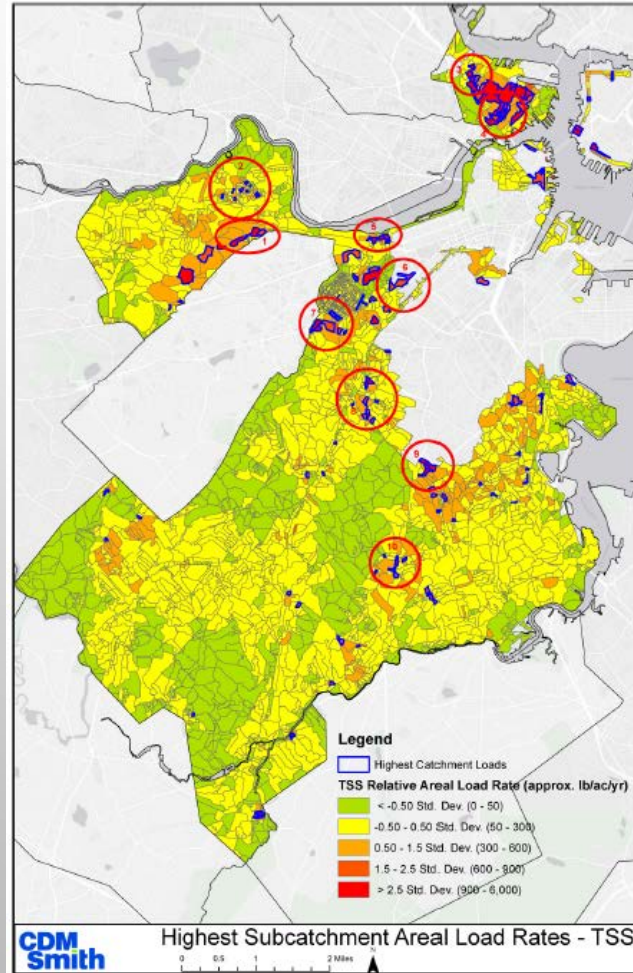
- RFP SUMMER 2019
- 2,500 ACRES
- 399,000 FEET OF SEWER
- 2,300 MANHOLES

MODEL SUPPORT



- SEWER MODEL
- DRAIN MODEL
- STORMWATER QUALITY
- RFP EARLY SUMMER

METERING / SAMPLING



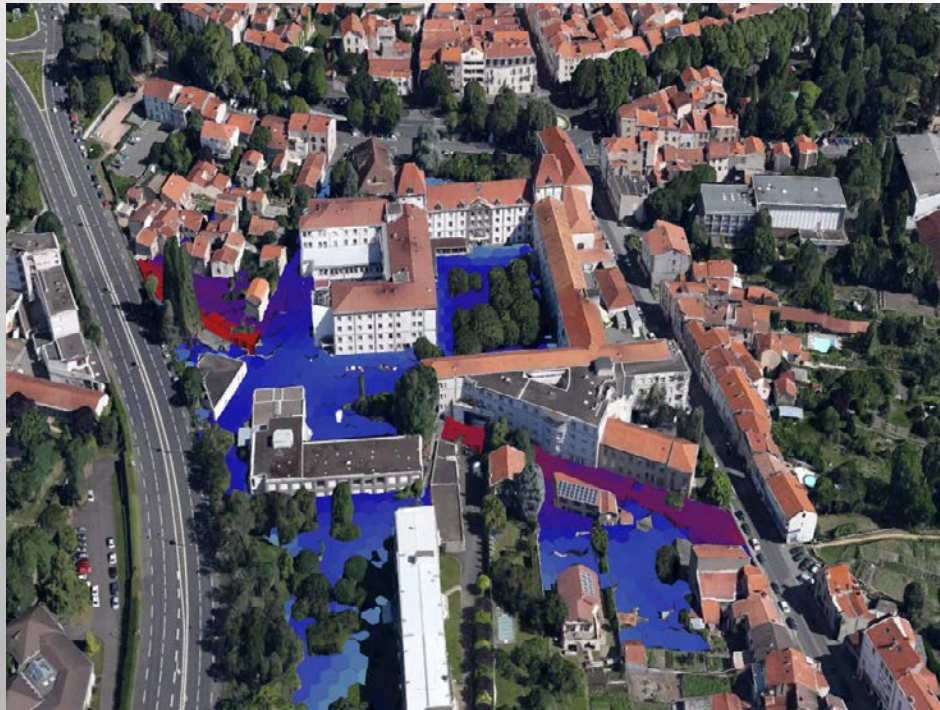
- MODEL CALIBRATION
- PHOSPHORUS
- BACTERIA
- IDDE INVESTIGATIONS
- SUMMER 2019

2019 PROJECTS IN PROGRESS

IMPROVED INUNDATION PREDICTIONS (FOR EMERGENCY PREPAREDNESS)

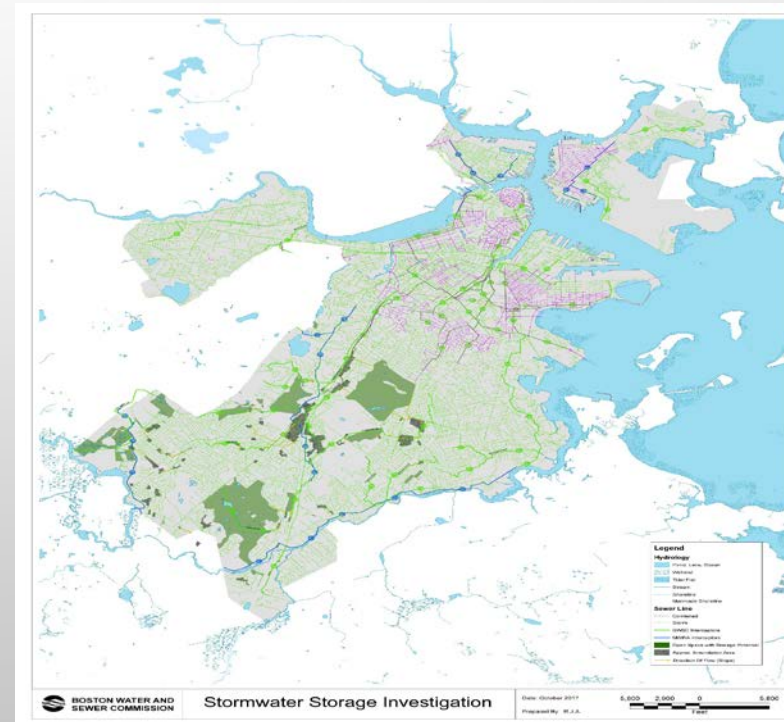
- **INUNDATION MODELING**

Project to develop model to show extent
Duration of inundation in wet weather
event.



- **STORMWATER STORAGE**

Identify areas to store stormwater.



DESIGN DEPARTMENT OPPORTUNITIES FOR 2019


3-YEAR, ON-CALL SERVICE CONTRACTS IN SUPPORT OF BWSC-DESIGNED IMPROVEMENTS

- **6 CONTRACTS BEING ADVERTISED NOW THRU APRIL 22**
 - HYDRAULIC MODELING – DUE APRIL 19TH
 - GEOTECHNICAL – DUE APRIL 19TH
 - SURVEY – DUE MAY 3RD
 - PIPE TESTING – DUE MAY 3RD
 - SUBSURFACE INVESTIGATION – DUE MAY 17TH
 - TRAFFIC MANAGEMENT – DUE MAY 17TH
- **OVERALL VALUE OF \$1.42M OVER 3 YEARS**
- **ALL RFPS AND PROPOSALS THRU BIDNET**

DESIGN DEPARTMENT OPPORTUNITIES FOR 2019

3-YEAR, ON-CALL SERVICE CONTRACTS IN SUPPORT OF BWSC-DESIGNED IMPROVEMENTS

- MOST PROPOSALS WILL NOT REQUIRE INTERVIEWS
- AWARDS MADE AT MAY 22 OR JUNE 26 COMMISSION MEETINGS
- THINGS WE LOOK FOR IN PROPOSALS:
 - KEY STAFF – WHO IS THE PRIMARY POINT OF CONTACT, WHO IS PERFORMING THE WORK
 - BILLING RATES – HOURLY BILLING RATES, SUBCONTRACTOR RATES, OVERHEAD
 - EXPERIENCE – BOSTON-SPECIFIC EXPERIENCE & SUBJECT MATTER EXPERIENCE
 - REFERENCES – WHO ARE YOUR LOCAL CLIENTS I CAN CONTACT FOR FEEDBACK
 - COMPETITIVE ADVANTAGE – WHAT SEPARATES YOU FROM THE PACK



CHARLIE JEWELL
JEWELLC@BWSC.ORG
617-989-7431

MIKE NELSON
NELSONM@BWSC.ORG
617-360-1765