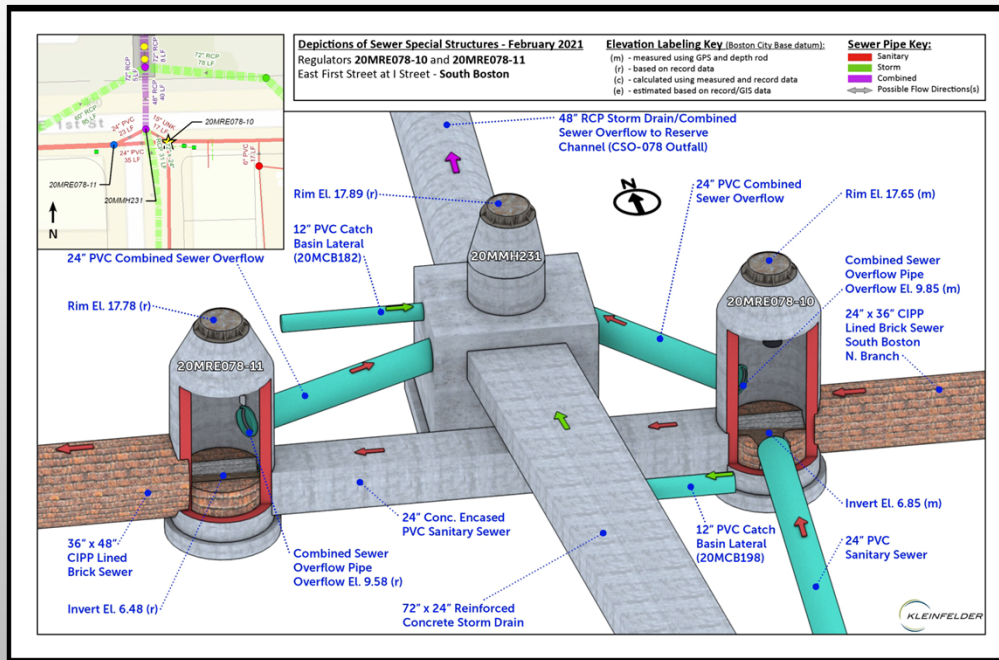


BOSTON WATER & SEWER COMMISSION

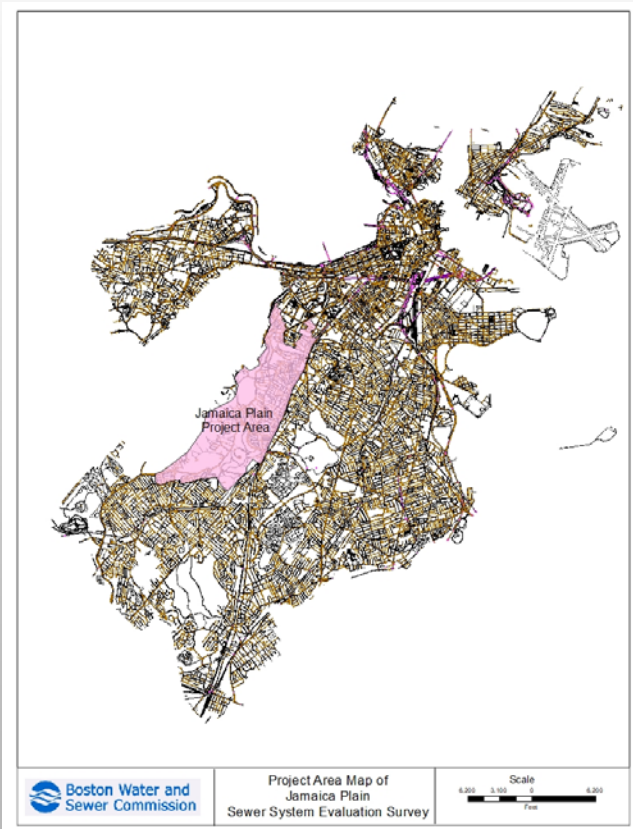
- QUASI INDEPENDENT AUTHORITY
- DISTRIBUTION OF WATER
- SEWERAGE COLLECTION
- DRAINAGE CONTROL
- 1,020 MILES OF WATER PIPE
- 1,500 MILES OF SEWERS AND DRAINS
- 10 PUMPING STATIONS

SPECIAL STRUCTURES



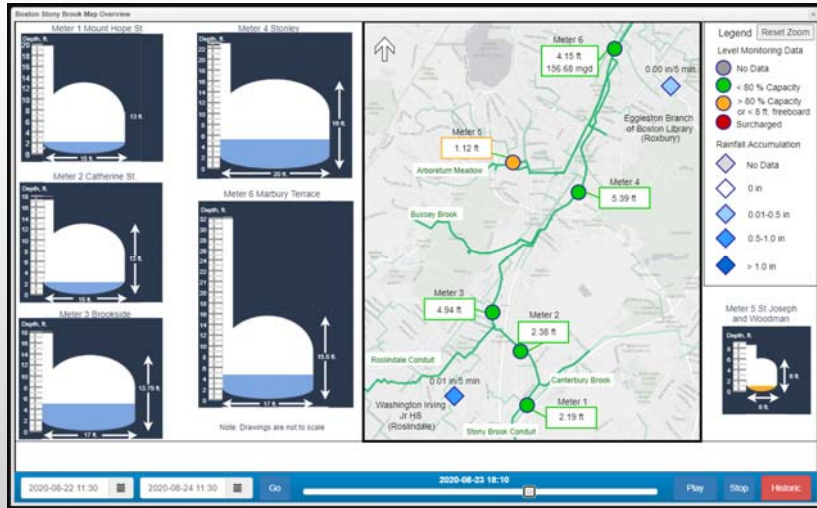
- CONTRACT TO DEVELOP DEPICTIONS FOR 50 MORE STRUCTURES.
- RFP EARLY SUMMER
- \$250,000

JAMAICA PLAIN SSES

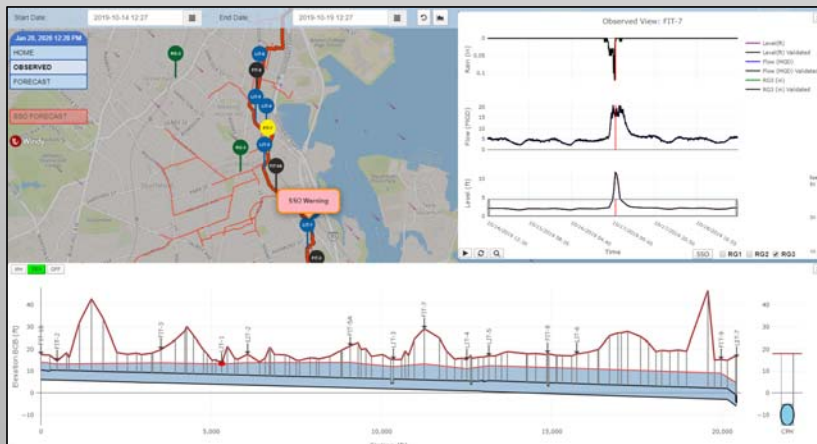


- RFP SPRING 2019
- 1,800 ACRES
- 6,500 BUILDINGS
- 280,000 FEET OF SEWER
- 1,700 SEWER MANHOLES
- 1,600 STORM DRAIN MANHOLES

SENSOR DEPLOYMENT



- RFP LATE SUMMER 2021
- 50 – 75 SENSORS
- SEWER AND DRAIN SYSTEM
- THREE-YEAR CONTRACT
- \$1.3 MILLION



PROJECTS RECENTLY COMPLETED

INUNDATION MODEL (FOR EMERGENCY PREPAREDNESS)

- INUNDATION MODELING

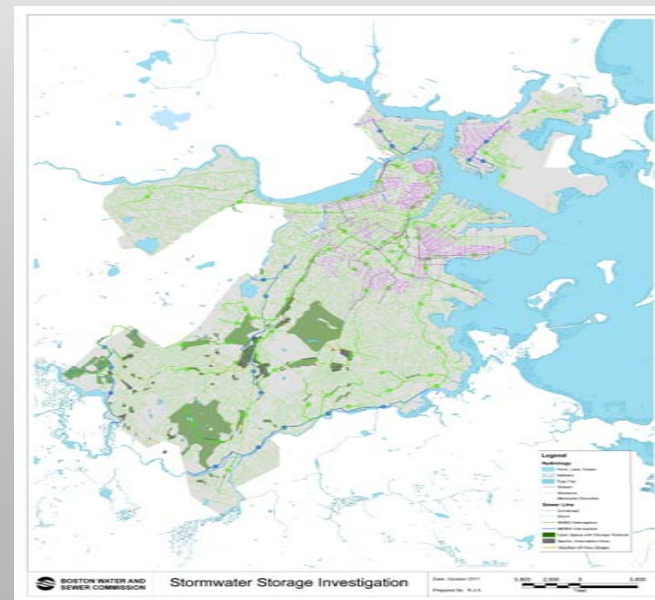
Project to develop model to show extent and duration of inundation in wet weather event.



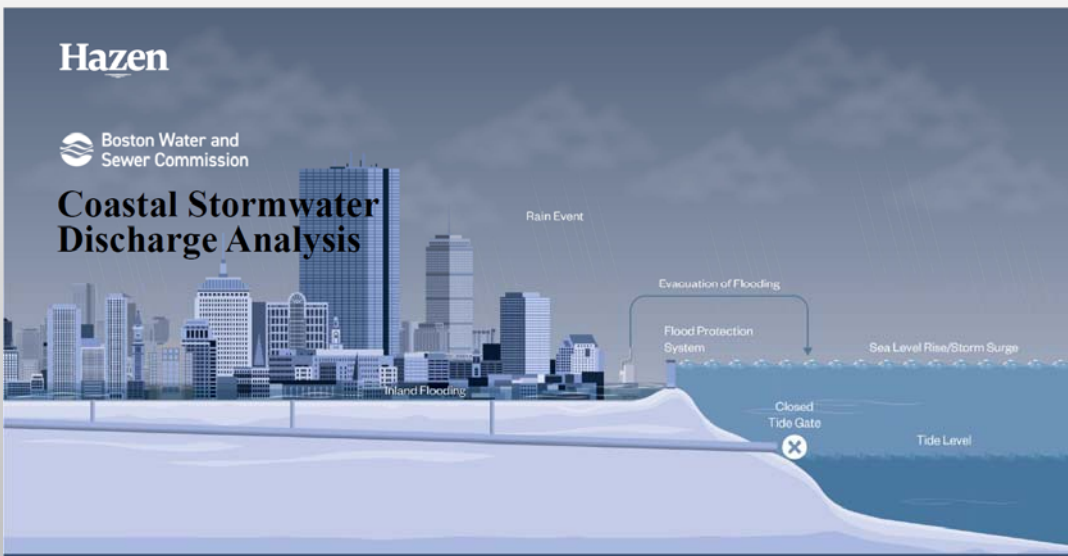
www.bwscstormviewer.com

- STORMWATER STORAGE

Identify areas to store stormwater.



PROJECTS UNDERWAY



- COSTAL STORMWATER DISCHARGE ANALYSIS
- STORMWATER MONITORING AND MODEL VALIDATION PROJECT

DESIGN DEPARTMENT OPPORTUNITIES

- SOUTH BOSTON BEACHFRONT – \$10.9 MILLION
 - WATER RELAY AND SEWER RELAY
 - NOVEMBER 2021 AWARD
- DESIGN OF EAST BOSTON SEPARATION PHASE IV – 2021 - \$3.3 MILLION
- LARGE MAINS STUDY – 2021 - \$1.2 MILLION
 - DEMAND DOWN
 - DEMAND SHIFTED

CHARLIE JEWELL
JEWELLC@BWSC.ORG
617-989-7431

CARY MCGUIRE
MCGUIRECA@BWSC.ORG
617-989-7425