

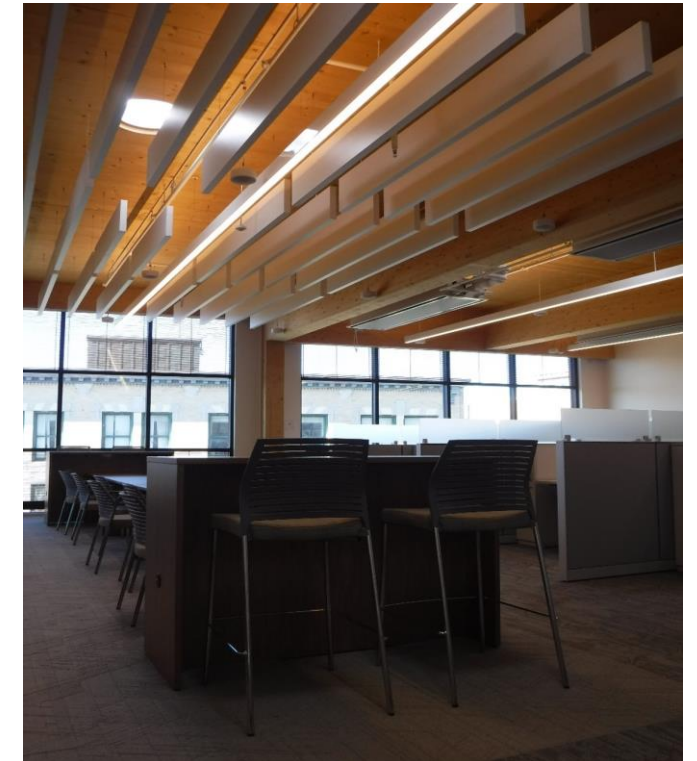


# DCAMM Updates

ACEC | April 2022

# Thank you! Recent Major Project Completions

- **New Dept. Of Unemployment Assistance Building - Brockton**
- **MASAC Taunton**
- **MCI Shirley Food Service Facility**
- **Worcester County Jail & HOC Medical/Intake Facility**



# Agenda

Where we've been

Where we're going



**“ We are stewards of the Commonwealth’s assets. We care for the people of our state and the future of our planet “**

**Facilities Planning**

**We work with state agencies** to create and manage forward-thinking, sustainable buildings to meet the needs of the Commonwealth’s citizens and help achieve a zero-carbon future.

**Project Delivery**

**We are partners with fellow agencies** to help them meet their strategic needs with fiscally responsible building and real estate solutions.

**Property Management**

**We support the growth of the Commonwealth's economy** and actively engage with private sector partners to make it easier to do business with the Commonwealth.

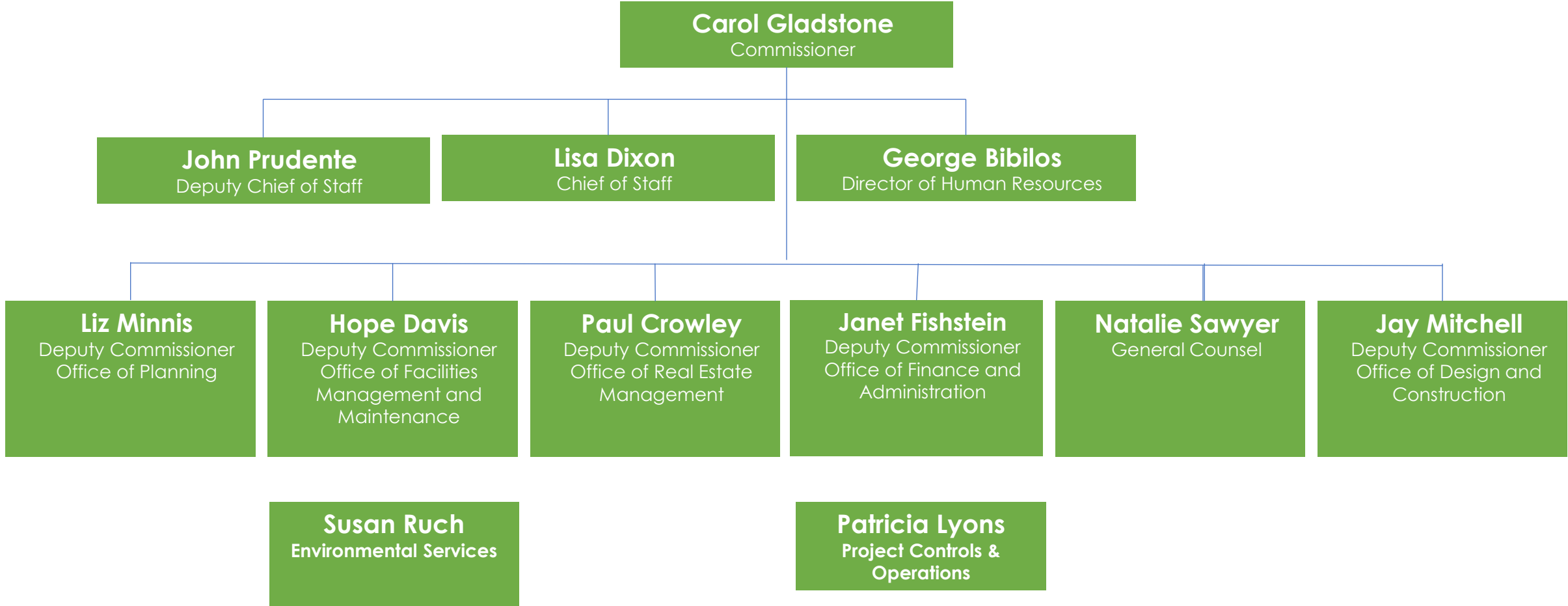
**Real Estate Services**

**Access & Opportunity**

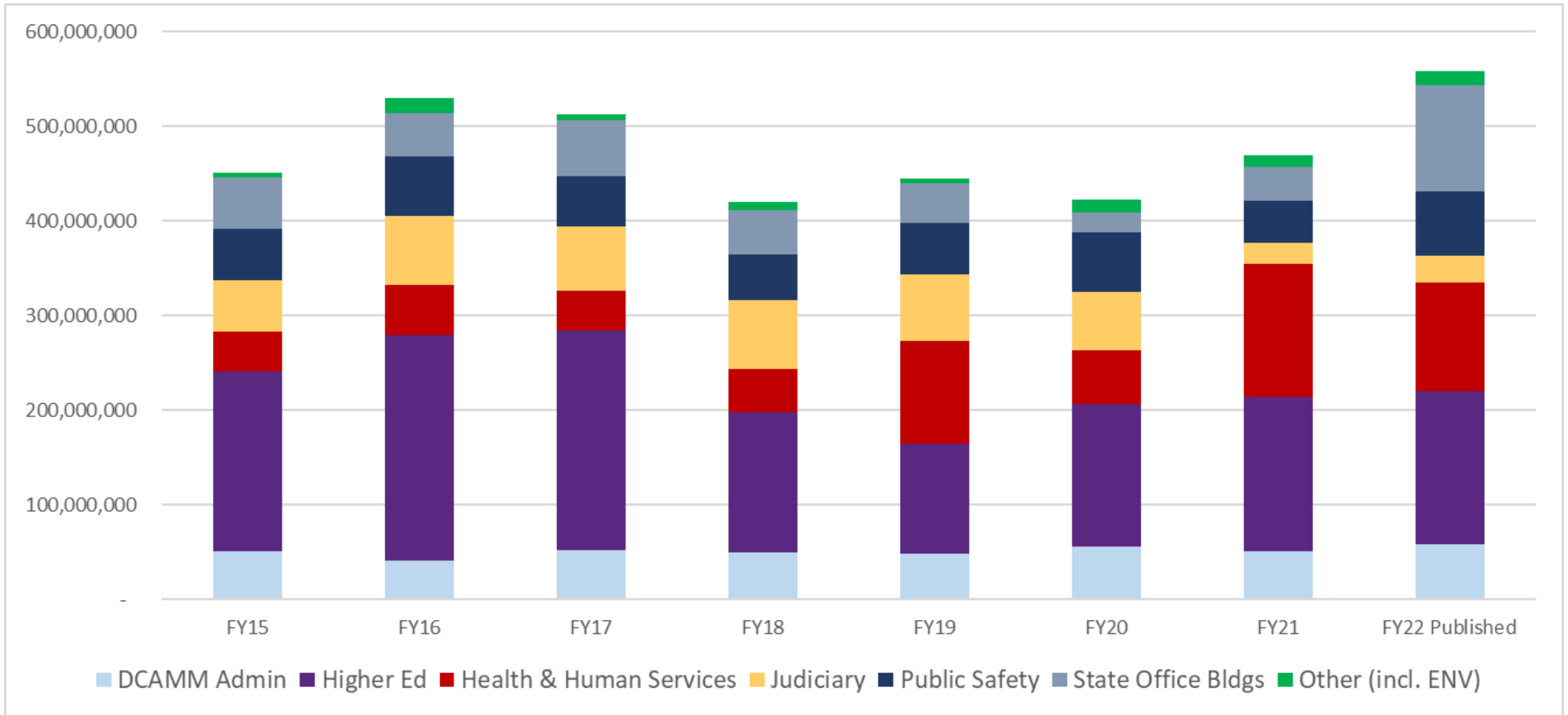
**Contractor Services**

**We work to expand access, opportunity and equity** to create more inclusive services, planning and outcomes for all the citizens of the Commonwealth.

# Leadership Team



# Investment By Programmatic Area (\$)



# Major Projects Underway

## In Construction

• Shattuck Hospital Replacement	\$404 M
• Jamaica Plain State Lab	\$155 M
• Chelsea Soldiers' Home	\$199 M
• Mass Bay CC Health Science Center	\$ 63 M
• Cape Cod CC Science & Engineering Bldg	\$ 38 M
• Westfield State Univ. Parenzo Hall	\$ 40 M
• Western MA Hospital	\$ 36 M
• State Police Barracks Lower Basin	\$ 23 M
• Bunker Hill CC Academic Success Center	\$ 81 M

## In Planning/Design

• Holyoke Soldiers' Home	\$375 M
• Springfield Hall of Justice Renovations	\$ 90 M
• Quincy Trial Court	\$150 M
• Bridgewater State University – Burnell Hall Renovations	\$ 39 M
• Mass Maritime Academy – Tech and Engineering Lab Modernization	\$ 41 M
• Quinsigamond CC – IQ Center	\$ 27 M
• North Shore CC – Life Science Pathways Center/Science Lab Upgrades	\$ 14 M





# Hybrid Adoption in the Commonwealth

15K Executive Branch Employees currently working on Hybrid Schedule!

Over 500K s.f. office space in downtown being renovated for Future of Work!

Guiding Principles for Hybrid Adoption:

1

## Flexible

*Ability to readily adapt to changing conditions – whether personal, localized, regional, or beyond*

2

## Innovative

*Regularly reconsidering practices, tools, and perspectives to increase access, equity, and efficiency*

3

## Resilient

*Empowering employees to provide best in class constituent services*

Key Benefits of Hybrid Adoption:



Improved **work-life balance**



Better employee **productivity and performance**



Continued focus on **diversity, equity, and inclusion** for employees



Greater access to hardware and software that supports **collaborative and mobile work**

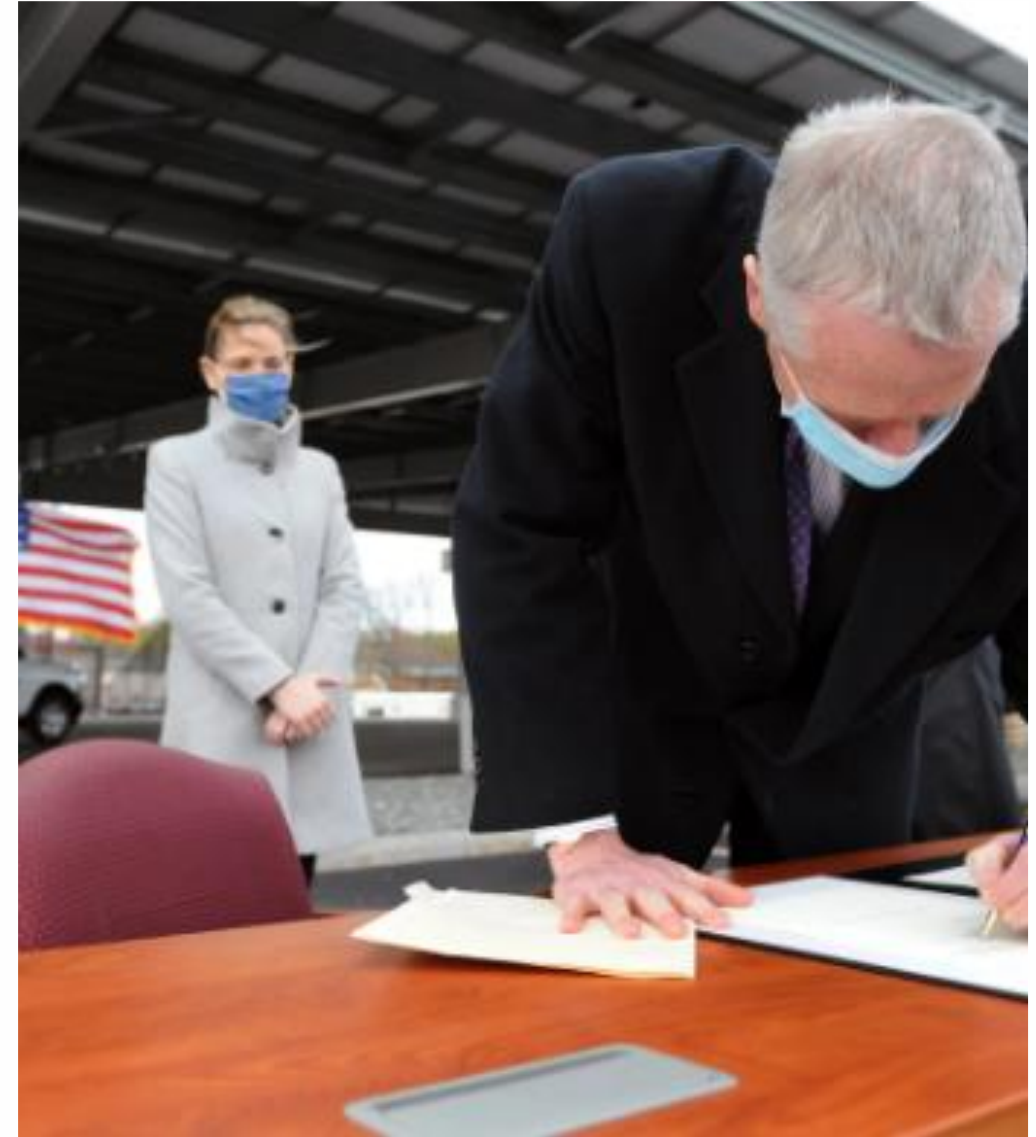


Increased **flexibility in working locations**

# Executive Order 594

## Leading by Example: Decarbonizing and Minimizing Environmental Impacts of State Government

- **Replaces EO 484**
- **Onsite fossil fuels emissions reductions**
- **New Construction**
  - LEED Plus 2.0
  - Efficient electric or renewable thermal
  - EUI targets
  - Maximize onsite renewable energy
  - Climate resilience
- **Existing buildings**
  - Substantial reduction in onsite fossil fuel emissions
  - Optimize building performance
  - Use all available incentive programs
  - Monitor building energy performance
  - Install highest efficiency equipment
- **Guideline documents available at DOER LBE website**





# Doing our Part to Meet Climate Goals

DCAMM's current portfolio includes...

**50+ Projects Reducing  
EUI**

**10 Projects  
Moving toward Fossil  
Fuel Free**

**5 LEED Buildings  
in Design or  
Construction**

**371 Ground Source  
Wells in Design or  
Construction**



# Current pipeline: Energy

## PRF74: Energy, Climate Action, and Facility Advisory Services contract on COMMBUYS

- January 1, 2022 – December 31, 2028
- Re-opens for new participants prior to December 2024

## 25A Energy + (hybrid approach)

New

- State Transportation Building
- Suffolk County Jail and House of Correction
- Multi-site Solar Inverter Replacement

## 25A Design-Build (BoD approach)

- Cape Cod Community College
- Chief Medical Examiner
- Greenfield Community College



# Information on DCAMM Projects

## DESIGNER SELECTION BOARD ADS

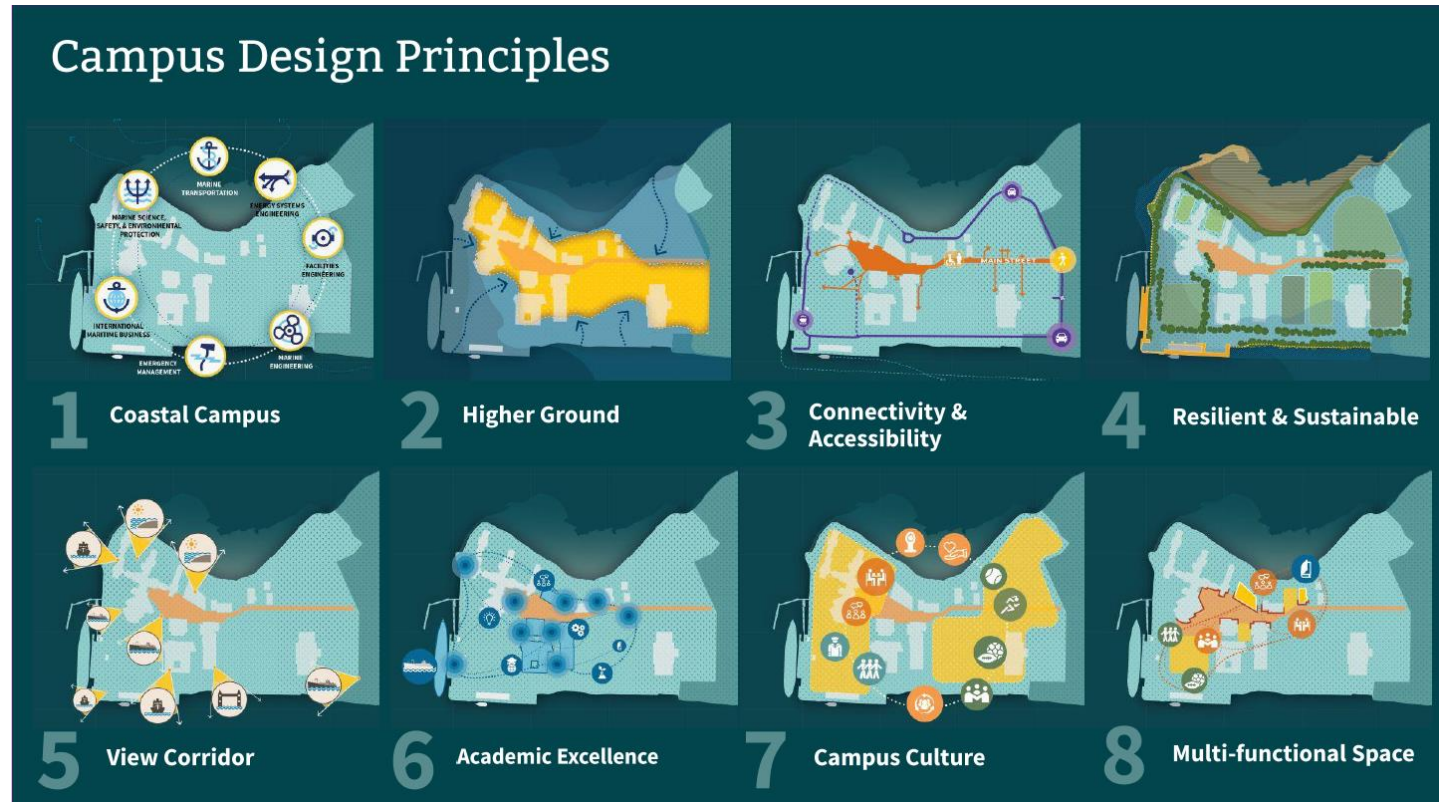
- House Doctors or Single Project Selection
- General scope of work
- Key Objectives
- New, renovation, occupied, phased
- Size and type of building
- Program
- Energy requirements
- Criteria for selection
- M/WBE committment

<https://www.mass.gov/orgs/designer-selection-board>

## CAPITAL INVESTMENT PLAN

<https://budget.digital.mass.gov/capital/fy22/>

- Overview of the Commonwealth's themes
- Priorities of the Administration
- List of projects per agency



# Higher Ed – FY23 Major Projects

## Massasoit Community College - Brockton Science, Nursing and Allied Health Renovations

- Total Project Cost: \$41.1 M
- Scope: Comprehensive renovations to Massasoit's Science and Liberal Arts (LA) buildings.

## Springfield Technical Community College School of Health and Patient Simulation (SHPS) Modernization

- Total Project Cost: \$41.5 M
- Scope: Relocate the SHPS program from Building 20 to on campus Building 13 and off campus to Springfield Technology Park – both spaces require modernization.

## UMass Lowell Olney Hall Instructional Modernization

- Total Project Cost: \$75 M
- Scope: Modernization of instructional spaces in Olney Hall Science Building

## Salem State University SSU BOLD – Modernization of Science Labs and Health Sciences

- Total Project Cost: \$84.3 M
- Scope: Renovation of Horace Mann for health sciences and a new addition for science labs at Meier Hall



UMass Lowell Olney Hall

# Higher Ed – FY23 Building Infrastructure Projects

## **UMass Dartmouth Liberal Arts and Sciences (LARTS) Building Infrastructure Renovation**

- Total Project Cost: \$30 M
- Scope: Renovation includes HVAC and electrical upgrades, addition of air conditioning, ADA improvements, window replacement and building envelope improvements.

## **Berkshire Community College - Pittsfield Envelope Improvements**

- Total Project Cost: \$10 M
- Scope: Investment supports removal of caulking and replacement of windows to comply with EPA requirements at Koussevitzky and Edwards Library

## **Massachusetts Maritime Academy Pier Modification**

- Total Project Cost: \$22 M (state investment - \$10.5 M)
- Scope: Upgrades will support the infrastructure of the Massachusetts Maritime Academy pier for the Academy's training operations.

## **Northern Essex Community College - Haverhill Buildings B and G Infrastructure Renovation**

- Total Project Cost: \$12 M (state investment - \$10 M)
- Scope: Renovation of "B" General Services and "E" Science Buildings includes systems upgrades, window and door replacement, ADA improvements, and enhanced life safety.



# Focus on Project Delivery

- **Getting through the Pandemic**
  - **Site Safety Protocols**
  - **Digital transformation –**
    - Online bidding (construction)
    - Electronic Project Management System
- **CM at Risk (149A) procurement and management**
- **Use of OPMs**
- **Stamped Drawings ONLY for Permitting**





# Major Projects in Design & Construction

## McCormack Bldg (Trade Bids: APR/NOV '22)

Multi-floor Office Reno/Fitout (WT Rich)

\$54 M

## McCormack Bldg (Trade Bids: Summer '22)

Exterior Envelope & Bldg Systems (TBD)

\$8 M

## State Transportation Bldg & MITC (Trade Bids: Summer '22)

Renovation & Modernization (Greene Construction)

\$30 M

## Worcester County Jail & HOC (Trade bids: Summer '22 )

Warehouse Renovations (TBD)

\$12 M

## Essex County Jail & HOC (Trade bids: DEC '22 )

New Inmate Services Bldg (Commodore)

\$45 M



Newton Pavilion



McCormack Bldg



State Transportation Bldg

# Major Projects in Design & Construction

**Quinsigamond Community College (Trade Bids: Winter '23)**  
Accessibility/Critical Repairs (TBD) \$16 M

**Quinsigamond Community College (Trade Bids: Summer '23)**  
IQ Center (TBD) \$27 M

**North Shore Community College (Trade Bids: Fall '23 )**  
Life Science Center (TBD) \$14 M

Major Projects in Design & Construction

**Bridgewater State University (Trade Bids: Fall '23)**  
Burnell Hall Renovation (TBD) \$39 M

**Mass Maritime Academy (Trade Bids: Spring '23 )**  
Tech/Engineering Lab Modernization (TBD) \$41 M



Mass Maritime Academy



Bunker Hill CC E Building



Quinsigamond CC

# Major Projects in Design & Construction

**Holyoke Soldiers Home (Trade Bids: Summer/Fall 2022)\***  
New Facility (Commodore-Walsh JV)

\$375 M



Holyoke Soldiers Home

**Plymouth MASAC (Trade Bids: JAN '23 )**  
Renovation & Modernization (TBD)

\$36 M

**Springfield Hall of Justice (Trade Bids: Late '23)**  
Renovation (TBD)

\$90 M



Springfield Courthouse

**Quincy Trial Court (Trade Bids: Summer '23)**  
New Facility (TBD)

\$150 M



Quincy Trial Court

# Questions?

---

CONSTRUCTION BID SET PLANS AND SPECIFICATIONS AFFIDAVIT – PRIME DESIGNER

M.G.L CH. 149 PROJECTS

I, \_\_\_\_\_, a licensed Architect/Engineer in good standing in the Commonwealth of Massachusetts, hereby certify that I, in conjunction with the following subconsultants (collectively, the Design Team):

completed the set of plans and specifications titled \_\_\_\_\_ and dated \_\_\_\_\_ for Massachusetts State Project number \_\_\_\_\_ (the Project).

I hereby certify that said plans and specifications reflect a true, accurate, and buildable documentation of the efforts required of the general contractor and such other subcontractors and filed sub-bidders that will be contracted by the Commonwealth, by and through its Division of Capital Asset Management and Maintenance, to perform the construction work associated with the Project. I further certify that, pursuant to M.G.L. Ch. 149 Sec. 44F, the plans and specifications detail all labor and materials to be furnished under the contract for construction of the Project.

Furthermore, I certify that said plans and specifications reflect a true and accurate representation of the measurements, observations, marks, architectural, and engineering analyses performed by the Design Team for the project.

After bidding, the Design Team will submit a full set of construction documents stamped by the appropriate disciplines for permitting purposes.

Signed under the penalties and pains of perjury this \_\_\_\_ day of \_\_\_\_\_, \_\_\_\_.

Signature: \_\_\_\_\_

Printed Name: \_\_\_\_\_

Firm: \_\_\_\_\_

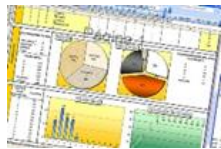
License # \_\_\_\_\_ Updates ACEC

# Increasing: Equity, Diversity & Inclusion (EDI)

## New DCAMM AMP...



Using **Disparity Study** data in...



New MBE/WBE goal setting tool



PROJECT SPECIFIC GOALS

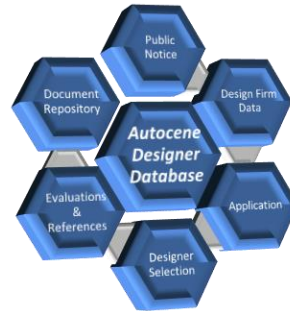
**9.2% WBE**

**EXAMPLE**

**5.5% MBE**

Enables **project specific WBE** goal and a separate **project specific MBE** goal

## DSB Promoting...



DSB designer “Autocene” application now includes easily attainable demographics for all entities

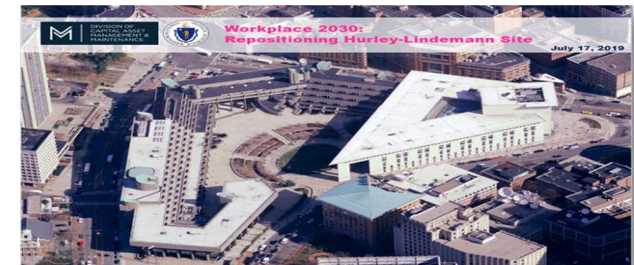
Working on developing “Matchmaking Events” to foster collaboration

## DCAMM Real Estate assessing using the “Massport Model” ...



Weights EDI @ 25% for scoring solicitation responses

DCAMM exploring for use on... Hurley Building Redevelopment



Chelsea Soldiers Domiciliary & Boston State Hospital

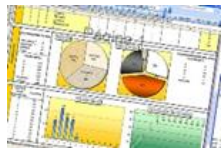
## Commonwealth using “Business Friendly” applications and technology

# Increasing: Equity, Diversity & Inclusion (EDI)

## New DCAMM AMP...



Using **Disparity Study** data in...



New MBE/WBE goal setting tool



PROJECT SPECIFIC GOALS

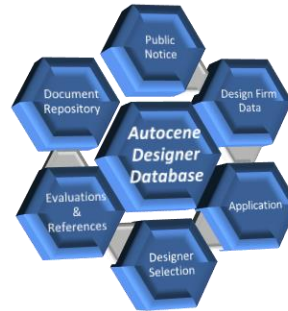
**9.2% WBE**

**EXAMPLE**

**5.5% MBE**

Enables **project specific WBE** goal and a separate **project specific MBE** goal

## DSB Promoting...



DSB designer “Autocene” application now includes easily attainable demographics for all entities

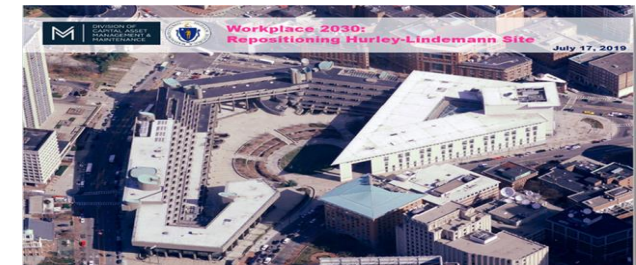
Working on developing “Matchmaking Events” to foster collaboration

## DCAMM Real Estate assessing using the “Massport Model” ...



Weights EDI @ 25% for scoring solicitation responses

DCAMM exploring for use on... Hurley Building Redevelopment



Chelsea Soldiers Domiciliary & Boston State Hospital

## Commonwealth using “Business Friendly” applications and technology