



Massachusetts Bay Transportation Authority

MBTA Update American Council of Engineering Companies

Joseph A. Pavao, Jr., PE, MBTA Chief Engineering Officer

Maureen McDonough, MBTA Acting Chief of Capital Program Support

April 13, 2023



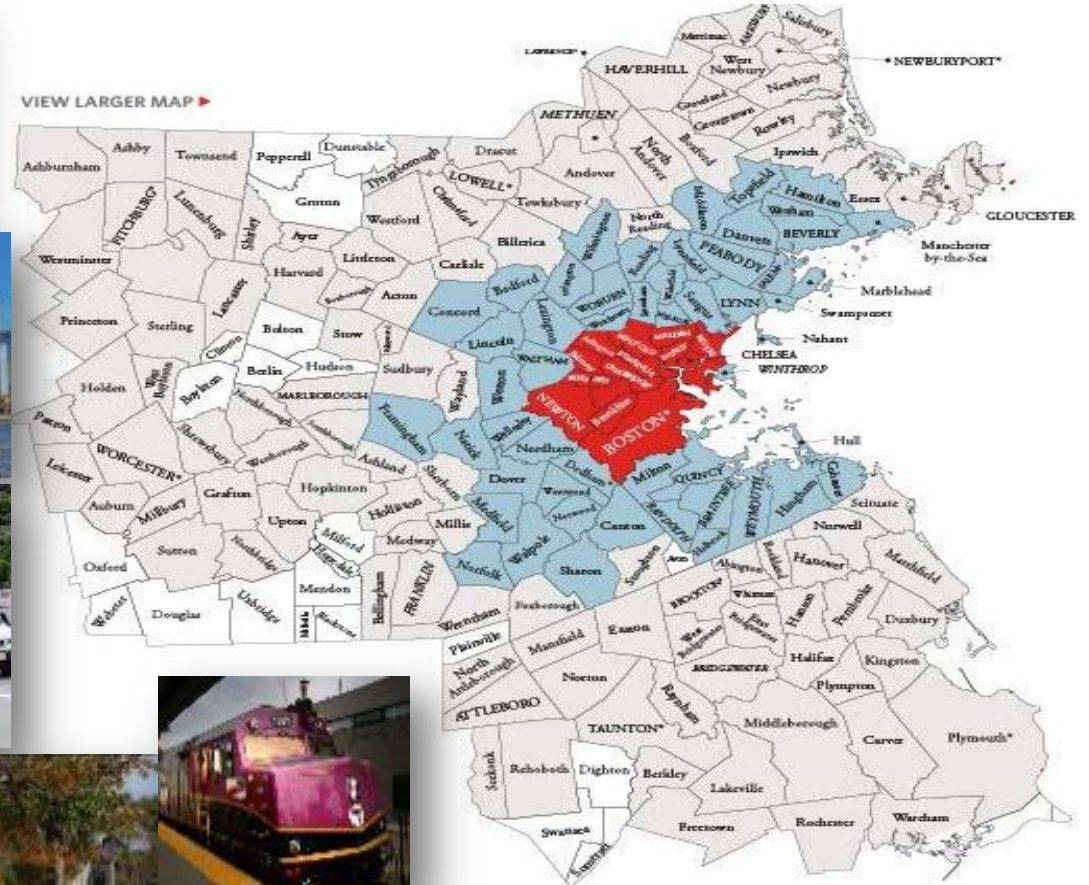
Agenda

- Today's MBTA.
- FTA's Safety Management Inspection, Office of Quality, Compliance & Oversight.
- New PPE Requirements.
- Department Priorities.
- Contracts: Recent Selections, Procurements in Process, and Upcoming Procurements.
- Capital Investment.
- Current Initiatives.












Today's MBTA

America's 4th largest transit system.
175 cities and towns form the MBTA Service District:
3,200 square mile area.
~4.7 million residents.
Nearly 700 thousand trips each weekday.
203 million boardings in FY2022.
A broad variety of transit modes contributes to the T's amazing complexity:
Subways,
Locomotives & commuter rail coaches,
Ferries,
Paratransit services,
Buses (most ubiquitous mode).



MBTA Assets at a Glance

RED LINE		226 Vehicles, 22 Stations/Stops	BUS		1076 Vehicles, 6887 Bus Stops 8 Garages*, 155 Bus Routes 4230 Bus Route Miles
GREEN LINE		221 Vehicles, 70 Stations/Stops	COMMUTER RAIL		110 Locomotives, 479 Coaches 137 Stations, 394 Track Miles 4 North Side Lines, 8 South Side Lines <i>Operated by Keolis.</i>
ORANGE LINE		126 Vehicles, 20 Stations/Stops	FERRY		12 Boats (4 are MBTA-owned) 7 Terminals, 4 Routes** <i>Operated by Boston Harbor Cruises.</i>
BLUE LINE		94 Vehicles, 12 Stations/Stops			
MATTAPAN LINE		10 Vehicles, 8 Stations/Stops			
The RIDE		304 Sedans, 399 Lift-equipped Vans			

**North Cambridge closed for future renovations*

*** Recently added route from East Boston to Long Wharf.*

OL: currently scrapping the 1200 series trains; still onboarding the 1400 series trains. Vehicle count of 126 is what is currently on property and accepted by the vehicle procurement project.



FTA Safety Management Inspection

Federal Transit Authority's Safety Management Inspection covered these areas:

- Rail transit operations (Red, Orange, Green, Blue Lines and the Mattapan Trolley)
- Employee Training
- Vehicle maintenance
- Signals train control and track access
- Capital project delivery and state of good repair
- Traction power
- Facilities
- Safety management



FTA SMI Report Overview & MBTA Office of QC&O Creation

FTA issued 8 Special Directives (SDs): 42 Findings, 69 Actions.



MBTA created the Office of Quality, Compliance & Oversight in response to the SMI Report.

Visit www.mbta.com/QCO

QCOO manages actions & projects related to the SMI report.

- Formed Advisory Committees.
- Identified Adaptive Challenges and Technical Challenges.
- Engaged Technical Expertise (Best Practices Review, Gap Analysis, Solution Design, Implementation Support).
- Engaged Internal Stakeholders & Frontline Workers.
- *Practicing Transparency & Strong Communication (E.g., Contractor Engagement).*



Visit www.mbta.com/FTAResponse



New & Revised PPE requirements.

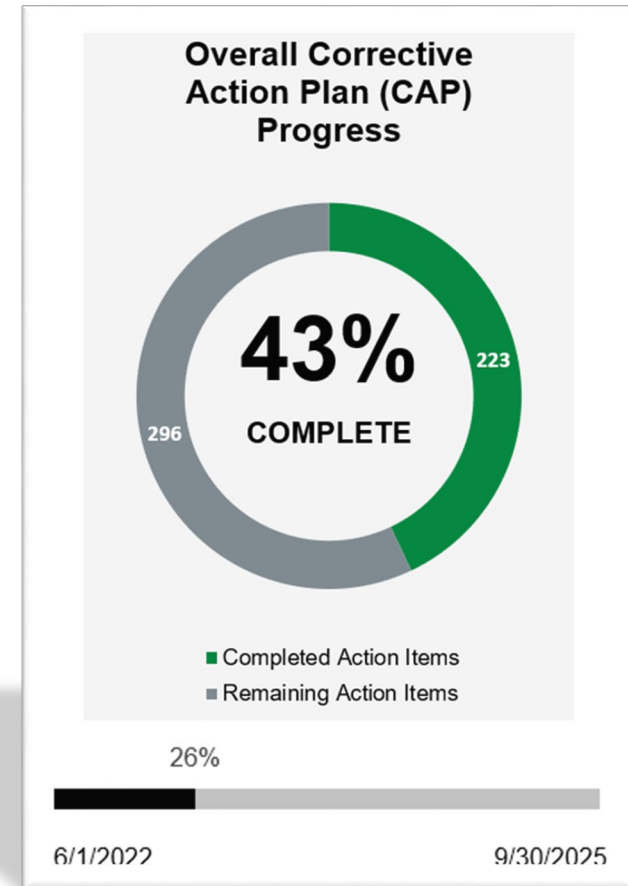
Visit www.mbta.com/engineering



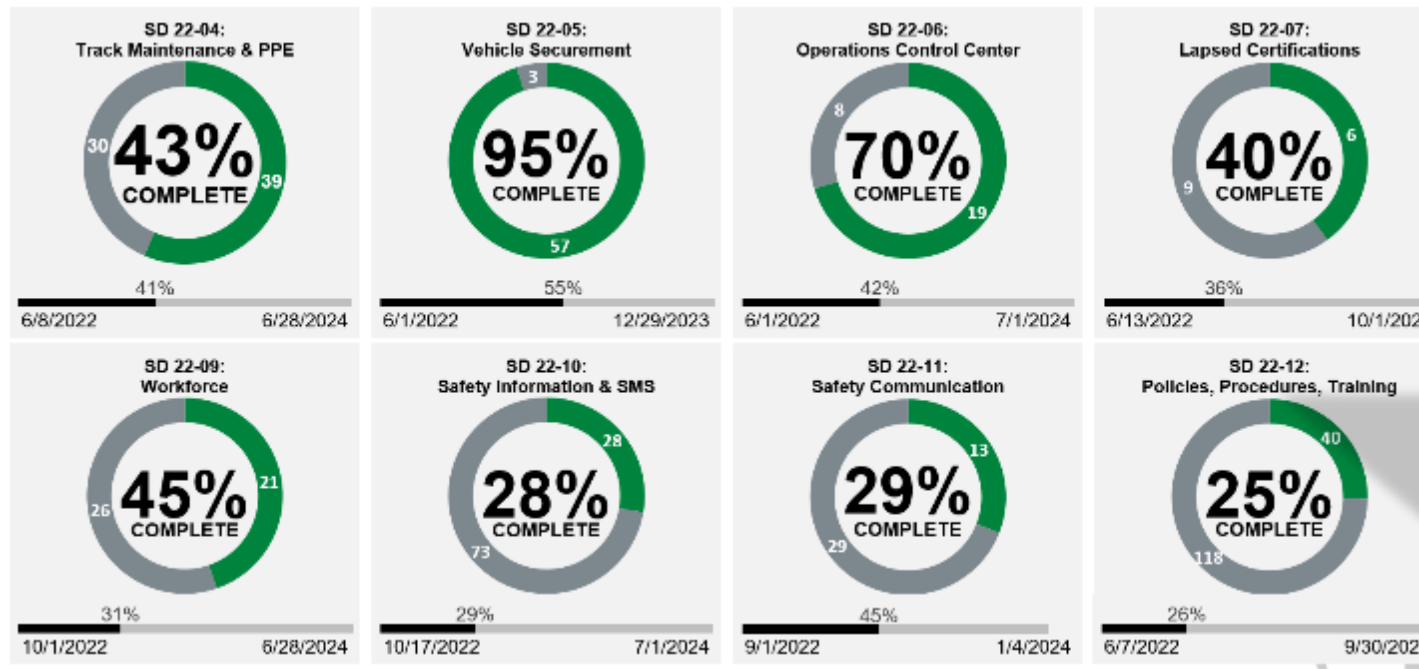
Corrective Action Plans Progress Tracked Online

MBTA developed a series of CAPs about how findings and required actions will be resolved and how improvements will be implemented across the organization.

Progress on the 8 Special Directives can be viewed online: Visit www.mbta.com/FTAResponse



Data as of March 26, 2023



New or Revised PPE Requirements

www.mbta.com/engineering

design consultant's responsibility to ensure the latest standards and requirements are used. Where conflicts exist, typically the most stringent requirement applies.

Directives
Directives override standards and guidelines for specific elements in prior documents.

Safety Resources
Learn about changing safety requirements for employees and contractors as we implement the directives in the Federal Transit Administration's Safety Management Inspection report.

Design Standards and Guidelines
Guides, manuals, and materials provide design requirements and goals for MBTA facilities including stations, bridges, and signage.

Maintenance Standards
Procedures and requirements in these documents outline facilities' maintenance and operational needs.

Project-Specific Standards and Criteria
Several project design manuals, including select manuals for South Coast Rail and the Green Line Extension, are available for reference and guidance only.

Procedures
Requirements and expectations for drawings and specifications offer guidance for different stages of design development.

New Safety Resources section.

Engineering

- Design Standards and Guidelines
- Maintenance Standards
- Directives
- Project-Specific Standards and Criteria
- Procedures
- Specifications
- Strategy
- Safety Resources

Safety Resources

- 🔗 #23-03 Safety Flash: PPE Requirements (March 9, 2023)
- 🔗 Operations Special Order 22-244: Special Order Rule regarding minimum PPE and required access to ROW (February 24, 2023)
- 🔗 Operations Special Order 22-250: Special Order Rule regarding Safety Rules Compliance Program to verify PPE and ROW procedures (February 24, 2023)
- 🔗 Quality, Compliance & Oversight: Contractor Engagement Meeting presentation (February 15 & 16, 2023)
- 🔗 Quality, Compliance & Oversight: Contractor Engagement Meeting questions and answers (February 15 & 16, 2023)

...watch for updates.

What does this mean for you right now?

NEW	REQUIREMENTS/REVISIONS
Headgear	Hard hats must be worn at all times.
Hand protection	Hand protection must be worn when working with tools, equipment, or materials.
Eye protection	Eye protection must be worn when working with tools, equipment, or materials.
Footwear	Safety shoes must be worn at all times.
High-visibility clothing	High-visibility clothing must be worn at all times.
Additional safety requirements	Additional safety requirements may apply to specific tasks.

HAZARDS:

- Falling objects
- Moving machinery
- Tripping and falling
- Contact with live electrical equipment
- Contact with moving equipment
- Contact with sharp objects
- Contact with hot surfaces
- Contact with toxic substances
- Contact with radioactive materials
- Contact with compressed gases
- Contact with high-pressure fluids
- Contact with high-voltage electrical equipment
- Contact with low-voltage electrical equipment
- Contact with fire
- Contact with explosion
- Contact with chemical spills
- Contact with biological hazards
- Contact with environmental hazards
- Contact with weather conditions
- Contact with terrain conditions
- Contact with water conditions
- Contact with ice conditions
- Contact with snow conditions
- Contact with wind conditions
- Contact with rain conditions
- Contact with fog conditions
- Contact with low-visibility conditions
- Contact with poor lighting conditions
- Contact with poor communication conditions
- Contact with poor coordination conditions
- Contact with poor decision-making conditions
- Contact with poor judgment conditions
- Contact with poor risk assessment conditions
- Contact with poor safety culture conditions
- Contact with poor safety leadership conditions
- Contact with poor safety training conditions
- Contact with poor safety awareness conditions
- Contact with poor safety knowledge conditions
- Contact with poor safety skills conditions
- Contact with poor safety attitudes conditions
- Contact with poor safety behaviors conditions
- Contact with poor safety compliance conditions
- Contact with poor safety performance conditions
- Contact with poor safety incident reporting conditions
- Contact with poor safety investigation conditions
- Contact with poor safety corrective action conditions
- Contact with poor safety monitoring conditions
- Contact with poor safety evaluation conditions
- Contact with poor safety improvement conditions

SAFETY FLASH

ROW PPE REQUIREMENTS

MARCH 9, 2023

UNDERSTANDING THE HAZARDS

The MBTA Right-of-Way (ROW) Safety Flash is a critical tool for ensuring that all workers who work near the ROW are properly trained and equipped to work safely. This document provides a comprehensive overview of the hazards associated with working in the ROW and the PPE requirements that must be followed to ensure the safety of all workers.

WHOM IT AFFECTS

This affects any MBTA or contracted employees who work near the ROW.

ITEM	REQUIREMENTS
Hard Hat	Must be worn at all times. Must be ANSI Z89.1 Type I, Class E.
Hand Protection	Must be worn when working with tools, equipment, or materials. Must be ANSI Z89.1 Type I, Class E.
Eye Protection	Must be worn when working with tools, equipment, or materials. Must be ANSI Z89.1 Type I, Class E.
Footwear	Must be worn at all times. Must be ANSI Z89.1 Type I, Class E.
High-visibility clothing	Must be worn at all times. Must be ANSI Z89.1 Type I, Class E.
Additional safety requirements	Additional safety requirements may apply to specific tasks.

MITIGATE THE HAZARDS

All MBTA employees and contractors must follow the updated ROW PPE requirements. Failure to comply with these requirements may result in disciplinary action, including suspension or termination.

STOP

for more information

OPERATIONS SPECIAL ORDER 22-244

SPECIAL ORDER RULE

MINIMUM PPE AND REQUIRED ACCESS TO ROW

FEBRUARY 24, 2023

UNDERSTANDING THE HAZARDS

The MBTA Right-of-Way (ROW) Safety Flash is a critical tool for ensuring that all workers who work near the ROW are properly trained and equipped to work safely. This document provides a comprehensive overview of the hazards associated with working in the ROW and the PPE requirements that must be followed to ensure the safety of all workers.

WHOM IT AFFECTS

This affects any MBTA or contracted employees who work near the ROW.

ITEM	REQUIREMENTS
Hard Hat	Must be worn at all times. Must be ANSI Z89.1 Type I, Class E.
Hand Protection	Must be worn when working with tools, equipment, or materials. Must be ANSI Z89.1 Type I, Class E.
Eye Protection	Must be worn when working with tools, equipment, or materials. Must be ANSI Z89.1 Type I, Class E.
Footwear	Must be worn at all times. Must be ANSI Z89.1 Type I, Class E.
High-visibility clothing	Must be worn at all times. Must be ANSI Z89.1 Type I, Class E.
Additional safety requirements	Additional safety requirements may apply to specific tasks.

MITIGATE THE HAZARDS

All MBTA employees and contractors must follow the updated ROW PPE requirements. Failure to comply with these requirements may result in disciplinary action, including suspension or termination.

STOP

for more information

ROW PPE Requirements

ROW PPE REQUIREMENTS

SO# 22-244

[DETAIL >](#)

UNDERSTANDING THE HAZARDS

The MBTA Right of Way (ROW) poses many physical hazards for anyone who encounters it. Whether you are out on the ROW for operations, track maintenance and inspection, or incident response, you must follow the ROW Rulebook, Special Order 22-244, as well as any additional Rules and Procedures your department may require per job task.

HAZARDS:

- Electrical (3rd rail, cables)
- Mechanical (track switches)
- Tripping (running rails, cables, ballast)
- Vehicles/moving equipment
- Poor visibility
- Inclement weather conditions
- Busy shop areas, yards/garages

RISKS:

- Electric shock
- Struck by vehicle/equipment
- Caught in-or-between vehicles/equipment
- Slips/trips/falls
- Death
- Property damage

Search "PPE" on



T Safety | Issue: 23-03

[APPLICATION >](#)

WHOM IT AFFECTS

This affects any MBTA or contracted employees who work on or near the ROW.



PPE	MINIMUM REQUIRED PPE TYPE
Hard Hat	OSHA 1910.133, ANSI Z89.1 and NFPA 70E 130.7, Type I, Class E
Safety Eyeglasses	OSHA 1910.133 and ANSI Z87.1
Work boot	OSHA 1910.136, ASTM F 2412-18a & ASTM F 2413-18 Composite toe, EH-Electrical Hazard Resistant, PU-Puncture Resistant, Slip Resistant, 8-inch, Defined Heel
Upper Body Safety Retrosive Garment	ANSI 88EA 107 High visibility, yellow-green, retro reflective, Class 2, Type R, 5-point breakaway (vest only), "X" stripe pattern on back (MBTA requirement)
Lower Body Safety Garment	Full Length Pants (Cotton or Wool preferred)
ADDITIONAL MBTA REQUIREMENTS FOR ROW ACCESS	MINIMUM ROW ACCESS REQUIREMENTS
Right-of-Way (ROW) License	MBTA #300 (unexpired) ROW license on person employed and Contractor
Flashlight (hand held)	ANSI/IEA FL 1-2005 LED, Polypropylene industrial construction, 35 Lumens, 45 meters, 100 hours*, Impact & Water resistant
Waiver	High-impact plastic, sharp lead blade, >1200ft, 3100 foot/tons preferred

[HOW TO >](#)

MITIGATE THE HAZARDS

All MBTA employees and contractors must follow the updated rules and procedures regarding PPE usage on the ROW, as required by Special Order# 22-244.

Any employee who has questions about the new PPE requirements is encouraged to speak to their direct supervisor.

Contractors should speak with their assigned MBTA Liaison for specific PPE requirements of the permitted work to be completed before entering the MBTA ROW.



MBTA Safety Hotline : 617-222-SAFE or x7233

MBTA Upcoming Priorities

Cultivate ↔ A deep-seated SAFETY CULTURE.

Improve ↔ SERVICE across all lines.

Explore ↔ ALTERNATIVE CONSTRUCTION ACCESS times.

Hire ↔ More employees.

Upgrade ↔ EMPLOYEE WORKSPACES & RESTROOMS.

Strengthen ↔ QUALITY ASSURANCE program.



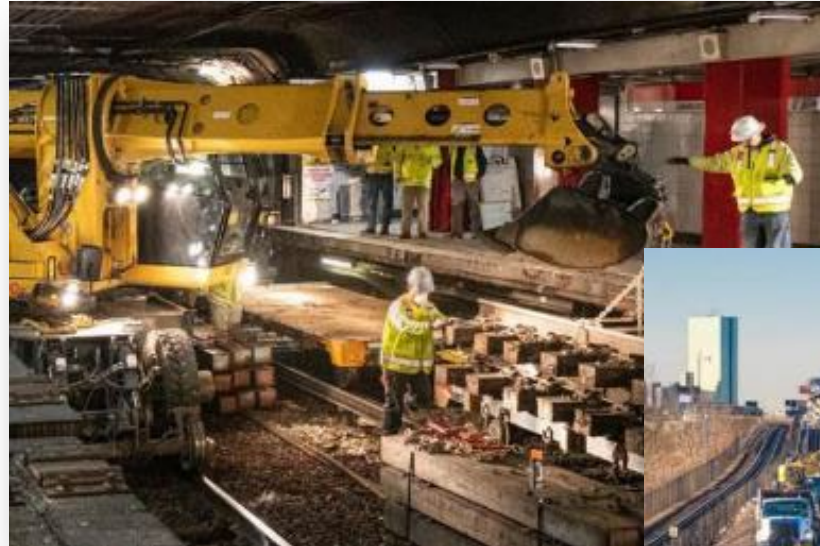
Opportunities for the ACEC Community

Contracting Opportunities

- Track Maintenance.
- Workforce to Support Operations & Capital.
- QCO Technical Support.

Changes in Programs & Procedures

- Safety Engineering & Certification.
- Contractor Oversight.
- Rules, Policies & Procedures.
- Quality Management.
- Asset Management.
- CIP Priorities.



We are in this together

The **safety** of MBTA customers, employees, and contractors is priority #1. A great deal of our Safety work requires aligning with our contractors. Regular communication is key to producing a safe, positive working environment that bolsters job satisfaction, retention and productivity.

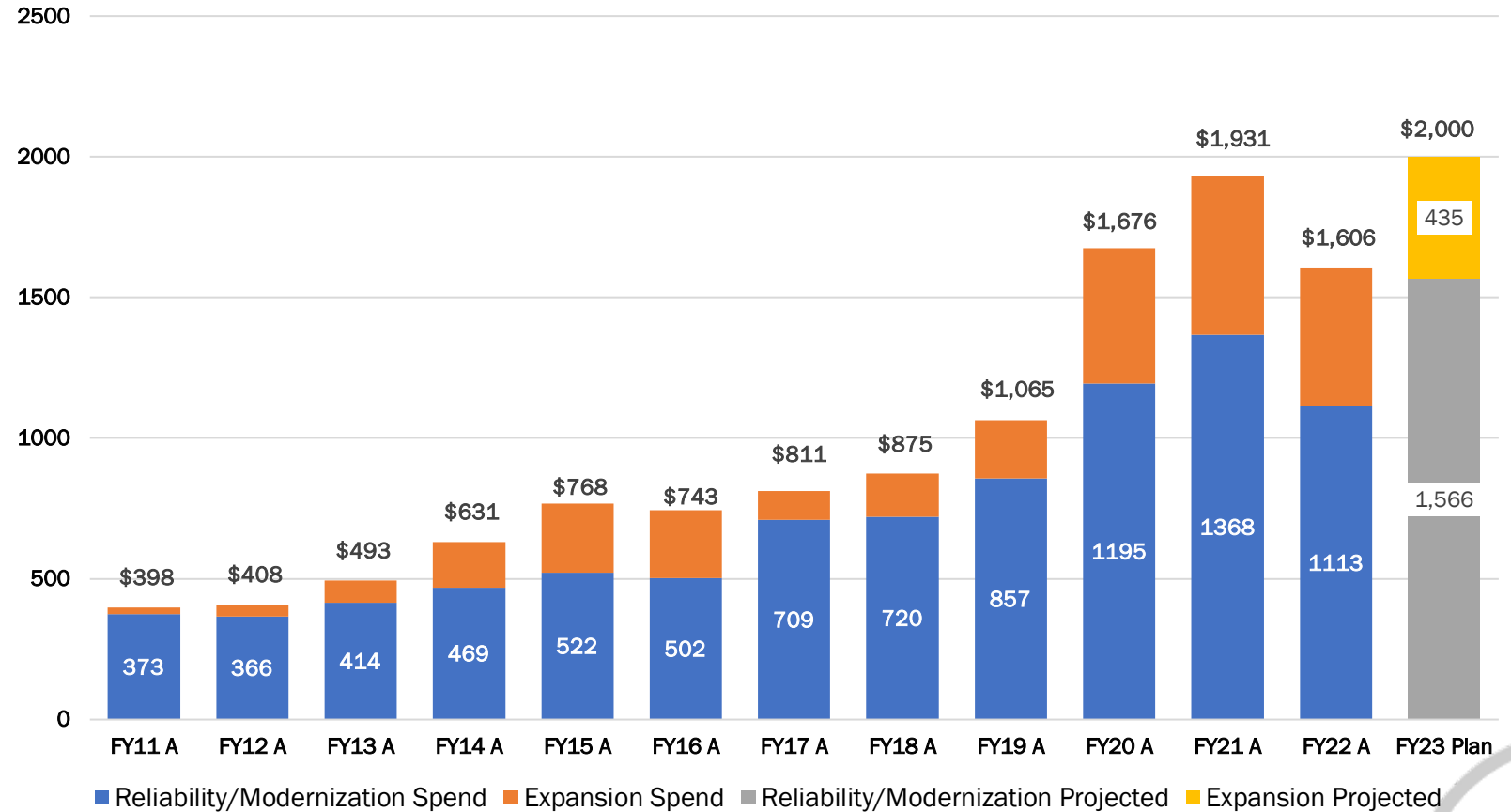


Recent Selections, Procurements in Process, Upcoming Procurements



MBTA Capital Investment by Fiscal Year

- For FY2022: The capital program delivered spend of \$1.6B, \$400M lower than the \$2.0B target.
- The spending goal for FY2023 is \$2.0B, with \$1,566M in Reliability/Modernization and \$435M in Expansion.



Recent Selections

Firm has been selected & contract process is underway

ASHMONT BRANCH TRACK RENEWAL 4 Years. Engaged in negotiations.

Design, bid phase, and construction phase services for track rehabilitation on the Ashmont Branch. The Scope of Service(s) may include but are not limited to: a rehabilitation of the existing track configuration, including the track design, special track work, civil, structural, traction power, communication, electrical, and environmental.

The HNTB Corporation

ARBORWAY BUS MAINTENANCE FACILITY 5 Years. Negations complete – awaiting BOD Approval of Award.

Soliciting 15% through 100% Design Phase, Bid Phase and Construction Phase Services for the Arborway Bus Maintenance Facility. Design a single, fully enclosed building to store and maintain approximately 200 40- and 60-foot battery electric buses.

Michael Baker International

BLUE HILL AVE TRANSIT CORRIDOR IMPROVEMENTS 4 Years. Engaged in negotiations.

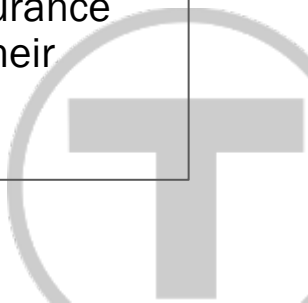
Design infrastructure improvements related to bus lanes and stations, bus stop accessibility, roadway and traffic signal engineering and general bus corridor improvements.

WSP USA, Inc.

SAFETY ASSURANCE SERVICES 6 Months. Awarded – Pre-Audit in progress.

Supplement MBTA Safety with supporting staff to assure full conformance during the performance of construction work with all applicable Federal, State and local labor, occupational safety and health laws and regulations. Develop the Safety Assurance Plan for Capital Program Construction in-flight projects and monitor the adherence by the contractors and workers to their approved safety plans.

Alternative and Renewable Construction, LLC



Recent Selections

Firm has been selected & contract process is underway

GEC for BUS INFRASTRUCTURE IMPROVEMENTS PROJECTS *3 Years. Contract Executed.*

Scope of Services includes but is not limited to designing infrastructure improvements related to Bus lanes, bus stop accessibility and general bus corridor improvements.

Howard Stein Hudson, McMahon Associates, Inc. and WSP USA, Inc.

MATTAPAN TRANSFORMATION *3-1/3 Years. Design and CPS Services Contract Executed.*

Provide planning, design, engineering, and construction phase services for the modernization of the Mattapan corridor. This will include establishing state of good repair, reliability and accessibility of vehicles, rail systems, track and right of way, structures, stations, and facilities that support the MBTA Red Line – Mattapan High Speed Line.

The HNTB Corporation

OL SOUTHWEST CORRIDOR MODERNIZATION *6 Years. Design and CPS Services. Contract Executed.*

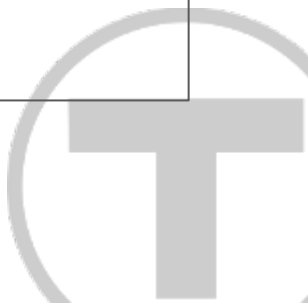
Provide design and engineering services for the modernization of the Orange Line Southwest Corridor to establish state of good repair, and reliability of the transit rail systems.

The HNTB Corporation

RED-BLUE CONNECTOR *3 Years. Contract Executed.*

Providing preliminary engineering and environmental review services. Project tasks may include preliminary engineering, an alternatives analysis and environmental review.

AECOM



Recent Selections

Firm has been selected & contract process is underway

CPA SERVICES 3 Years. Contract(s) Executed.

Perform Pre-Audit and Post-Audit evaluations of professional service contract, construction contracts and change order support.

Booth Management Consulting, Collen Donohue, CPA and Robert A. Passatempo, CPA

GEC for OWNERS REPRESENTATIVE SERVICES - TRANSIT & FACILITIES 5 Years. Contract(s) Executed.

Owner's Representative Services for Transit Stations and Facilities Projects.

Patrick Engineering Inc. and WSP USA Inc.

GEC for RELIABILITY & ENGINEERING 3 Years. Selections Complete. Initial negotiations underway.

Asset Management Implementation Support to further implement industry best practices as well as continual support for asset registry maturity and condition assessments as per FTA's Transit Asset Management (TAM) Final Rule.

HNTB Corporation, KPMG LLP, Network Rail Consulting, Inc., Patrick Engineering Inc., Reliance Engineers LLC, Turner & Townsend AMCL, Inc., and WSP USA Inc.



Procurements in Process

GEC for OCE/E&M 3 Years. Award package being prepared.

Provide “on call” tasks orders assigned under this GEC Contract that will provide the technical, strategic, engineering, design development.

AECOM Technical Services Inc., ARUP US, Inc., Hardesty & Hanover LLC, Hatch LTK, HDR Engineering Inc., HNTB Corp., Jacobs Engineering Group Inc., Mott MacDonald LLC, VHB Inc. and WSP USA Inc.

GEC TECH SUPPORT SERVICES for SYSTEMWIDE ACCESSABILITY 5 Years. Shortlist pkg being prepared

GEC services to provide advice, consultation and design to address routine and urgent accessibility related needs of the MBTA.

GEC-INSPECTION & RATING of EARTH RETAINING STRUCTURES 3 Years. Awarded. Contracts being prepared

In-depth routine inspection, special inspections, input of inspection data into the MBTA database system, submission of inspection reports with recommendations, ERS load rating calculations.

Collins Engineers, Inc. Reliance Engineers and WSP USA Inc.

GEC-INSPECTION & RATING of BRIDGES SYSTEMWIDE 5 Years. Award package being prepared.

Inspection and Load Rating of MBTA Bridges Systemwide, Commuter rail, transit (rail or roadway), pedestrian, highway bridges of various types including fixed span and movable span structures.

AECOM Technical Services, Inc., AI Engineers, Inc., Collins Engineers, Inc., Dewberry Engineers, Inc., Gill Engineering Associates, Inc., HDR, HNTB Corporation, Michael Baker International, Inc., STV Inc., TranSystems, VHB and WSP USA Inc.

GEC-RAILROAD OPERATIONS SUPPORT 3 Years. Advertised. SOQ DUE 4/19

Design and consulting services to address routine and urgent railroad operations need.

Procurements in Process

GAC for ARCHITECTURAL SERVICES 3 Years. RFP issued & Proposals due 4/4

architecture firms that are experienced in efficiently delivering small-scale facility design to provide General Architectural Consulting (GAC) Services to support the Office of the Chief Engineer.

GEC SYSTEMWIDE BRIDGE DESIGN & STRUCTURE DESIGN – OCE 5 Years. Awaiting Proposal Scoring

Design, engineering, and construction phase services for MBTA-owned bridges and other structures systemwide.

GEC SYSTEMWIDE URGENT STRUCTURE DESIGN – OCE 3 Years. Awaiting SOQ Scoring

Urgent inspection and design services for MBTA infrastructure systemwide.

GEC ENVIRONMENTAL CLIMATE CHANGE RESILIENCY 3 Years. Advertised. SOQs due 4/18/23

Multidiscipline engineering services (i.e. mechanical, electrical, energy, civil, etc.) to design climate change resiliency measures for physical infrastructure.

GEC INSPECTION & RATING of SYSTEMWIDE CULVERTS 4 Years. Advertised. SOQs due 4/17/23

Provide in-depth inspection of in-service culverts to ensure that all structures meet required safety standards and are in a state of good repair.



Upcoming Procurements (pg. 1 of 2)

Project details will be established upon receipt of the advertisement packages for each procurement.

- **GL VEHICLE MAINTENANCE FACILITY**

- ▶ *PM preparing advertisement package.*
- ▶ *Upgrade car house facilities at the Green Line Extension (GLX) Vehicle Maintenance Facility and the Riverside Vehicle Maintenance Facility, and to build and operate a new Vehicle Testing Facility at GLX.*

- **GL CENTRAL TUNNEL**

- ▶ *PM preparing for advertisement.*
- ▶ *Engineering, Architectural, and Design Consulting Services 30%- 100%, Bid Phase and Construction Phase Services for the Green Line Central Tunnel Track, Power and Signal Transformation Project.*

- **RAILROAD OPERATIONS ROCHESTER FACILITIES GEC**

- ▶ *Engineering Services to support Railroad Operations' Mechanical and Engineering Divisions for the Rochester Facility.*



Upcoming Procurements (pg. 2 of 2)

Project details will be established upon receipt of the advertisement packages for each procurement.

- **RAILROAD OPERATIONS FERRY SUPPORT SERVICES GEC**
 - ▶ *Transportation service and operations planning, new technologies, Commuter Boat service and all related planning, design and engineering services necessary to support the Railroad Operations and Commuter Boat Service, on an as-needed basis.*
- **RAILROAD OPERATION MECHANICAL GEC**
 - ▶ *Support Railroad Operations' Mechanical, Transportation/Customer Service, and Engineering Divisions.*
- **BILLERICA MOW REPAIR AND STORAGE**
 - ▶ *Design & Construction Phase Services for the new MOW Repair and Storage Facility.*
- **ENVIRONMENTAL MANAGEMENT & COMPLIANCE GEC SERVICES**
- **CAPITAL PROGRAMS GECs (BROOKS ACT & NON-BROOKS ACT)**



Current Initiatives

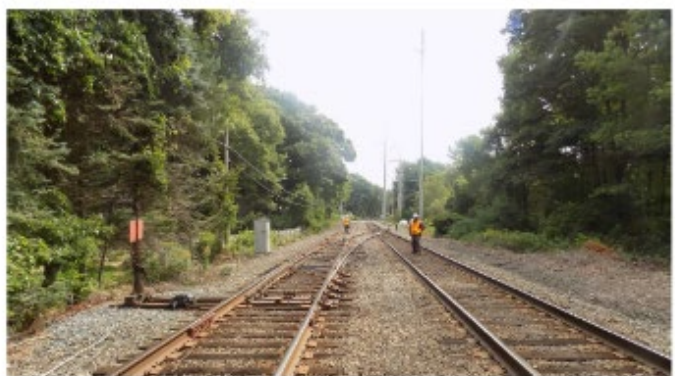


MBTA Commuter Rail Safety Directive



**Massachusetts Bay
Transportation Authority**

RAILROAD OPERATIONS DIRECTORATE



**MBTA COMMUTER RAIL
CONSTRUCTION SAFETY DIRECTIVE**



Massachusetts Governor
Raffi Hovsepian, Executive Director
Dan E. Frawley, Secretary & CEO
Walter Corbett, Acting General Manager

To: Capital Program Directors/Project Managers
Subject: MBTA Commuter Rail Safety Directive
Date: February 17, 2023

As you are aware the attached Commuter Rail Safety Directive has been issued by MBTA Railroad Operations and Commuter Rail Safety. This directive will impact all Capital Construction and Transit Oriented Development projects with work within or adjacent to the Commuter Rail Right-Of-Way.

- Impacts all **Capital Construction and Transit Oriented Development projects** with work within or adjacent to the **Commuter Rail Right-Of-Way.**
- Contains requirements that are in addition to the requirements currently outlined in the MBTA Specification 01568- “Construction Safety.”
- **Serves as the work directive to respective contractors immediately.**
- Contractors are required to **comply with all requirements as it relates to Commuter Rail Safety by March 7, 2023.**
- If there are cost and or time impacts associated with this Directive, then contractors need to submit a cost proposal in accordance with the MBTA Change Order Manual to the Authority within 30 days of the issuance of letter.



Recent Prompt Payment Training



- Under 49 CFR Part 26.29(a), MBTA is required to include a Prompt Payment clause in all federal contracts
- Under 49 CFR Part 26.37, MBTA must have appropriate mechanisms to ensure compliance with 49 CFR Part 26 requirements – including Prompt Payment
- Enforcement is expected since non-compliance with Prompt Payment is considered a breach of contract



- Questions re: Prompt Payment process – submit to promptpayment@mbta.com
- A Prompt Payment help center - @ mbta.com/DBE
 - ▶ the current versions of the forms, ▶ instruction sheets, ▶ Training video, ▶ FAQs.
- An email address to submit your forms will be provided by the MBTA project staff for your project.



Responsible
Party

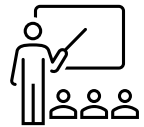
- Any recipient of Federal funding: Transit Agencies, State DOTs, Subrecipients, other federal grants.
- Prime contractors, Developers on Private Public Partnerships, Design-Builders, any awardee of the federally-funded project(s).
- Subcontractors, subconsultants, suppliers, fabricators, truckers, any firm associated with a federally-funded contract at any tier of subcontracting. (e.g., 1st, 2nd, 3rd, 4th tier).



Dual MBTA / ACEC Initiatives



DBE outreach programs with ACEC's DBE Task Force planned May 5, 2023



This past year the MBTA met with the ACEC Task Force to discuss the DBE Program and GFEs, PS Scope and Compensation Matrix; Sworn Statements, Prompt Pay, Engineer's Estimates and MBTA Policy on Annual Salary Increases. We will continue conversations on these topics and others as they arise.



MBTA Chief of Capital Programs, Scott Bosworth will be attending an upcoming ACEC TALC meeting.



Thank you!

