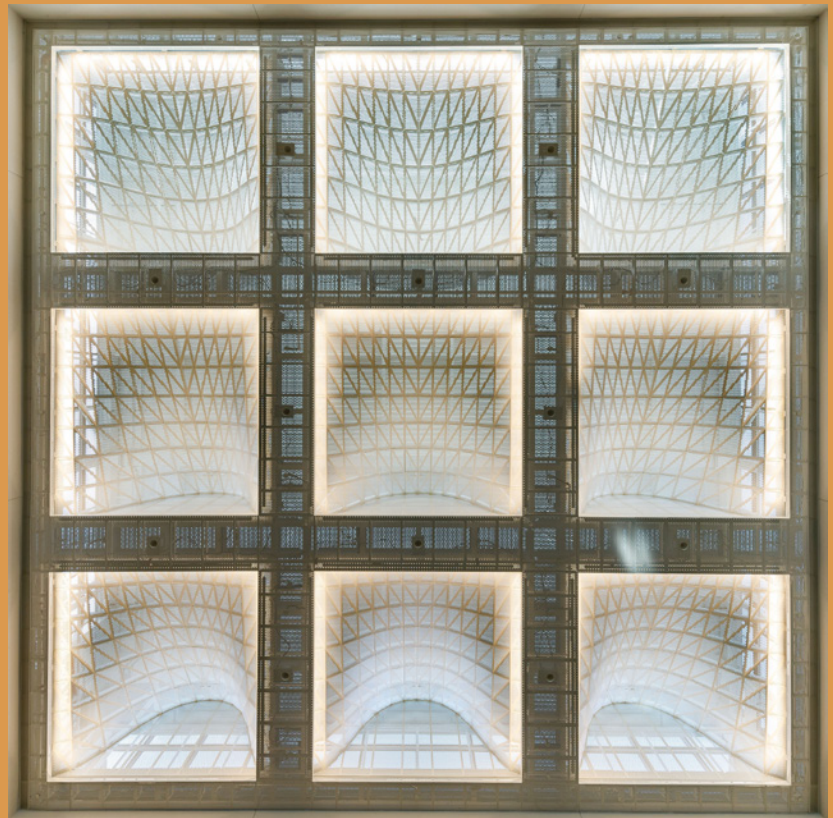


TAYLOR & BURNS

architects

Qualifications

21 June 2022





BACKGROUND

Robert Taylor and Carol Burns have worked together since 1980 as partners and as colleagues at the Yale School of Architecture. In 1993 they founded Taylor & Burns Architects and for three decades have overseen the firm's growth and development. A close knit team, we are agile, responsive, and thoughtful about cultivating relationships between people and places. Growing and evolving together, Taylor & Burns Architects has an appetite for projects of consequence unbound by type or use program.

CORE VALUES AND MISSION

Taylor & Burns Architects specializes in working with mission-driven groups who want to change the built environment as a means to reach their next level of excellence. Seeing architecture as the art of constructing meaningful buildings and places within practical limits, we design structures expressing ideas and values that resonate with the groups they shelter. People for whom we design are represented in buildings alive with ideas about their culture and community, built to be accessible, durable, resourceful, and sustainable.

LOCATION AND REGISTRATION

Located in Boston, we work throughout New England and across the country. We are licensed architects registered in Massachusetts, New York, Connecticut, Rhode Island, and Vermont. With NCARB certification, we can practice in any state nationwide.

SERVICES

As full-service architects, our agility, attention to detail, and careful documentation lead to quality in craft and value in construction. We provide the following in-house services:

- Building Design, Programming, Construction Documentation, and Construction Administration
- Site Evaluation and Site Planning
- Campus and Master Planning
- Feasibility and Strategy Studies
- Survey, Analysis, and Report on Existing Buildings
- Renovation and Rehabilitation Design
- Interior Design, Space Planning, Tenant Fitout
- Built-In Furniture Design, Fabrication Drawings
- Parametric Building Information Modeling
- Architectural Rendering and Visualization
- Project Information Management
- Sustainable and Resilient Design, including LEED project certification

DBE / WBE

Taylor & Burns Architects is certified as a disadvantaged business enterprise and a woman's business enterprise (DBE, WBE) by the U.S. Department of Transportation, the Small Business Administration, the Commonwealth of Massachusetts, and the City of Boston.

COMPANY DATA

NAICS Code:	541310
Unique Identity ID:	Active
Business Size:	Small Business

COTACT PERSON

Carol Burns, FAIA	
Work:	617-357-5335
Email:	cb@taylorburns.com

Massachusetts Bay Transportation Authority Rapid Transit/Key Bus Routes Map



Legend

RL RED LINE	SL SILVER LINE and branches	SL1 SL2 SL3 SL4 SL5	COMMUTER RAIL	Accessible station All MBTA and Massport bus and ferry services are accessible	Free Logan Airport shuttle bus	/TheMBTA @TheMBTA @MBTA /MBTAGM	Customer Communications & Travel Info 617-222-3200, 800-392-6100, TTY 617-222-5146, www.mbtat.com
M MATTAPAN LINE	GL GREEN LINE and branches	GL1 GL2 GL3 GL4 GL5	KEY BUS ROUTE Frequent service	Rapid Transit transfer station	Amtrak service Back Bay North & South Stations	MBTA Transit Police: 911 TTY 617-222-1200	Elevator/escalator/lift updates: 800-392-6100
OL ORANGE LINE	Terminates at Park St	Terminates at Gov't Center	FERRY	Commuter Rail transfer station			
BL BLUE LINE	Terminates at N. Station	Terminates at Lechmere	*Boylston: Accessible for Silver Line only				

© June 2020 v.34a

Staff members of Taylor & Burns Architects are familiar with all stations on the heavy rail, light rail, and commuter rail systems, based on project experience providing station design as well as inventory and safety assessments.

History of Projects with Massachusetts Bay Transportation Authority - MBTA

Project Description	New Renovation Study	Status: Phase or Date Complete	Construction Cost
------------------------	----------------------------	--------------------------------------	----------------------

MBTA On-Call Services*Subconsultant to Simpson Gumpertz & Heger*

Charlestown Bus Facility Building Envelope Study	S	underway	Not Available NA
Commuter Rail Safety Study	S	underway	NA
Stair Inventory	S	underway	NA
Everett Building 3 Office Renovations	R	underway	NA
Safety Assets: Transportation Infrastructure Assessment	S	underway	NA
Iron Horse Park Operations Control Center New 22,0500 sf public safety facility	N	close-out	\$ 32.8 M est.
Ashmont Station Platform Modifications	S	2018	NA
Lynn Central Square Garage			
North Shore Community College Tenant Fit-Out	R	2017	\$ 833,000
Garage and Platform Study	S	2016	\$ 44 M est.
Sullivan Square Station Brightening and Architectural Upgrades	R	on hold	\$ 9.5 M est.

MBTA On-Call Services*Subconsultant to Jacobs Engineering*

Charles/MGH Station New West Headhouse	R	underway	\$ 21 M est.
Charlestown Building 3 Renovations	R	underway	NA

MBTA Newton Highlands Green Line Accessibility Improvements*Subconsultant to Nitsch Engineering*

Accessibility Improvements including ramps and canopies	R	CD's underway	\$ 16.9 M est.
---	---	---------------	----------------

MBTA Blue Line Wayfinding*Subconsultant to PMA Consultants*

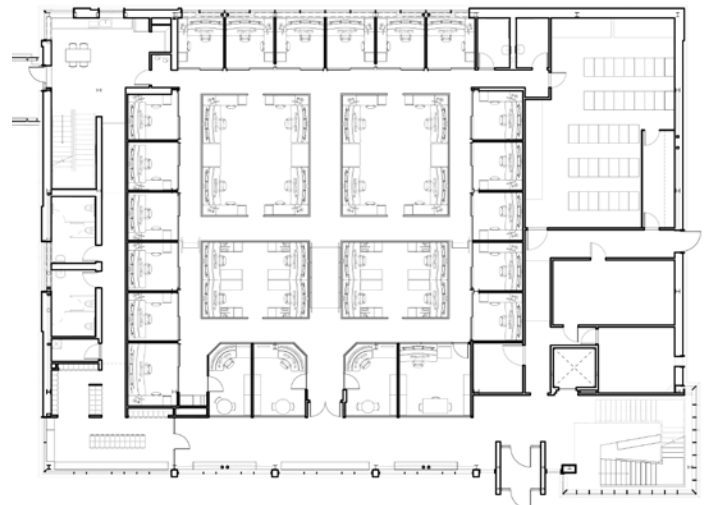
Wayfinding improvements at nine stations on the Blue Line	S	on COVID hold	NA
---	---	---------------	----



Under Construction
Steel Frame, Weathering steel rainscreen, Specialty perforated ceiling
22,000 gsf New Construction



A technology-rich rail traffic control center, Iron Horse is one hub of the nation-wide positive train control system mandated by Congress, designed to control all rail north of Boston. Named for the historic Boston & Maine RR train assembly yard where it will be located, the Iron Horse design is organized around a 3-shift, 24x7 operations control room that combines enclosed dispatcher offices and a “bullpen” of open-office dispatchers, all with views to a big screen. In response to dispatcher request to sense the natural passage from day to night, the room is top-lit with diffused, glare-free natural light. The building will be clad in maintenance-free weathering steel, celebrating the history and name of the site. Taylor & Burns provided full architectural services to engineer of record, Simpson Gumpertz & Heger.



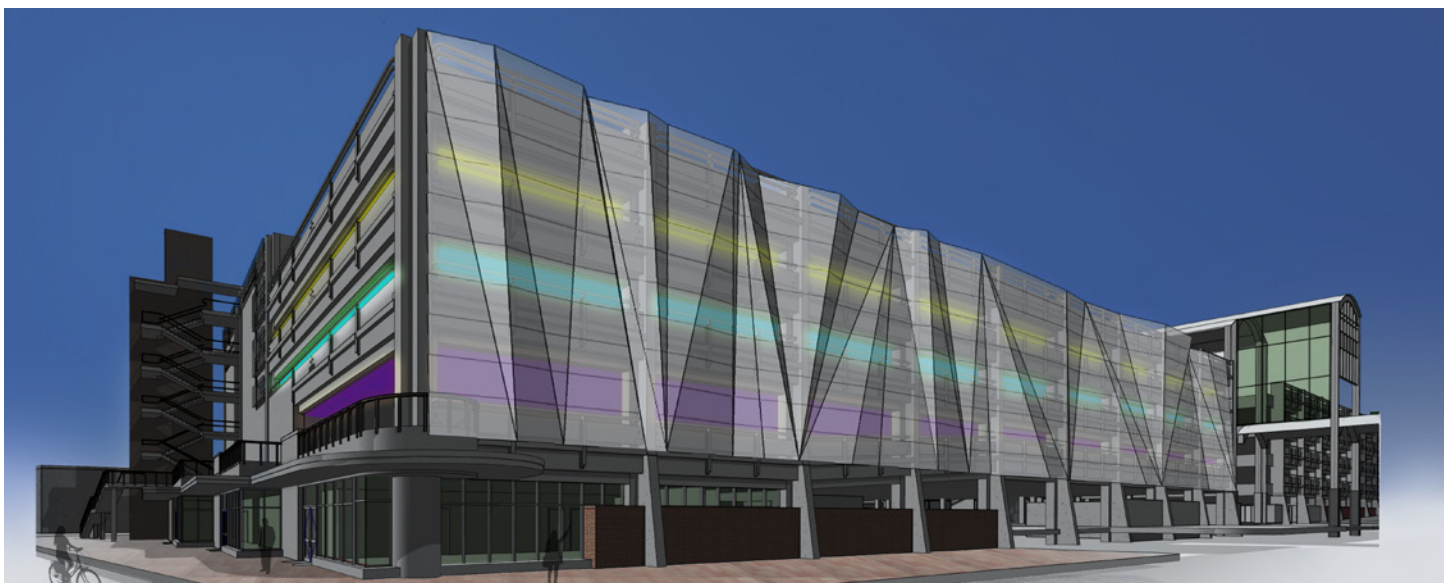


Design 2018 / Construction Expected 2024
Steel Frame and Metal Roof

Newton Highlands Station is a historically protected structure designed by H.H. Richardson in collaboration with landscape architect Frederick Law Olmsted built in the 1880s. The MBTA is providing accessibility at the station in compliance with current State and Federal regulations. The design includes:

- Three new accessible paths and ramps with covered canopies from each of the surrounding streets
 - Newly-configured platforms to accommodate new Type 10 MBTA train vehicles
 - New automatic fare collection equipment, station lighting, and wayfinding signage
 - New shelters and various station amenities
- Ramp and canopy geometries are designed to navigate smoothly through the landscape while preserving it.

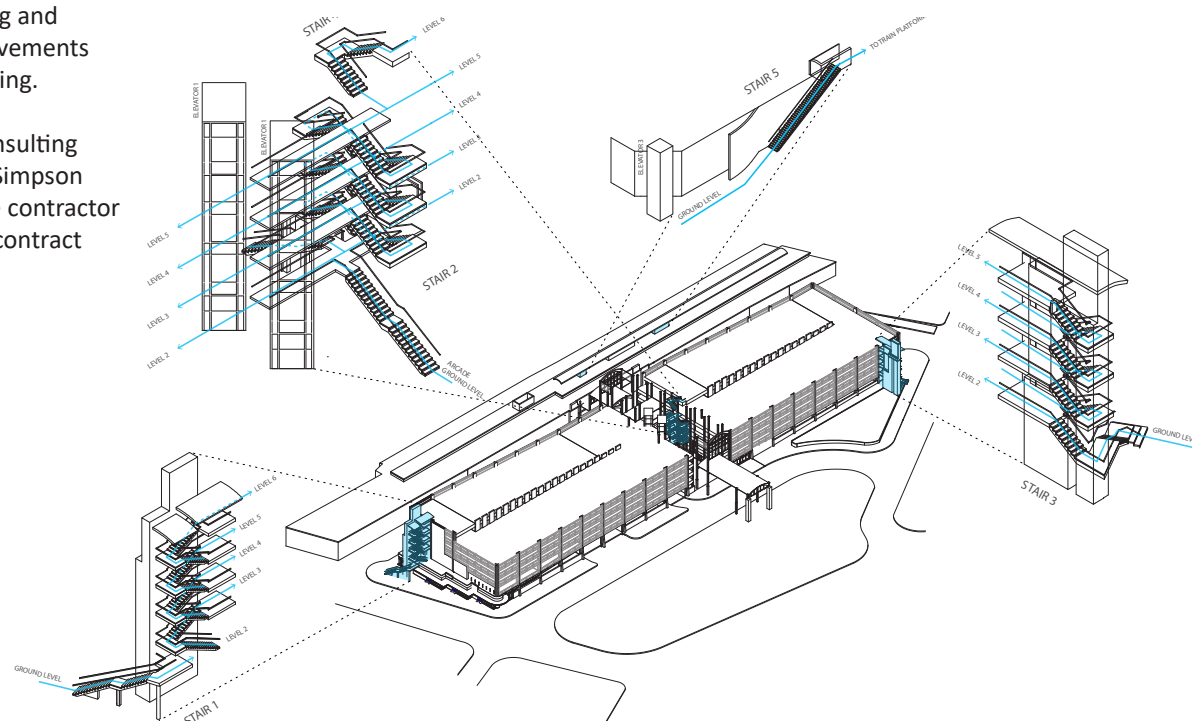
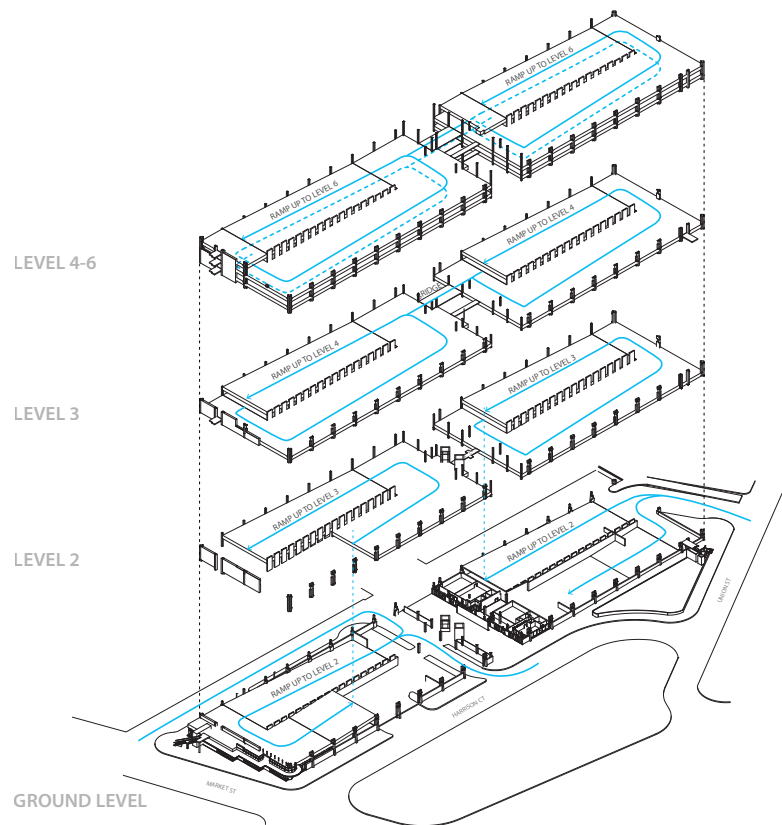


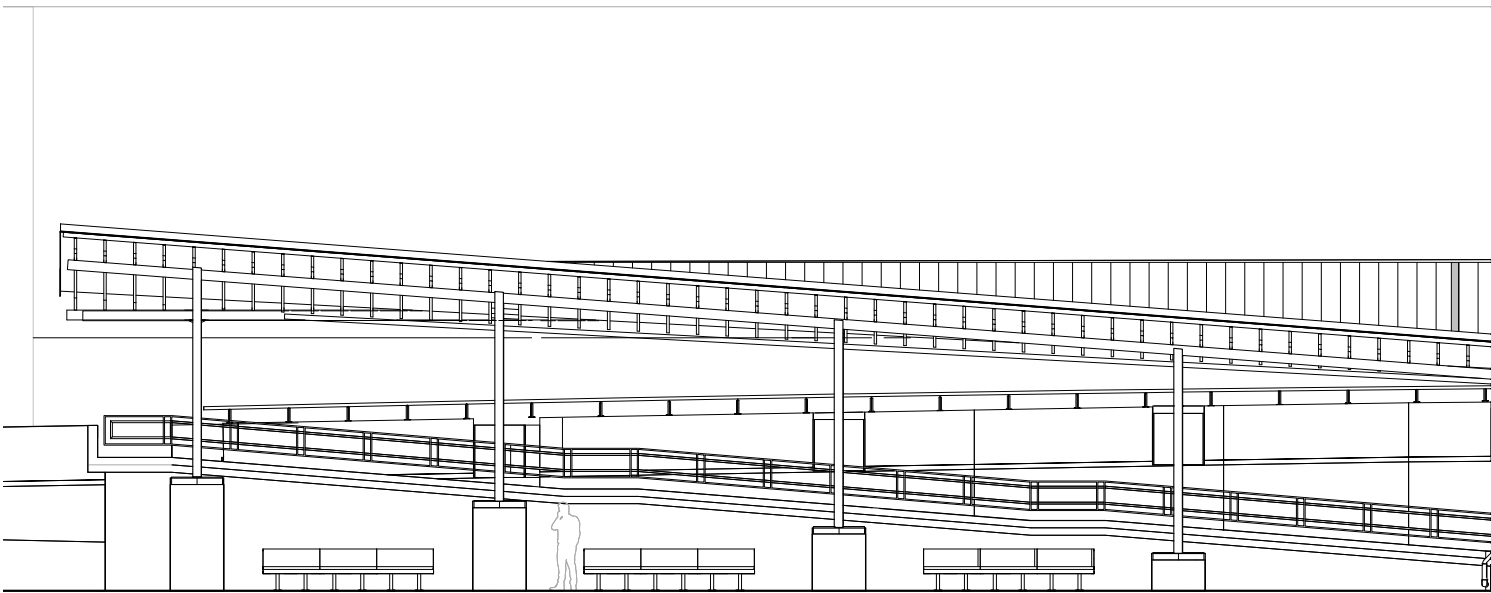


The study focuses on improvements to the MBTA Lynn Central Square intermodal transit center which occupies a four-block parcel in the downtown core of Lynn, a site that has provided train service since 1838. The 376,000 square foot complex consists of four main components: train station platform, parking garage, busway area, and enclosed tenant spaces currently occupied by North Shore Community College. The study describes existing conditions and makes evaluations and recommendations for repairs, replacement of materials at the end of useful life, and code upgrades.

Tenant Fit-out for North Shore Community College, a “summer slammer,” selectively upgrades 10,000 sf of interior finishes and systems within the transit hub, without triggering schedule-crushing and budget-busting code improvements throughout the larger building.

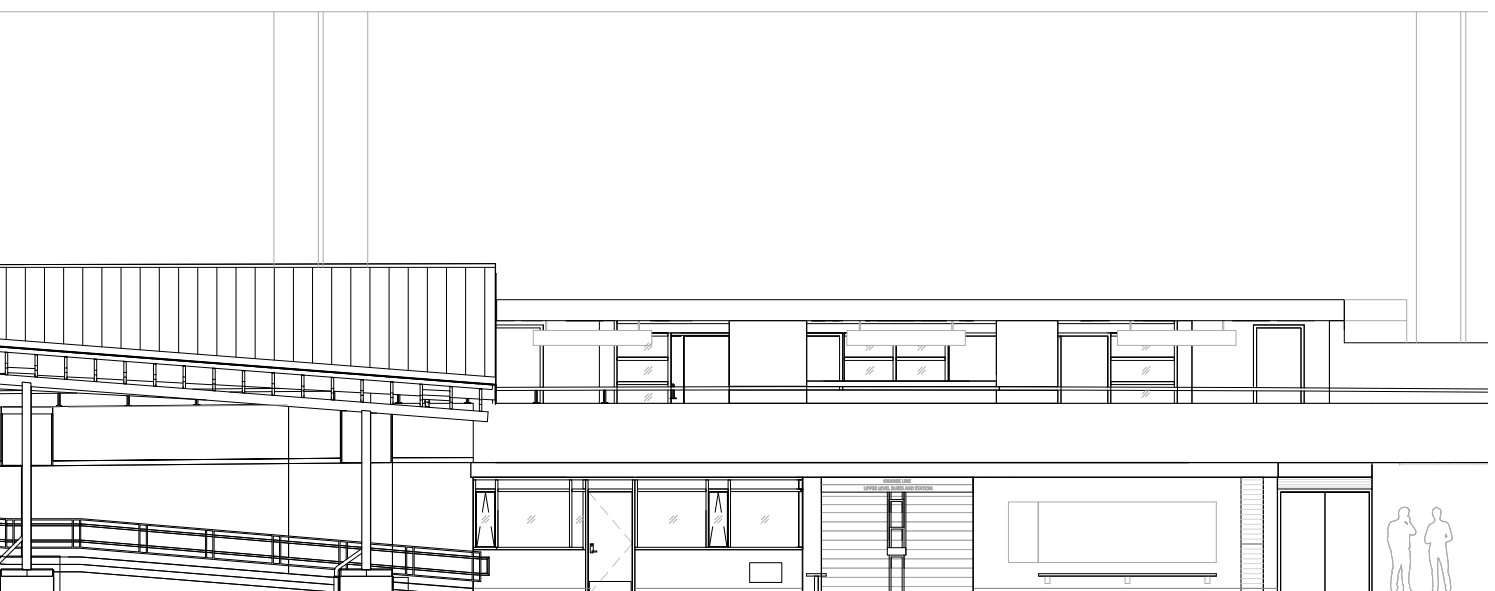
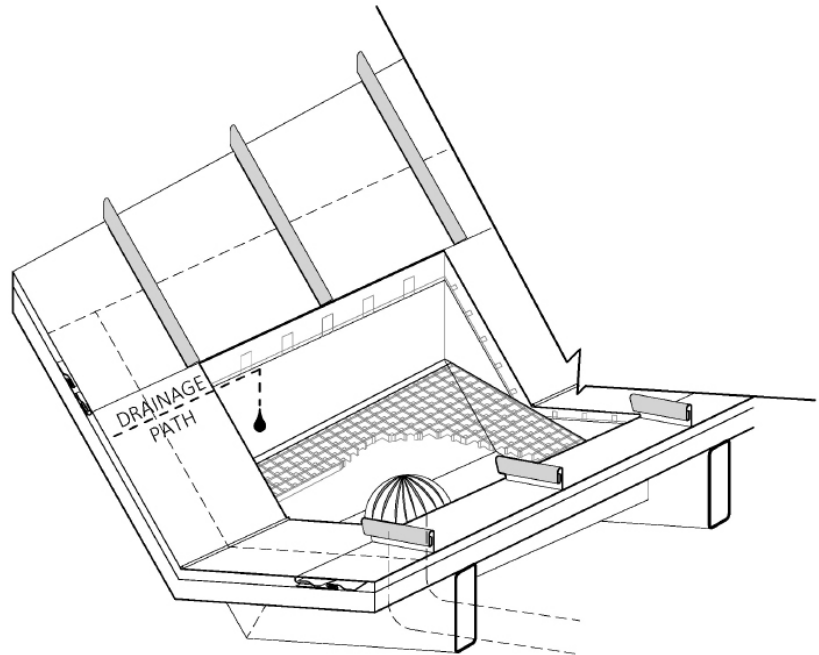
Taylor & Burns provides consulting services for this project to Simpson Gumpertz Heger as a prime contractor for on-call “house doctor” contract with the MBTA.

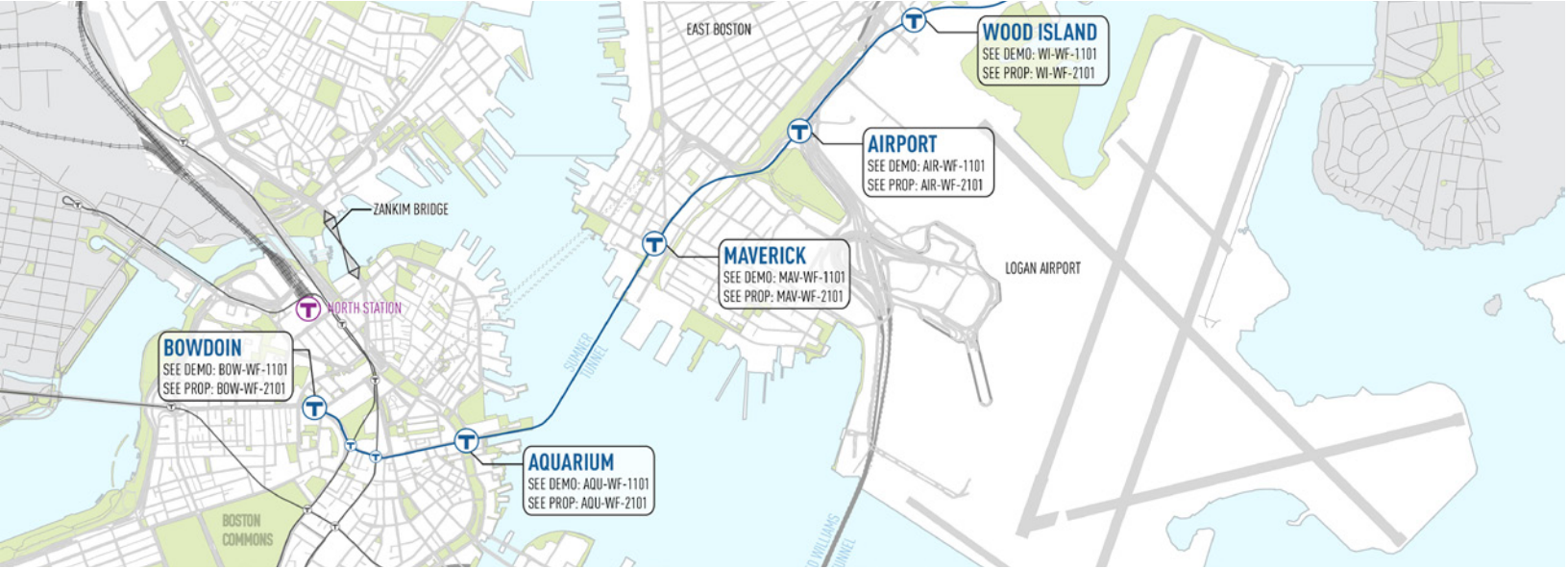




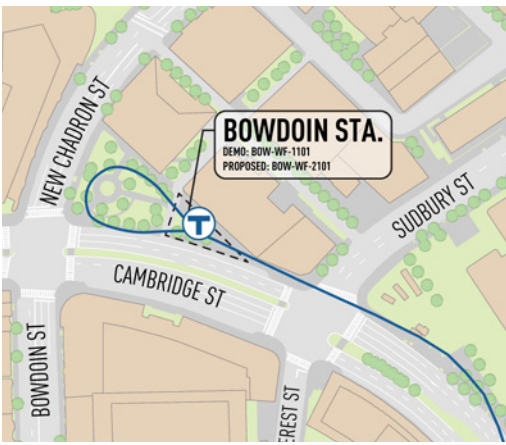
Construction: Underway

The MBTA Sullivan Square Station Brightening and Architectural Upgrades focuses on renovating the existing busway, bus drivers lounge, lobby, restrooms, and platforms to improve the safety and appearance of the station. The scope of work includes the addition of a new canopy over the ramp in the busway, replacing the windows in the bus drivers lounge, replacing the railings and stair treads throughout the station, painting the station, repairing multiple concrete spalls on and above the platform, and replacing the lighting to bring the station up to current MBTA standards.





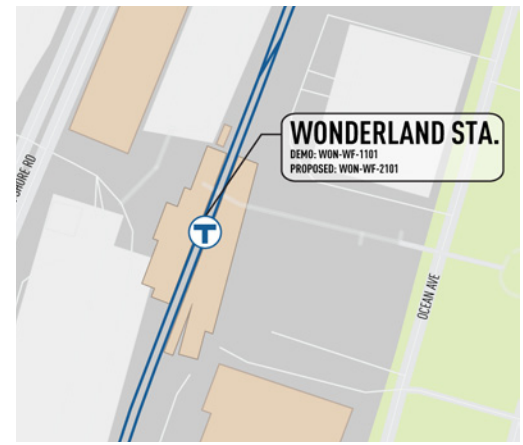
Blue Line Systemwide Keyplan



Bowdoin Station Locus Plan



Airport Station Locus Plan



Wonderland Station Locus Plan



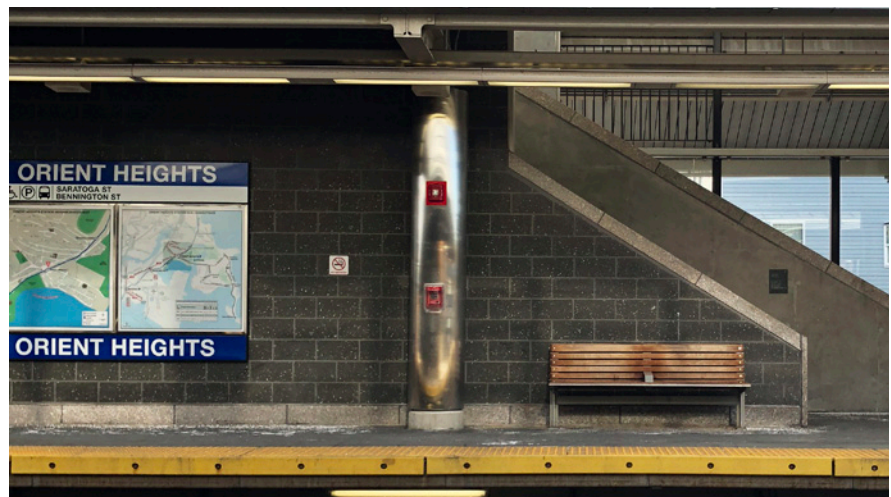
Illuminated Wayfinding and Signage

953 Signs, 9 Stations: Bowdoin, Aquarium, Maverick, Airport, Wood Island, Suffolk Downs, Beachmont, Revere Beach, Wonderland



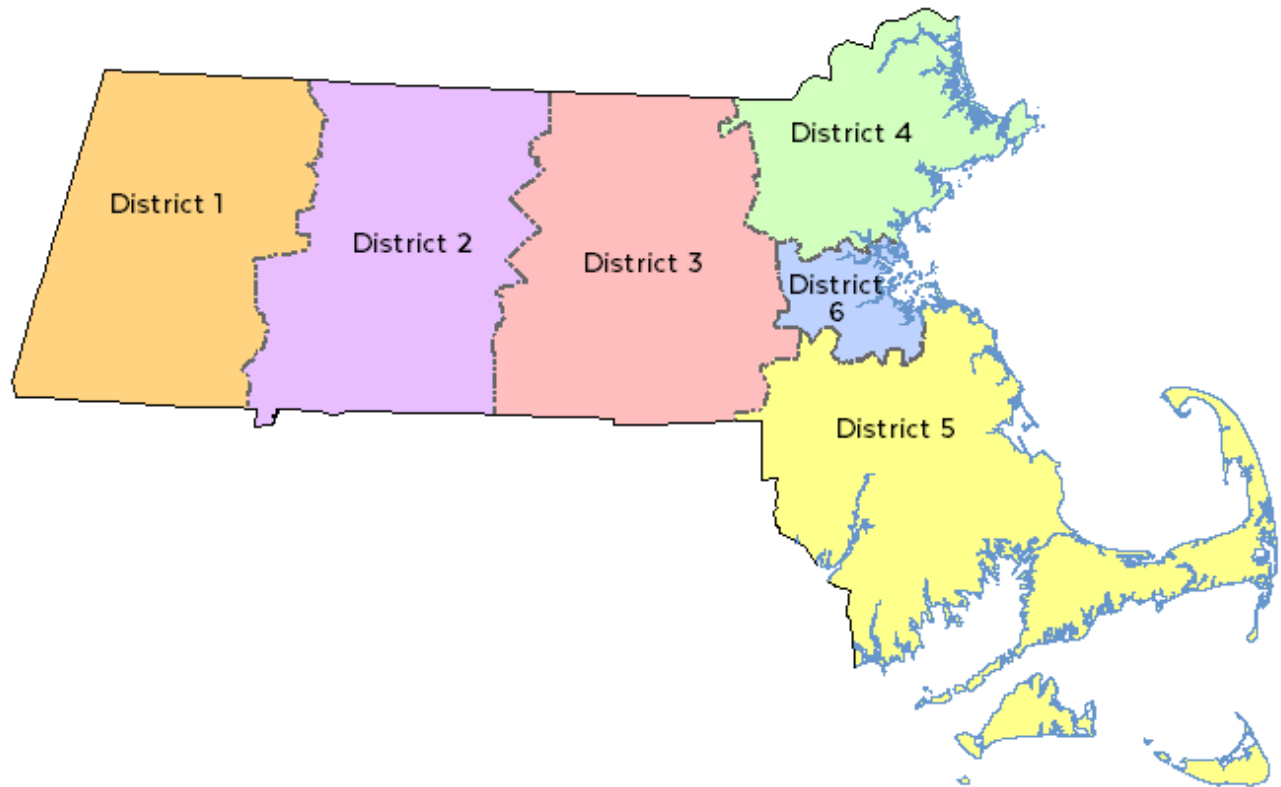
Wood Island Station Entrance and Busway

The MBTA Blue Line, a heavy rail rapid transit line active since 1924 and extended in the 1950's, connects downtown Boston and the North Shore beaches in Revere. As part of a systemwide initiative, Taylor & Burns provides design services to improve wayfinding, branding, and graphic standards at nine stations along the six-mile track. While documenting existing wayfinding and signage assets, Taylor & Burns has also reviewed public safety conditions, offering recommendations for repairs. This project is on hold due to COVID 19.



Typical Station Wayfinding and Locus Map

MassDOT Highway Districts



Taylor & Burns Architects is familiar with people and processes at MassDOT, both statewide as well as District offices.

History of Projects with MassDOT Highway Division

Project Description	New Renovation Study	Status: Phase or Date Complete	Construction Cost
<u>MassDOT On-Call Services</u>			
Greenway Maintenance Facility New facility on the Rose Kennedy Greenway	N	CDs complete	\$ 4.996 M est.
Highway Maintenance Facility, Billerica New facility with multiple structures including storage barn for salt, maintenance garage, staff office	N	2017	\$ 4.973 M
Highway District 6 Headquarters 185 Kneeland Street Renovations, Boston Renovations and tenant fit-out for ten-story high-rise building	R	2017	\$ 10.062 M
Highway District 6 Headquarters Elevator Modernization 185 Kneeland Street, Boston, MA Modernization of three elevators, in three phases	R	2017	\$ 1.273 M
Highway Maintenance Facility, Andover New facility with multiple structures including storage barn for salt, maintenance garage, staff office LEED certified	N	2015	\$ 4.691 M
Highway Maintenance Facility, Braintree New facility with multiple structures including storage barn for salt, maintenance garage, staff office	N	2014	\$ 3.410 M
Highway Sign Shop, Braintree New 26,000 sf facility with three shops to produce highways signs	N	on hold	\$ 10.7 M est.
MassDOT Studies			
Central Maintenance and Highway Operations Facility Studies, Milton and Boston	S	2013, 2014, 2016	
Highway Maintenance Facility Study, Bedford	S	2014	
Rose Kennedy Greenway Maintenance Facility Study, Boston	S	2013	
Satellite Maintenance Facility Study, Charlestown	S	2013	
Highway Maintenance Facility Study, Peabody	S	2010	



Design 2011/2012
Construction 2012
100,000 sf renovation
10 story steel structure



A ten story building in downtown Boston is undergoing complete interior renovation to create new workspace for MassDOT agencies charged with building and maintaining public infrastructure: the Massachusetts Highway Department, and the Greenway Conservancy.

Open planning, low panel systems furnishings, and glass-fronted private offices array to maximize daylight and transparency, and to create team workspace fostering collaboration. Large scale project graphics and models feature prominently throughout the building to promote the mission of infrastructure stewardship among these agency's staffs, largely comprised of design and construction professionals.

The renovations also incorporate sustainable materials, energy efficiency strategies in all building systems, as well as comprehensive code compliance for accessibility and life safety.





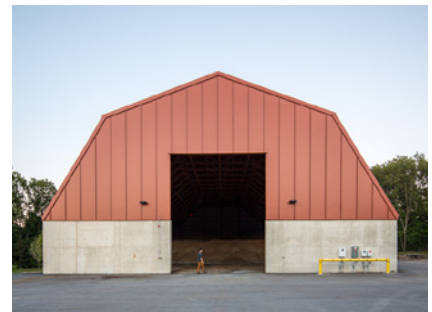
A new highway maintenance facility, located in an I-93 cloverleaf, provides a maintenance building with 813 sf of office space, restrooms, breakrooms, a two-bay garage of 1,441 sf and an unenclosed breezeway. In addition, an unconditioned salt barn of 9,185 sf and a 963 sf unenclosed shed are part of the project, along with storage space for liquid de-icing and anti-icing agents.

Taylor & Burns Architects, providing full A&E services for all phases, made successful presentations in a public process including State Senator Barry Feingold to garner support from abutting business owners.

The facility is Mass DOT's first LEED-certified project.

Sustainable design features include:

- Salt barn oriented with large roof area maximizing effectiveness of PVC array
- Minimized project size and minimized areas of conditioned space
- High insulation values
- Occupancy sensors, low voltage switching
- Daylight harvesting



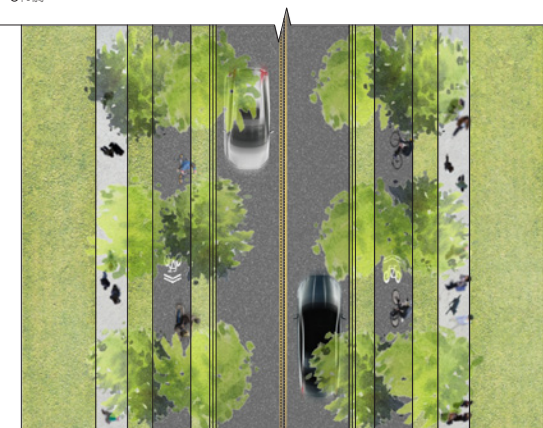
TAYLOR & BURNS

architects

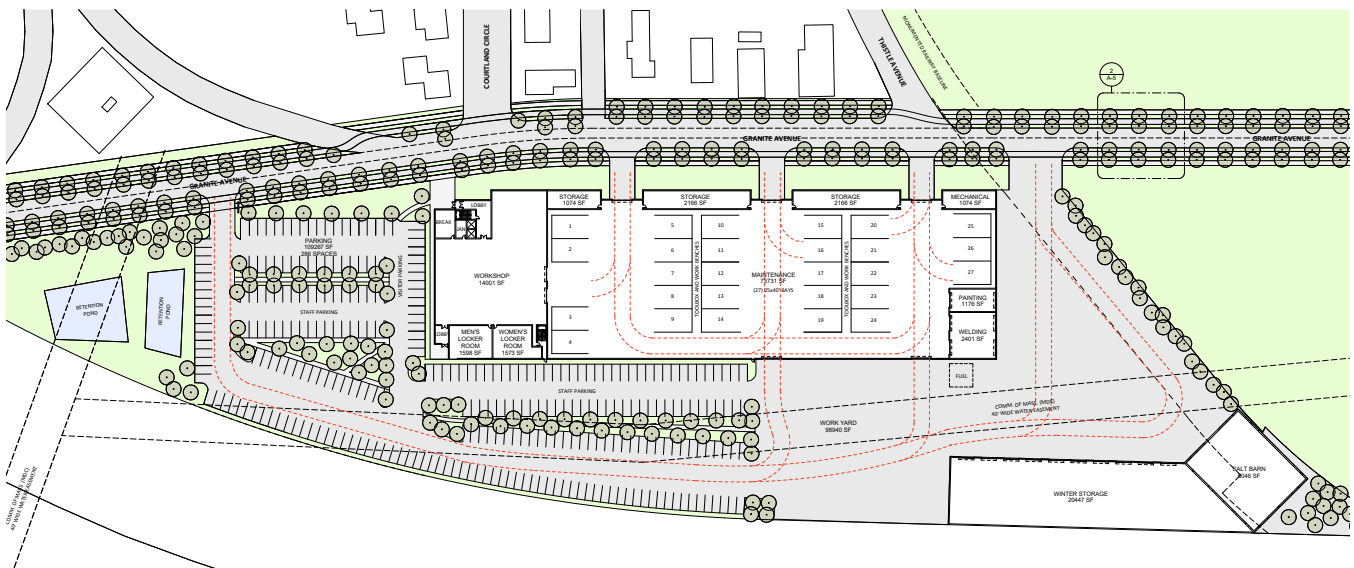
MassDOT On-Call Services Andover Highway Maintenance Facility
Andover, Massachusetts

Design/Construction 2012/2015
Pre-engineered wood frame; metal panel exterior
14,000 sf new construction





Massachusetts DOT On-Call Services Milton CMF-HOC Studies consists of a series of high-level master plan studies over several years, MassDOT Highway Division explores relocating several key operations: the Central Maintenance Facility (CMF) currently located on D Street in South Boston; the Highway Operations Center (HOC) currently located at 50 MassPort Haul Road; Division 6 Headquarters currently at 185 Kneeland Street, Boston; and a new Salt Depot. Three potential sites have been studied: Conley Access Road, South Boston; Cypher Street, South Boston; and Granite Avenue, Milton.





Design/Construction 2012/2015

Pre-engineered wood frame; metal panel exterior

8,000 sf new construction

Highway Maintenance Depot

Located near the "Braintree Split," this facility gathers various district needs under one roof:

- 5000 tons of salt storage
- Drive-through loading lane
- Offices, restroom, break room
- Covered parking

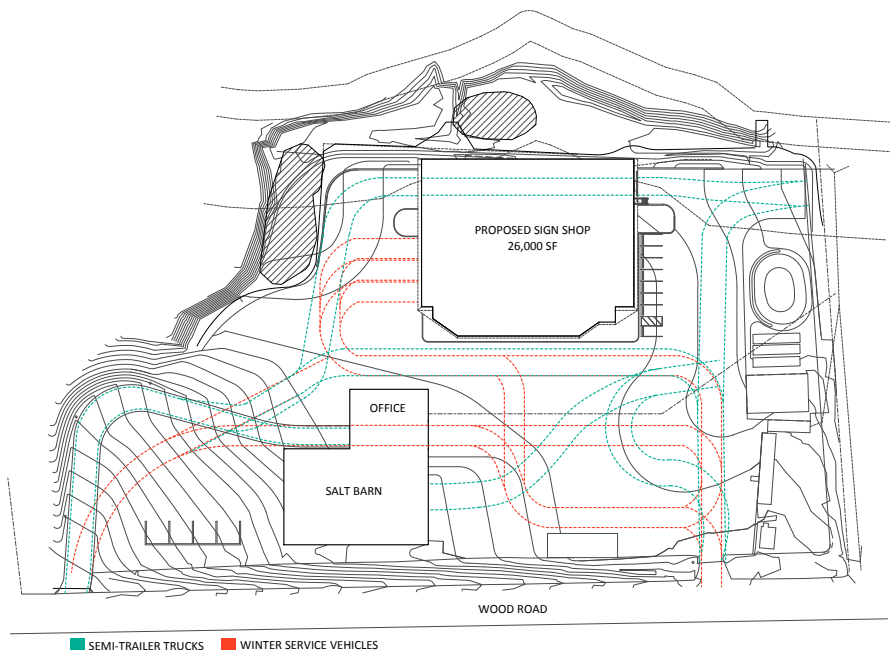
The construction innovates with wide-span prefabricated trusses, daylighting, super-insulating metal panels, and efficient fixtures throughout.

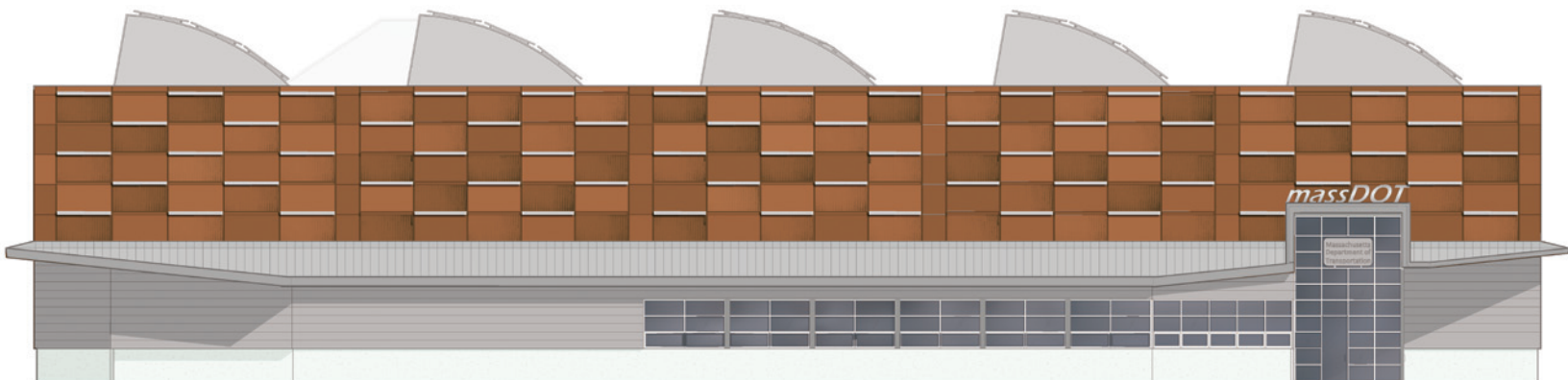
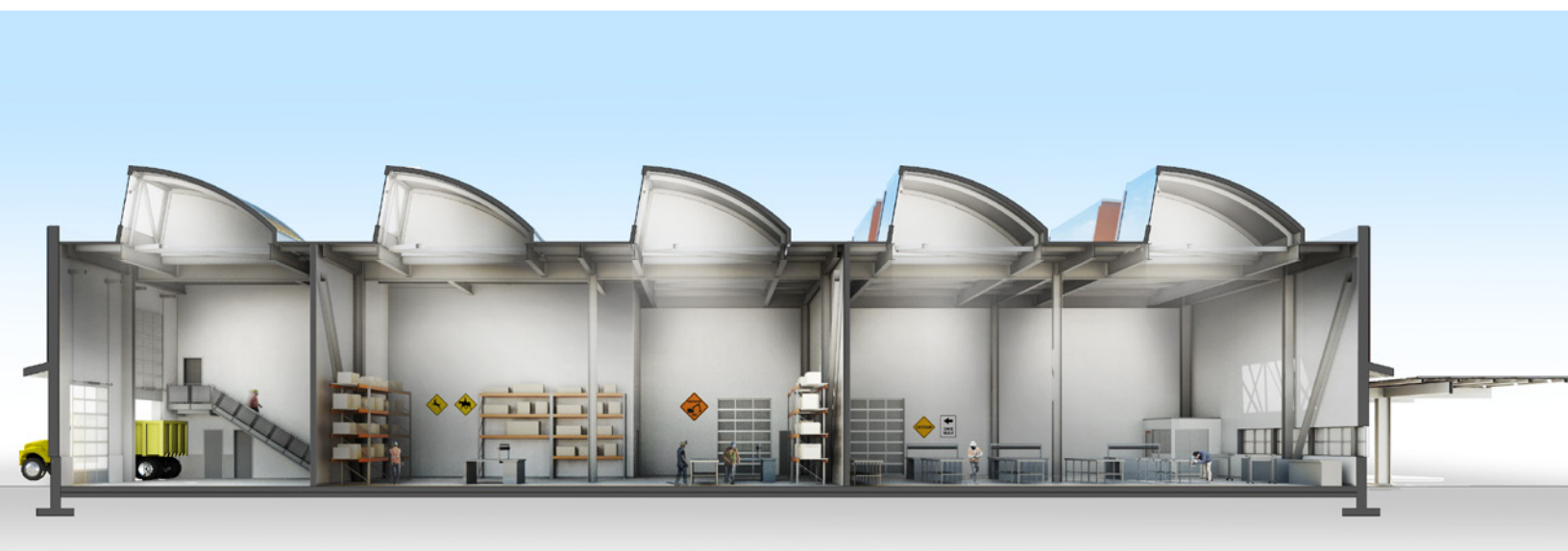


Mass DOT Sign Shop

This road sign production shop consolidates currently-scattered facilities into a structure with 26,000 sf on one floor. It provides: 3 sign production areas; loading dock for roll-off delivery by fork lifts; hoisting gantry; drive-in paint bay; staff offices; conference/break room; men's and women's toilet and locker rooms; reception area; indoor and outdoor parking. Taylor & Burns Architects is providing full A&E services for all phases including LEED accreditation.

These two projects together demonstrate integration of office and operations facilities in an attractive compound that enhances its context.





This production shop consolidates currently-scattered facilities onto one site. Located adjacent to existing MassDOT facilities, the site design accommodates pre-existing traffic flows and large vehicles. The structure's open floor plan allows flexible arrangements of shop equipment as well as forklift access to high storage racks. Scoop skylights provide full-spectrum daylighting and minimize energy costs. The exterior features a metal rainscreen in terracotta color to match the existing MassDOT facilities on site. This project is designed to achieve LEED Silver certification.



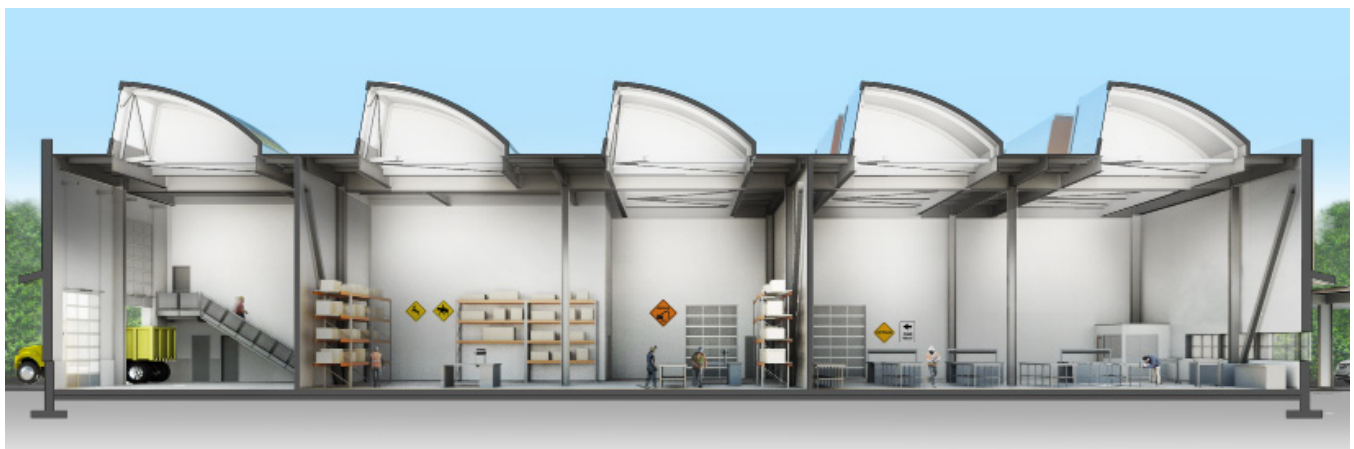
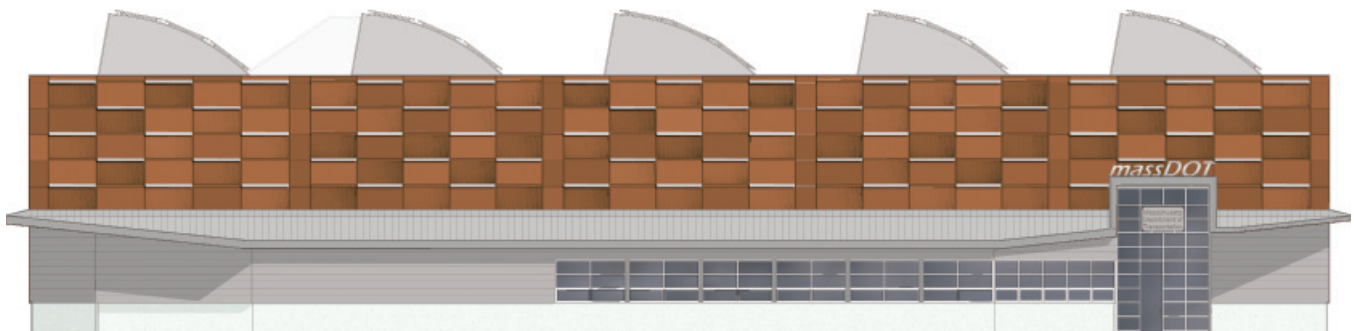


Design / Construction 2015 / On-Hold
Metal Panel Exterior and Scoop Skylights
25,302 sf New Construction

This production shop consolidates currently-scattered facilities onto one site. Located adjacent to existing MassDOT facilities, the site design accommodates pre-existing traffic flows and large vehicles. The structure's open floor plan allows flexible arrangements of shop equipment as well as forklift access to high storage racks. Scoop skylights provide full-spectrum daylighting and minimize energy costs.

The exterior features a metal rain-screen in terracotta color to match the existing MassDOT facilities on site. This project is designed to achieve LEED Silver certification.

New 25,302 gsf one-story structure
Sign production shop areas with support equipment including loading dock for roll-off delivery, gantry hoist, indoor parking, as well as staff areas with offices and conference space





Highway Maintenance Depot

This facility gathers various district needs under one roof:

- Salt storage
- Drive-through loading lane
- Offices, restroom, break room
- Chemical Shed

Similarly to the MassDOT Braintree Highway Maintenance Facility, this Depot is composed of wide-span prefabricated trusses, and offers cross ventilation and vast amounts of daylighting.

