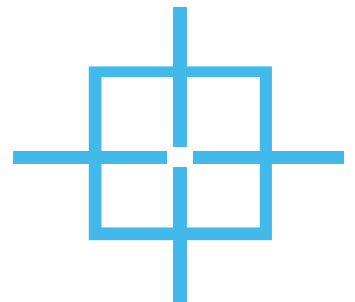


MEP/FP & Technology Engineering Qualifications for Transportation-Related Projects

June 21, 2022



Contact: Julius D. Davis, PE, LEED AP
VoltAir, Inc.
6005 Benjamin Road, Suite A
Tampa, FL 33634
jdavis@voltairinc.com / 1.888.891.9713



GENERAL OVERVIEW

VoltAir Consulting Engineers, Inc., founded by Julius Davis, PE, LEED, provides mechanical, electrical, plumbing, fire protection and information technology design services. Headquartered in Tampa, FL, VoltAir also maintains offices in Orlando, Ft. Lauderdale, Dallas, Houston, Atlanta and Nashville, and is a certified minority-owned corporation. Founded in 2006, our firm provides quality assurance from conceptual design through construction administration and project closeout. With buildings that range from schools to airports, our engineers and technical staff provide design services associated with renovations, additions, and new construction. Our project experience includes a wide variety of market sectors, including transportation, education, aviation, hospitality, public works, healthcare, multi-family, hospitality, commercial and industrial sectors.

Julius Davis
President & CEO



MULTIDISCIPLINARY SERVICES

For 16 years, we've offered our clients a coordinated multidisciplinary approach on projects. We constantly strive to provide the best services available to efficiently and reliably serve their needs. VoltAir brings a depth of knowledge, given our broad range of services, that comes to bear on our designs resulting in creative and highly functional solutions.

MECHANICAL:

- Heating, Ventilation, and Air Conditioning
- Central Chiller Plants
- Central Boiler Plants
- Commercial Kitchen Systems
- Direct Digital Controls
- Process Exhaust and Ventilation
- Indoor Air Quality
- Energy Modeling
- Geothermal HVAC

ELECTRICAL:

- Power Distribution
- UPS and Clean Power
- Emergency Power Generation
- Interior Lighting Design
- Site Lighting Layout
- Fire Detection System
- Security Systems and CCTV
- Smart House Control Systems
- Daylighting Controls
- Lighting & Technology Design
- Photovoltaics (Solar Electricity)

PLUMBING/

FIRE PROTECTION:

- Hot/Cold Water Distribution
- Waste and Vent Piping
- Process Piping
- DI Systems
- Fire Protection Systems
- Hot Water Generation
- Medical Gas Systems
- Solar Hot Water

INFORMATION TECHNOLOGY:

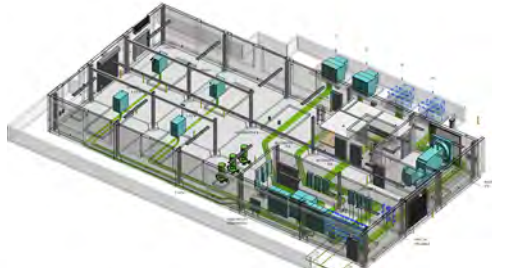
Integrated data networks and technology systems have created a revolution in building functions. VoltAir provides the leadership and experience necessary to design complex technology systems; carefully coordinated to meet the client's needs. Our experience ranges from simple structured cabling system designs to highly integrated and centralized security, audio / visual, and paging systems.

COMMISSIONING

When implemented early in the design process, quality-focused commissioning can save time and money while improving the health and productivity of a building. VoltAir's LEED Fundamental Commissioning has made significant contributions to building operations by discovering adjustments and other issues related to functional performance of the systems and the energy being consumed. Our Certified Commissioning Authorities (CxA's) are certified by the Associated Commissioning Group of the Associated Air Balance Council.

BIM CAPABILITIES:

We use Revit-based technology to develop parametrically coordinated projects that minimize costs, maximize efficiency and achieve program and quality objectives.



LEED™ CAPABILITIES:

VoltAir succeeds in implementing procedures and documents required during planning and design to obtain LEED Certification



A JOB WELL DONE

Our team has extensive experience working with Owners, Architects, and Contractors on public and private projects involving renovations, additions and new construction. Our extensive list of repeat clients and our history of successful projects testifies to the effectiveness of our service.

Alameda Theatre San Antonio
 City of Clearwater
 City of St Petersburg
 City of Tampa
 Dallas Area Rapid Transit
 Florida Dept. of Management Services
 Hillsborough County Aviation Authority
 Hillsborough Area Regional Transit Authority
 Hillsborough Community College
 Houston Airport System
 Houston Community College
 Houston Independent School District
 Kissimmee Airport Administration
 Lakeland Regional Airport
 Lockheed Martin
 Orlando International Airport
 Orange County Public Schools
 Pasco Hernando Community College
 Polk County Schools
 Southwest Airlines
 Southwest Florida International Airport
 Straz Performing Arts Center
 St. Petersburg / Clearwater Airport
 Tampa Housing Authority
 Tampa International Airport
 Tampa General Hospital
 Tampa Wastewater Dept.
 USF Health Byrd Alzheimer's Institute
 United Airlines
 University of Houston
 University of South Florida
 University of Tampa
 U.S. Department of Veterans Affairs





ADA and METRO Project Experience

For 16 years, we've offered our clients a coordinated, multidisciplinary approach on projects. We constantly strive to provide the best services available to efficiently and reliably serve their needs. We bring a depth of knowledge, given our broad range of services, that comes to bear on our designs and results in creative yet highly functional solutions. VoltAir performs ADA-related design work on every project, based on architectural direction. A representative few includes:

ADA Experience

Kenley Park ADA Restroom (Harvard Jolly)
Lockheed Martin Restroom renovation including ADA compliance (BRPH)
USF ADA Restroom Improvements (Ranon & Partners)
USF Andros ADA Toilets (Ranon & Partners)
DMS Trammel Building ADA Upgrades (Williamson Dakar)

METRO Project Experience

ATL-MARTA Canopy
Dallas Area Rapid Transit (Bradlink)
HART Bus Rapid Transit (Kimley-Horn)
HART Yukon Transfer Station (Fleischman Garcia)
HART Marion Transit Station Generator Addition (Kimley-Horn)

VoltAir also has considerable experience with Automated People movers associated with aviation projects such as at Tampa International Airport in Florida:

ConRAC and AUTOMATED PEOPLE MOVER

New multi-level ConRAC facility and new APM to connect the new ConRAC to the Main Terminal. The 1.3-mile APM will have three stations, Terminal APM Station, Economy Garages APM Station, and ConRAC APM Station / \$736 million / Jan. 2018

ConRAC & APM DBOM (DESIGN-BUILD-OPERATE- MAINTAIN) IMPLEMENTATION

Quality control and field inspections on specific scopes, related to the overall ConRAC and APM (Automated People Mover) project at Tampa International Airport. Scopes include: Guideway systems, North & South substations, M & SF (Maintenance and Storage Facility) substation, and public passenger stations / 2017

ConRAC & APM, LIGHT VEHICLE MAINTENANCE FACILITIES

Light Vehicle Maintenance/Rental Car Facilities sub-project incl.: MEP/F at four pre-fab facilities, each with roll-up doors, office space and vehicle maintenance capabilities for rental cars such as: car wash, oil change, tire maintenance, and fuel islands. Enterprise, Avis and Hertz will each occupy its own facility, and Facility #4 will be rented by multiple rental car companies / 2017

TRANSFER LEVEL EXPANSION & AIRSIDES CONCESSION REDEVELOPMENT (MTAC)

New expanded floor plates on the east and west sides of the existing Main Terminal including new adjoining outdoor spaces, relocation of the APM stations, new way-finding signage at ticket and baggage claim stations, seating improvements and Long-Term Parking Garage walkway vestibules / \$153 million / 2017

TRANSPORTATION SECTOR OVERVIEW

Founded in 2006, VoltAir Consulting Engineers, Inc. provides quality assurance from conceptual design through construction administration and project closeout for MEP/FP, commissioning and technology system engineering design services on projects associated with renovations, additions or new constructions of facilities that range from schools to airports. Headquartered in Tampa, Florida, VoltAir also maintains offices in Orlando, Ft. Lauderdale, Houston, Dallas, Nashville and Atlanta.

For nearly two decades, VoltAir has steadily developed strong relationships with clients in the aviation and transportation sector and to date, we have successfully delivered more than 200 projects in these combined vertical markets. VoltAir's experience includes the ITT Subway Replacement project at George Bush Intercontinental Airport (IAH) which includes renovation of the existing "Shuttle Cars" that are located

underneath the existing terminal complex. The trams will be removed, and a new "Shuttle Car" system will be installed in its place.

Previously, VoltAir worked for the Dallas Area Rapid Transit System to provide electrical engineering services for low-voltage routing of communication systems for more than 40 rail stations and rail platforms throughout the Dallas metropolitan area. Additionally, VoltAir has been trusted to work on a number of the projects detailed in the Hillsborough Area Regional Transit Authority 10-Year Transit Development Plan, which has contributed to the growth of the County's transit system footprint. VoltAir understands well the quality expectations, the specific design guidelines and most importantly, the demands of the transit industry's 24/7 operations.

Our biggest transportation related projects include:

Tampa International Airport, **Consolidated Rental Car Facility (ConRAC) and Automated People Mover (APM)**, \$735 million total and 2.5 million-SF | Tampa International Airport, **ConRAC APM DBOM (Design-Build-Operate-Maintain) Implementation**, \$200 million and 1.4 miles | Tampa International Airport, **Monorail System Decommissioning and Moving Walkway Installation**, \$33.5 million | George Bush Intercontinental Airport, **ITT Subway Replacement**, \$30 million | Hillsborough Area Regional Transit, **Heavy Maintenance Facility**, \$32 million total and 70,000-SF.



Tampa International Airport (TPA), ConRAC and APM
Tampa, FL



TPA, ConRAC APM DBOM Implementation
Tampa, FL



IAH ITT Subway Replacement
Replace "Shuttle Cars"
Houston, TX



Dallas Area Rapid Transit
Communications Routing
Dallas, TX



TPA Monorail System Decommissioning
Installation of walkways
Tampa, FL



HART Bus Shelters
Signage, lighting, and BRT signal at 50 stops
Tampa, FL



HART Marion Transit Station
Standby Generator
Tampa, FL

Owner
Hillsborough County
Aviation Authority

Train Designer
Lea & Elliott, Inc.

Delivery Method
Design-Build

Completion Date
Jan. 2018

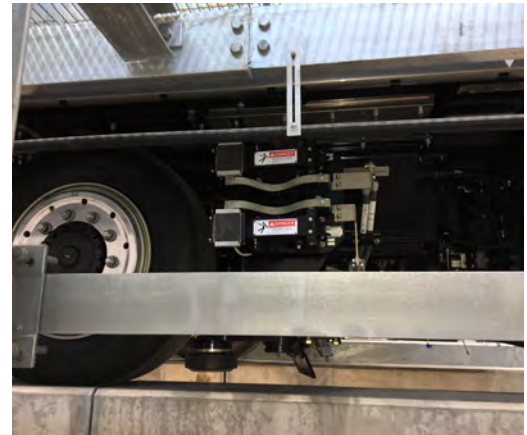
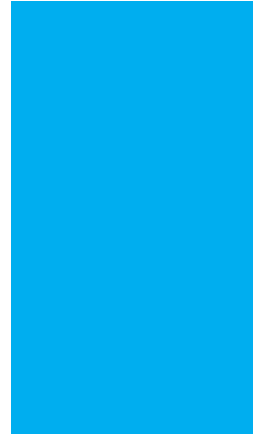
Construction Cost
Approx. \$200 million

Size
N/A

LEED Certification
N/A

VoltAir Staff
Julius Davis
Roland Young
Danny Celis
Rob Shorey
Bill McGuirk

Other Consultants
Mitsubishi



TIA, ConRAC APM / DBOM (Design-Build-Operate-Maintain) Implementation

Tampa, FL

Project Description

Quality control and field inspections on specific scopes, related to the overall ConRAC and APM (Automated People Mover) project at Tampa International Airport.

Scopes include:

1. Guideway systems - tracks, conduits, DC power systems, control system, and lightning/grounding systems
2. Mechanical systems at the North & South substations
3. Maintenance and Storage Facility substation - including business areas, wash stations, control rooms, etc.
4. Three public passenger stations

VoltAir's Role on the project

Electrical, Mechanical, Plumbing and Fire Protection services

Owner
Hillsborough County
Aviation Authority

Architect
Gresham Smith &
Partners (Prime)
Demattei Wong
Architects (ConRAC only)

Delivery Method
Design-Build

Completion Date
January 2018

Construction Cost
\$736M (ConRAC & APM)
\$200 M (DBOM)

Size
2,452,082-SF

LEED Certification
N/A

Reference
Paul Ridgeway
Director of Maintenance
Tampa International
Airport
P.O. Box 22287
Tampa, FL 33622
Ph: 813.870.8744
pridgeway@
TampaAirport.com

Volt Air Staff
Julius Davis
Roland Young
Bill McGuirk
Danny Celis
Rob Shorey
Aaron Joseph

Other Consultants
Austin (Primary GC)
Beck (Local GC)
TLC Engineers (MEP)
Walter P. Moore
(Structural)
Gresham Smith
(Structural)
Master Consulting Eng.
(Structural)
KCA (Civil)
Aurora Eng.



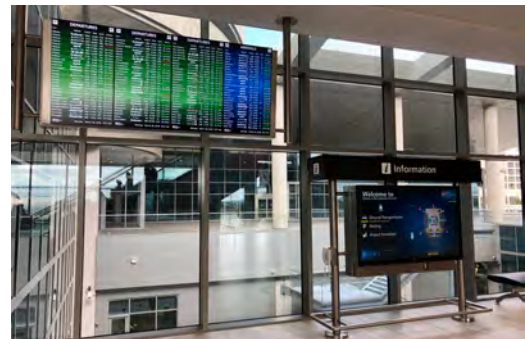
Consolidated Rental Car Facility (ConRAC) and Automated People Mover (APM)

Tampa, FL

Project Description

New multi-level ConRAC facility south of the economy parking garages and a new APM to connect the new ConRAC to the Main Terminal. The 1.4 mile APM will have three stations, Terminal APM Station, Economy Garages APM Station, and The ConRAC APM Station. The APM will be utilized by rental car customers, economy parking customers, airport employees and customers who are dropped off or picked up at the new curbside located at the ConRAC APM station. The new curbside will also accommodate a facility drop off point for local bus rapid transit and other public commercial transportation vehicles. APM \$421,662,873 / ConRAC \$314,793,897

The project also includes four service center sites, which accommodate services to rental cars such as: repairs, maintenance and storage.



VoltAir's Role on the project

Mechanical, Electrical, Fire Protection, Plumbing and Information Technology Design

Owner
HART (Hillsborough
Transit Authority)

Architect
Wannemacher Jenson
Architects

Delivery Method
Design-Bid-Build

Completion Date
2013

Construction Cost
\$3,000,000

Size
17,000-SF Renov.
15,000-SF Expansion

LEED Certification
N/A

VoltAir Staff
Julius Davis
Bryan Zemina

Other Consultants
N/A



HART Admin. and Operations Building Renovation & Expansion Tampa, FL

Project Description

Renovation and expansion of an existing 17,000-SF public transportation facility and expanding an additional 15,000-SF to accommodate and improve the agency's radio and dispatch operations, information and technology department, general administration, lounge area, and men's and women's shower/locker rooms. The entire facility is provided with an on-site 450kW emergency power generation backup system. M/E/P/FP

Owner
HART (Hillsborough Area
Regional Transit)

Client
Kimley-Horn
Associates Inc.

Delivery Method
Design-Bid-Build

Completion Date
2012

Construction Cost
Not known

Size
Approx. (50) shelters

LEED Certification
N/A

VoltAir Staff
Julius Davis

Other Consultants
N/A



HART Bus Rapid Transit (BRT) Bus Shelters Tampa, FL

Project Description

Electrical design services of fifty (50) bus shelters along City of Tampa North-South Corridor passing through major roadway intersections. The shelters consist of signage, totems, lighting, and BRT signal and communication equipment. / Electrical Engineering

Owner
HART (Hillsborough Area
Regional Transit)

Client
Kimley-Horn and
Associates

Delivery Method
Design-Bid-Build

Completion Date
2013

Construction Cost
Not known

Size
3,745-SF (existing
center)

LEED Certification
None

VoltAir Staff
Bill McGuirk
Julius Davis

Other Consultants
N/A



HART Marion Transit Station (MTS) Standby Generator Tampa, FL

Project Description

Capacitation of the two-story Marion Transit Station (MTS) facility, to operate during extended periods of power interruption from TECO (Tampa Electric Co.). VoltAir provided complete design and construction documents for the installation of a new optional Standby Generator. In addition, parking lot upgrades (designed by others) were designed to be connected to the standby generator. Coordination with the current design was a part of the overall generator power capacity and requirements.

Owner
HART (Hillsborough Area
Regional Transit)

Client
Genesis Engineering

Delivery Method
Design-Bid-Build

Completion Date
2012

Construction Cost
Not known

Size
Approx. 4,000-SF

LEED Certification
N/A

VoltAir Staff
Julius Davis

Other Consultants
N/A



HART Bus Maintenance Building Tampa, FL

Project Description

Provide lighting design for new exterior bus wash station. Size of the station is approximately 4,000-SF. Electrical Engineering

Owner
HART (Hillsborough Area
Regional Transit)

Architect
Fleischman Garcia
Architects

Delivery Method
Design-Bid-Build

Completion Date
2012

Construction Cost
Not known

Size
N/A

LEED Certification
N/A

VoltAir Staff
Julius Davis
Bryan Zemina

Other Consultants
N/A



HART Yukon Transfer Station

Tampa, FL

Project Description

Scope included renovations of an existing transfer station. Mechanical engineering services consisted of new HVAC equipment as needed including load calculations, plans, schedules and technical specifications. Plumbing systems design consisted of new sanitary and potable water connections to plumbing fixtures and equipment as needed. Electrical engineering services consisted of the design of lighting systems and power systems for the existing facility as well as modifications to the existing parking lot lighting including load calculations, plans, schedules and technical specifications.

VoltAir's Role on the project

Electrical, Mechanical, Plumbing and Fire Protection Engineering services



Tampa . Orlando . Ft. Lauderdale . Dallas / Ft. Worth . Houston . Nashville . Atlanta
www.VoltAirInc.com 1.888.891.9713